

PRAIRIE DUNE SERIES

SINGLE-SECTION

PRAIRIE DUNE SERIES

SINGLE-SECTION

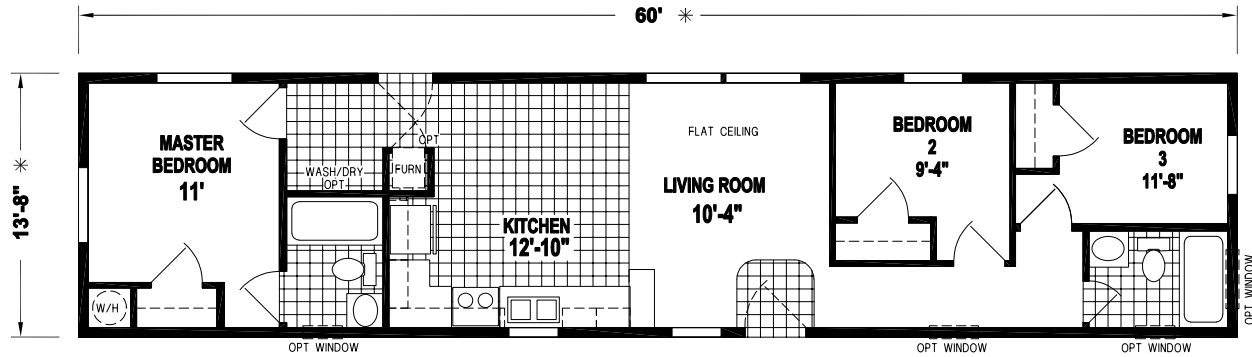
Inspired touches make the Prairie Dune Series by Skyline Homes anything but ordinary. Skyline offers three and four bedroom models, each with two baths. Whether you opt for the base floor plan or the optional den and laundry room, you're sure to find a comfortable place to call home.

Manufactured in Arkansas City, Kansas and backed by over 65 years of manufacturing experience, a 12-month warranty and stellar customer service — take a look for yourself to see why the Prairie Dune Series is the right decision for you and your family.



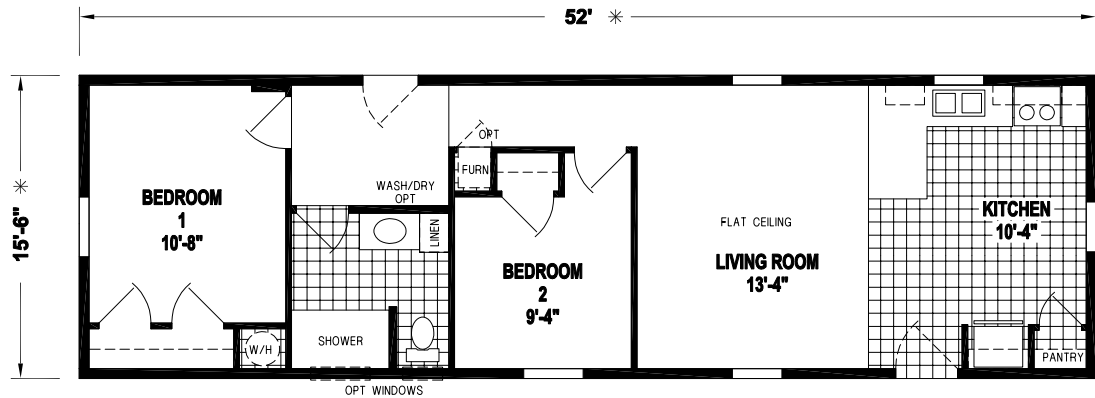
PRAIRIE DUNE
8307F

3 BED-2 BATH
820 SQ.FT.



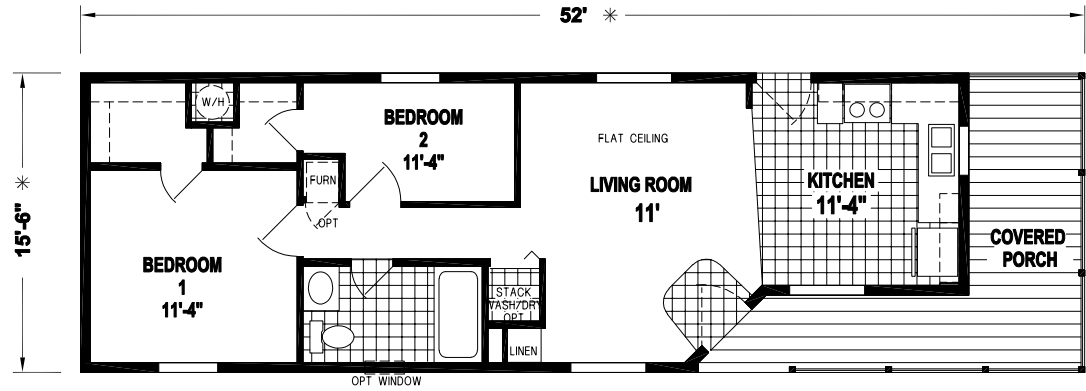
PRAIRIE DUNE
8720E

2 BED-1 BATH
806 SQ.FT.



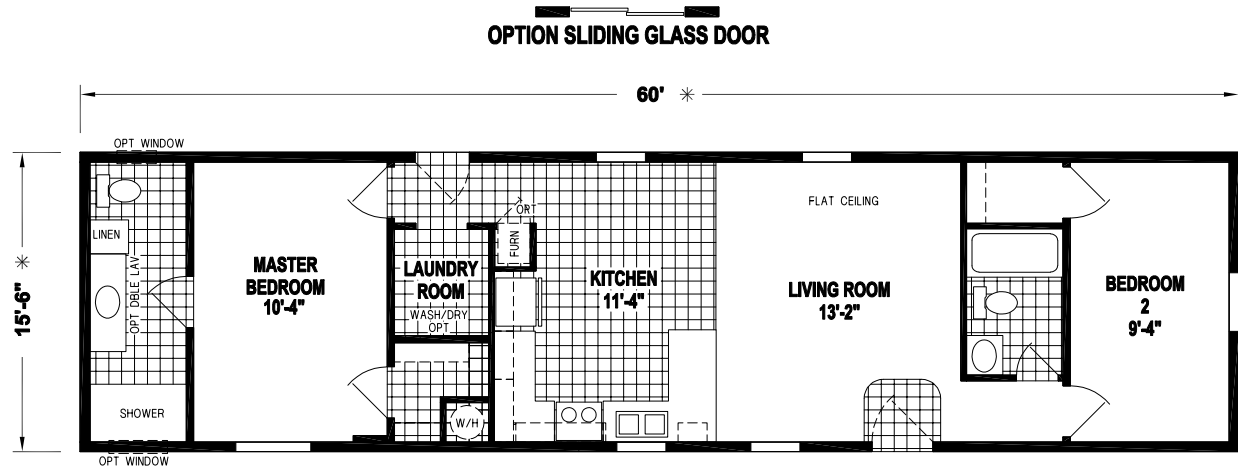
PRAIRIE DUNE
8769E

2 BED-1 BATH
806 SQ.FT.



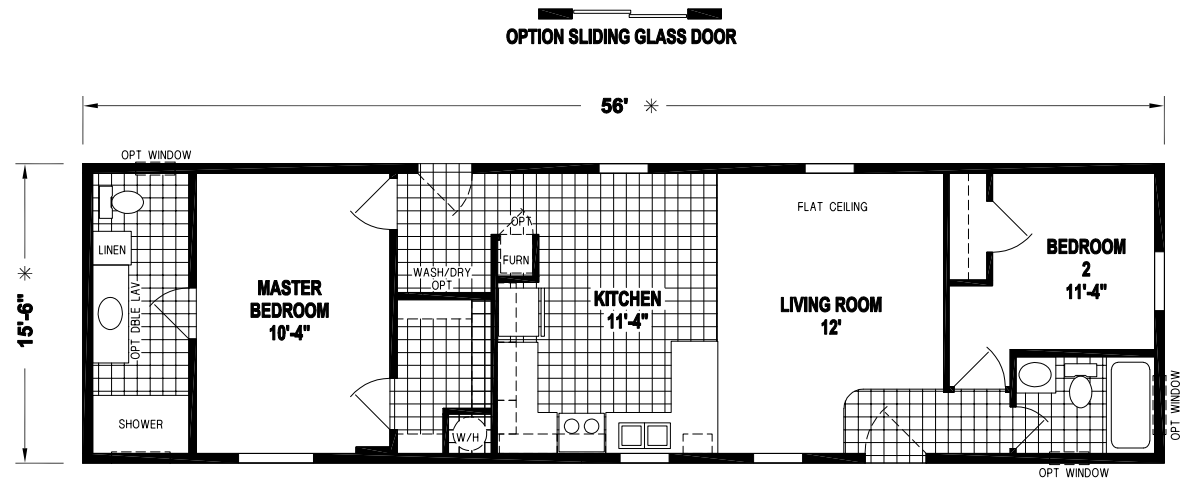
PRAIRIE DUNE
8732E

2 BED-2 BATH
930 SQ.FT.

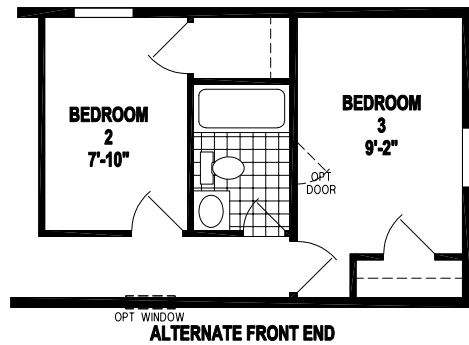
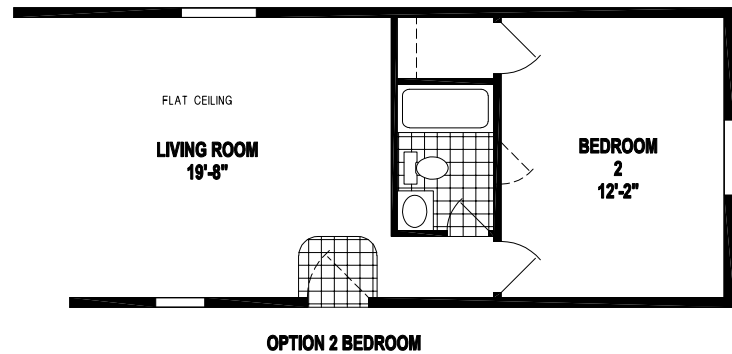
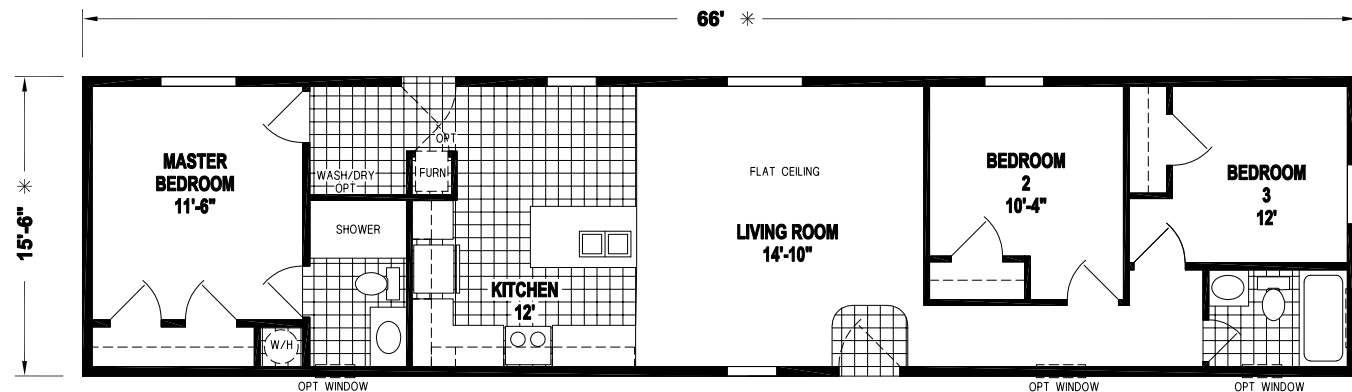


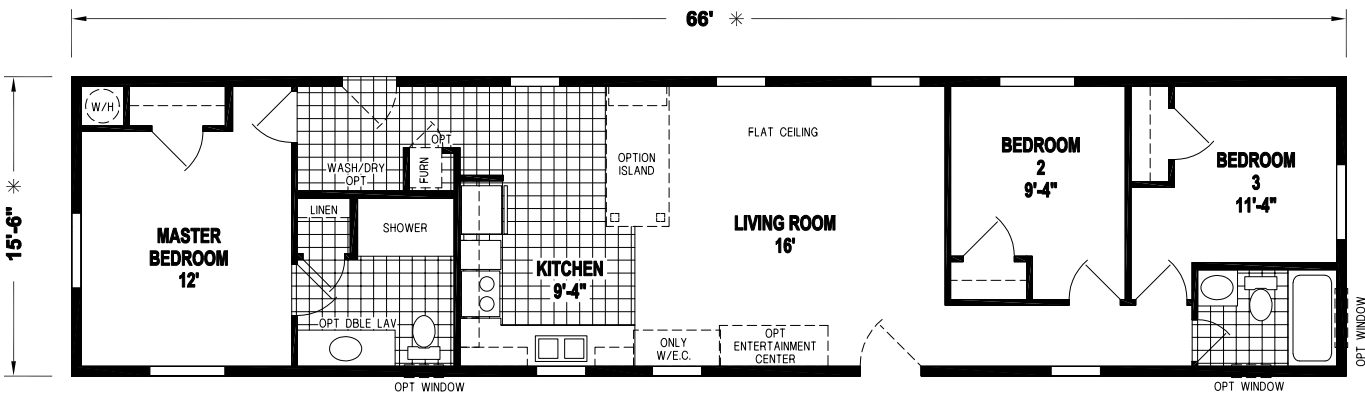
PRAIRIE DUNE
8719 E

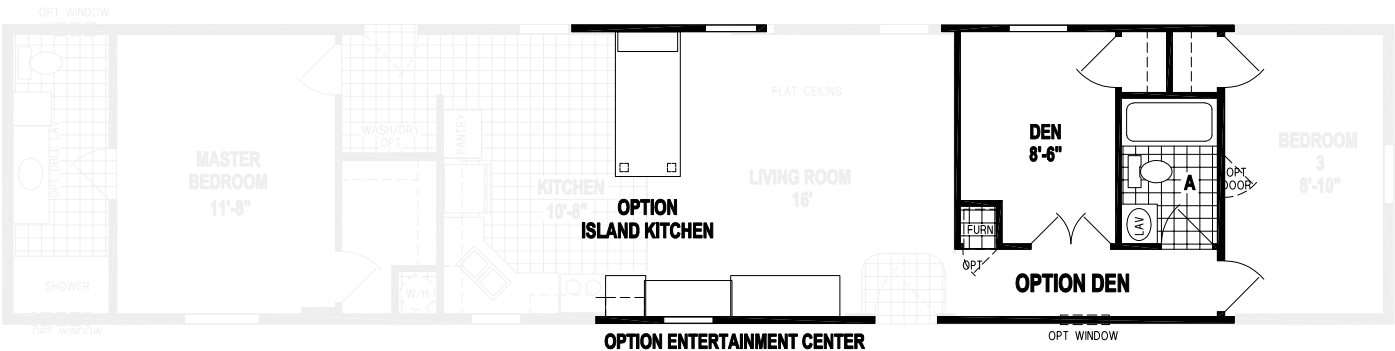
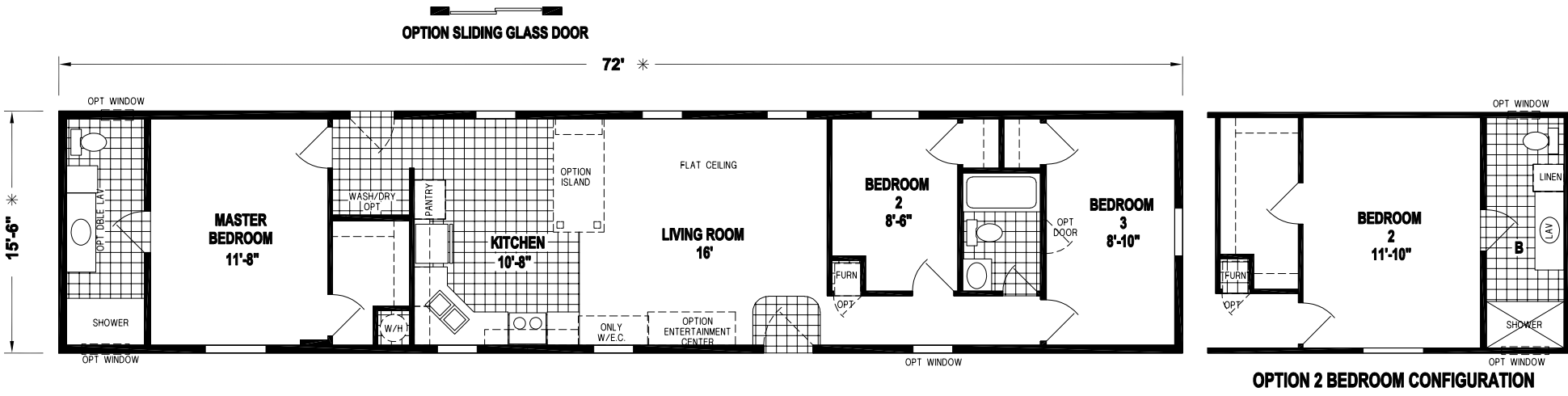
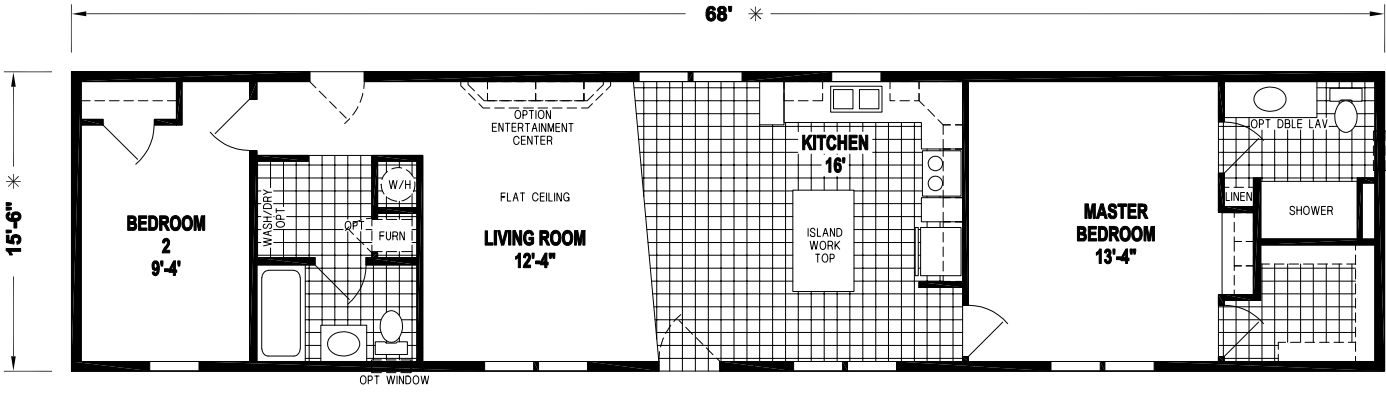
2 BED-2 BATH
868 SQ.FT.



PRAIRIE DUNE
8 7 2 5 E
3 BED-2 BATH
1023 SQ.FT.



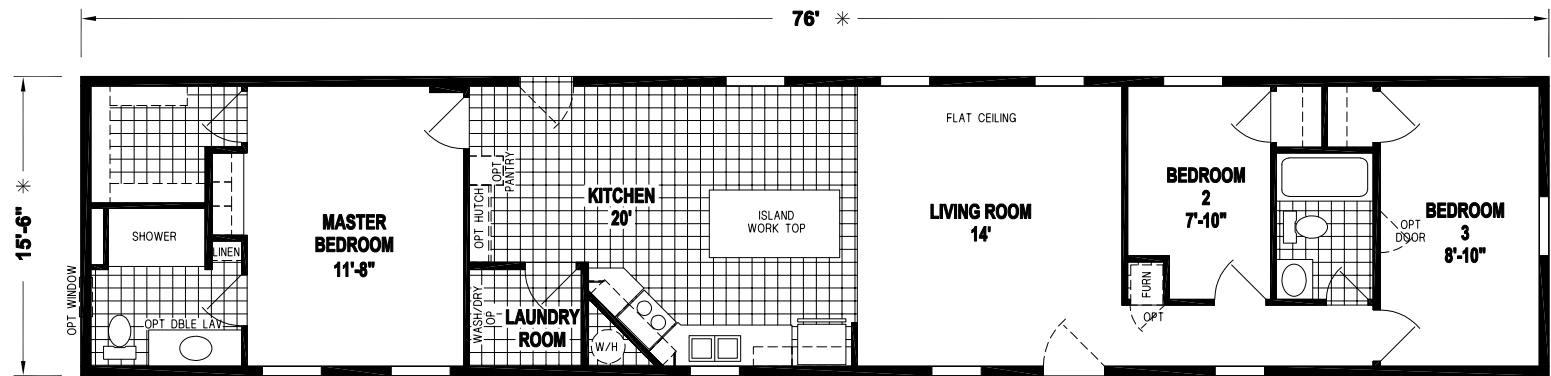




PRAIRIE DUNE
8726E
3 BED-2 BATH
1178 SQ.FT.



Shown with Optional Exterior

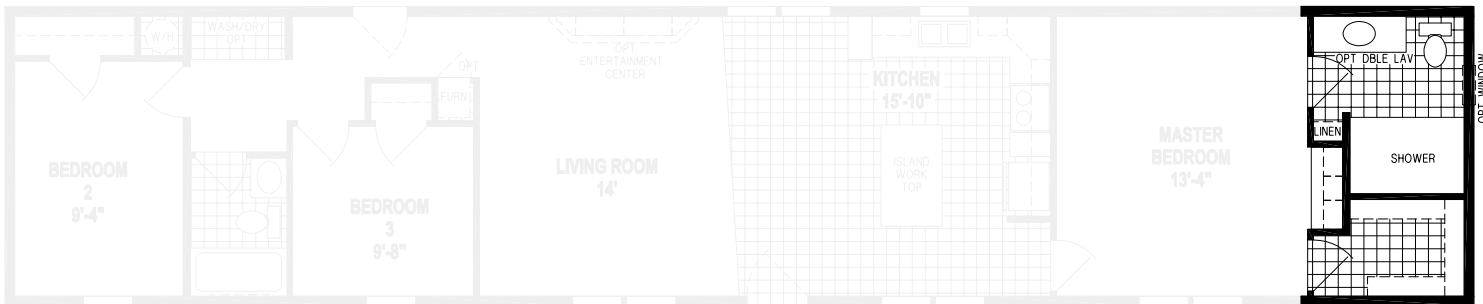
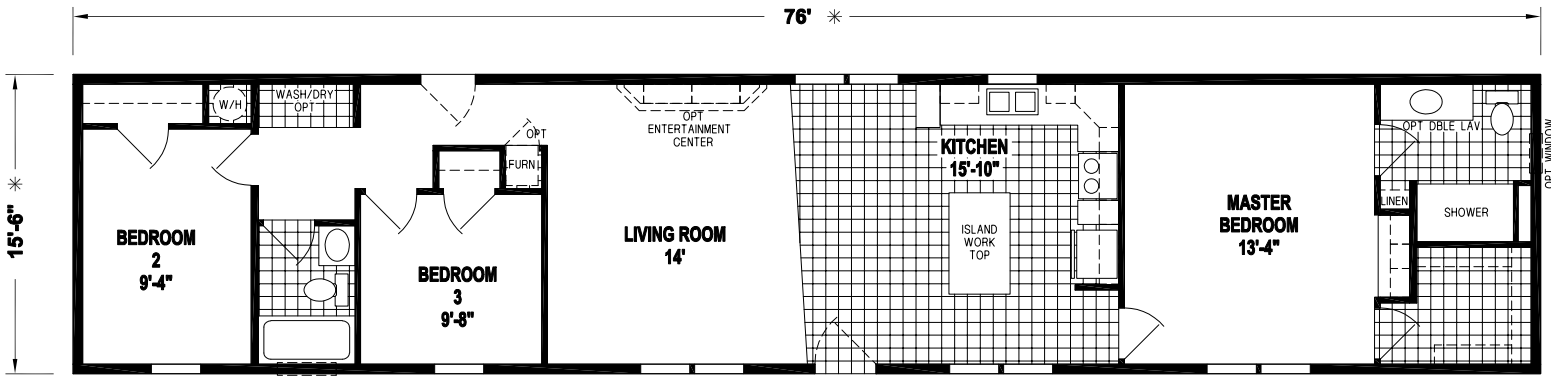


OPTION 4X6 SHOWER

OPTION DEN

PRAIRIE DUNE
8788E

3 BED-2 BATH
1178 SQ.FT.



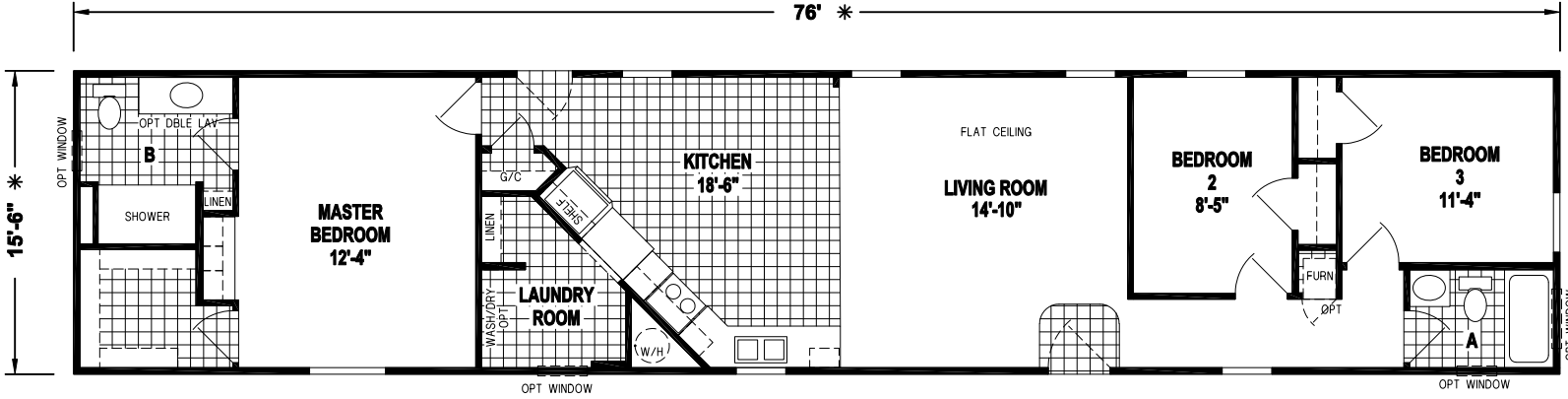
OPTION
WALK-IN SHOWER BATH

PRAIRIE DUNE
8785 E

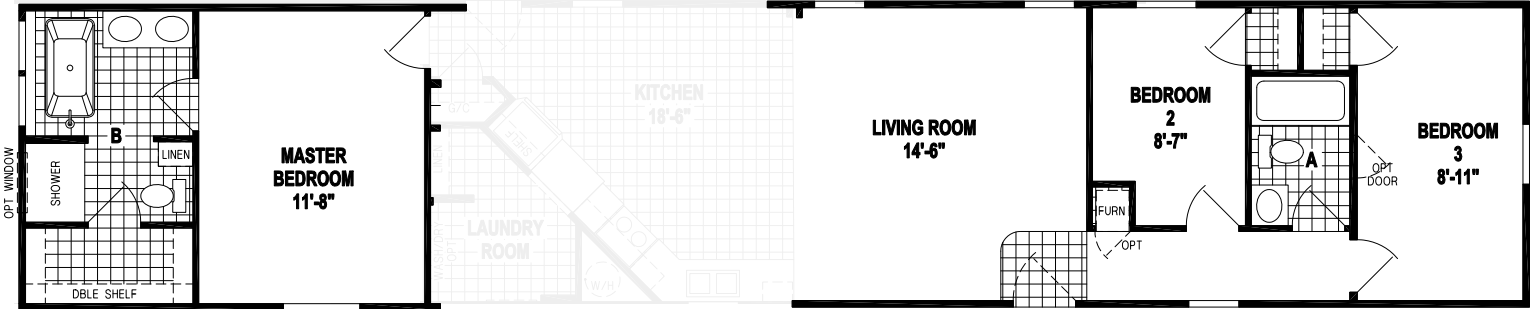
3 BED-2 BATH
1178 SQ.FT.



Shown with Optional Exterior



OPTION SLIDING GLASS DOOR



OPTION MASTER BATH

ALTERNATE FRONT BEDROOM/HALL BATH

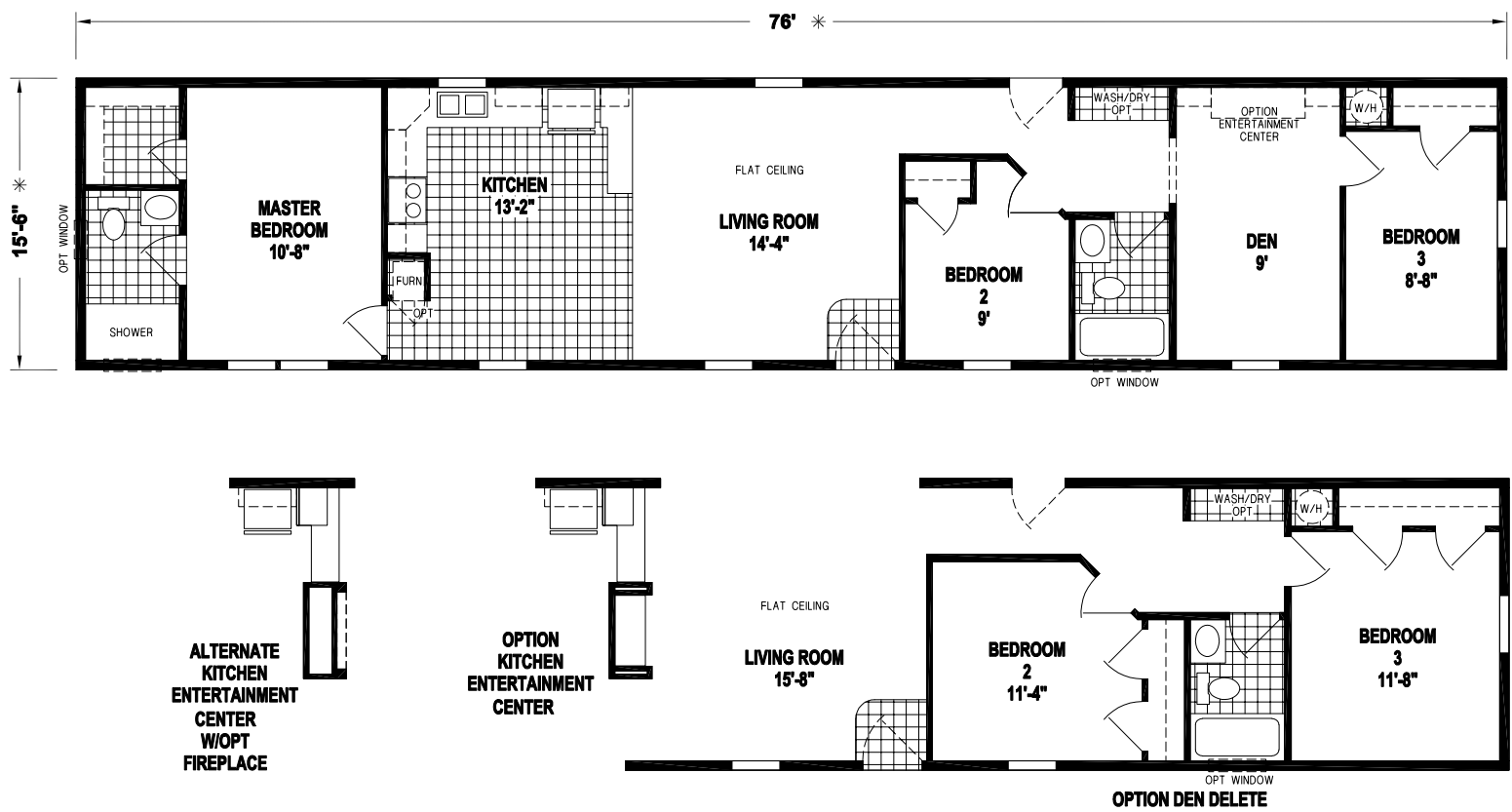


OPTION 4X6 SHOWER BATH

OPTION KITCHEN ISLAND

OPTION ENTERTAINMENT CENTER





CONSTRUCTION

- 8’ Sidewall Height
- Flat Ceilings Throughout
- 2x4 Exterior Walls
- 2x3 Interior Walls
- 3/12 Roof Pitch
- 30# Roof Load
- 2x6 Joists on 14’ Wide
- 2x8 Joists on 16’ Wide
- Detachable Hitch
- Thermal Zone II
- Insulation R 19-11-11

EXTERIOR

- Vinyl Siding with House Wrap
- OSB Sheathing on Sides and Ends
- 25-Year Roof, 3-Tab Shingles
- 36” 4-Light Fiberglass Front Door
- 32” 6-Panel Fiberglass Rear Door
- Single-Hung Low-E Windows

HEATING/UTILITY

- Electric Furnace
- Inline Metal Heat Ducts
- 40-Gallon Electric Water Heater
- Plumb for Washer
- Wire for Dryer
- Wire Shelving above Washer and Dryer

PLUMBING/ELECTRICAL

- 200 AMP Service
- LED Throughout (Except Pendants and Ceiling Fans)
- Exterior GFCI Receptacle
- Whole House Water Shut-Off
- Water Shut-Offs All Fixtures
- DWV and Water Supply Plumbed into Drop (s)

INTERIOR

- Linoleum Entry
- Shaw® Live Wire Carpet
- 1/2 Rebond Carpet Pad
- Tack Strip and Carpet Bar
- Mini Blinds
- Vinyl on Gypsum
- 1 1/2 ” Crown Molding (19X)
- 1 1/2” Base (6M)
- 1 1/2” Casing (6M)
- Lip Molding with Wrapped Luan Jambs on Exterior Doors and Windows (10H)

KITCHEN

- CS90 Cabinet Construction
- Flat Panel Cabinet Doors
- Hardwood Cabinet Styles
- Roller Drawer Guides
- Single 3” Stacked Style Cabinet Molding
- Shelf in Base Cabinet
- Self-Edge HPL Countertop
- 4” Laminate Backsplash
- 8” Double Bowl Sink - Stainless Steel
- Single-Lever Kitchen Faucet

APPLIANCES

- 18 Cu. Ft. Refrigerator
- 30” Black Electric Range
- Lighted Range Hood

BATHROOM(S)

- Flat Panel Cabinet Doors
- Hardwood Cabinet Styles
- 1-Piece Fiberglass Tub/Showers
- Self-Edge HPL Countertop
- China Lavatory Bowls
- Dual Handle Lavatory Faucets
- Elongated China Commodes
- Power Vent Fan with Light

Due to continuous product development and improvement, prices, specifications, and materials are subject to change without notice or obligation. Square footage and other dimensions are approximate. Exterior images may be artist renderings and are not intended to be an accurate representation of the home. Renderings, photos and floor plans may be shown with optional features or third-party additions.



Arkansas City, KS