

**SKYLINE**®

Arkansas City, Kansas



*Signature* MODULAR



## *Signature* MODULAR

The Signature Modular Home Series has been professionally designed to meet the needs of families through high-end craftsmanship with trend-setting design. The homes are as functional as they are beautiful. Manufactured in the Heartland at our Arkansas City, Kansas facility, backed by over 65 years of experience building homes, and stellar customer service – take a look for yourself to see why the Signature Modular Series by Skyline Homes is the right decision for you and your family.



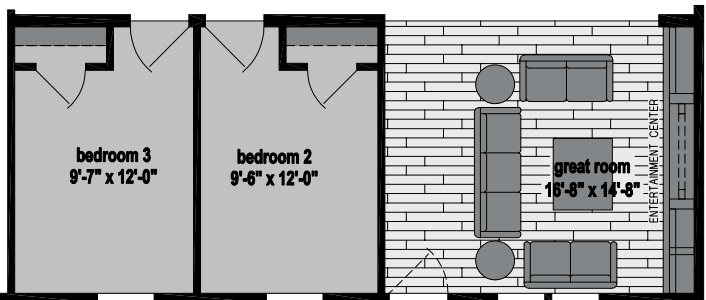
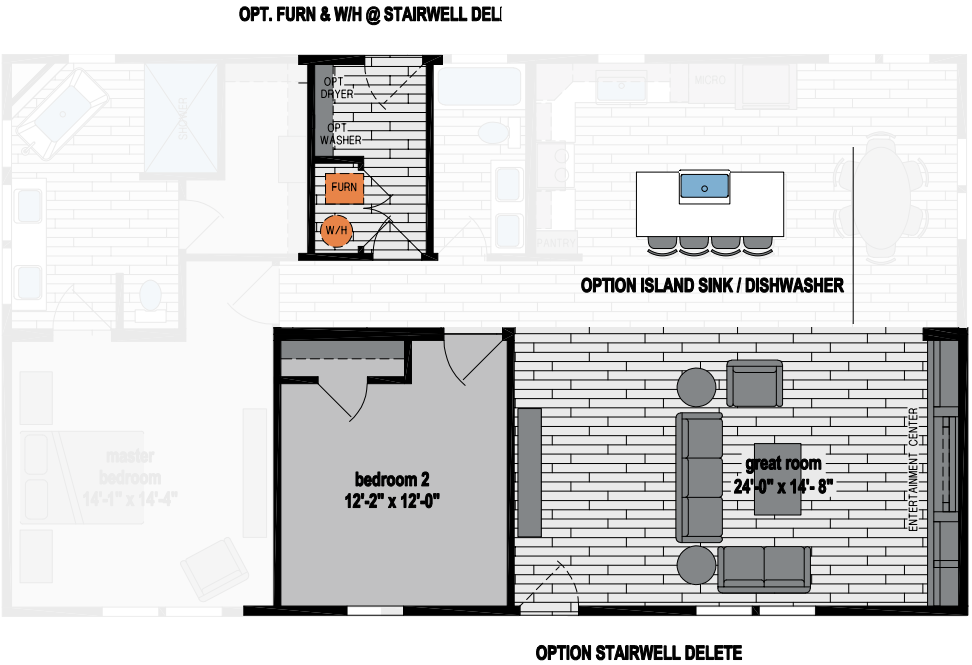
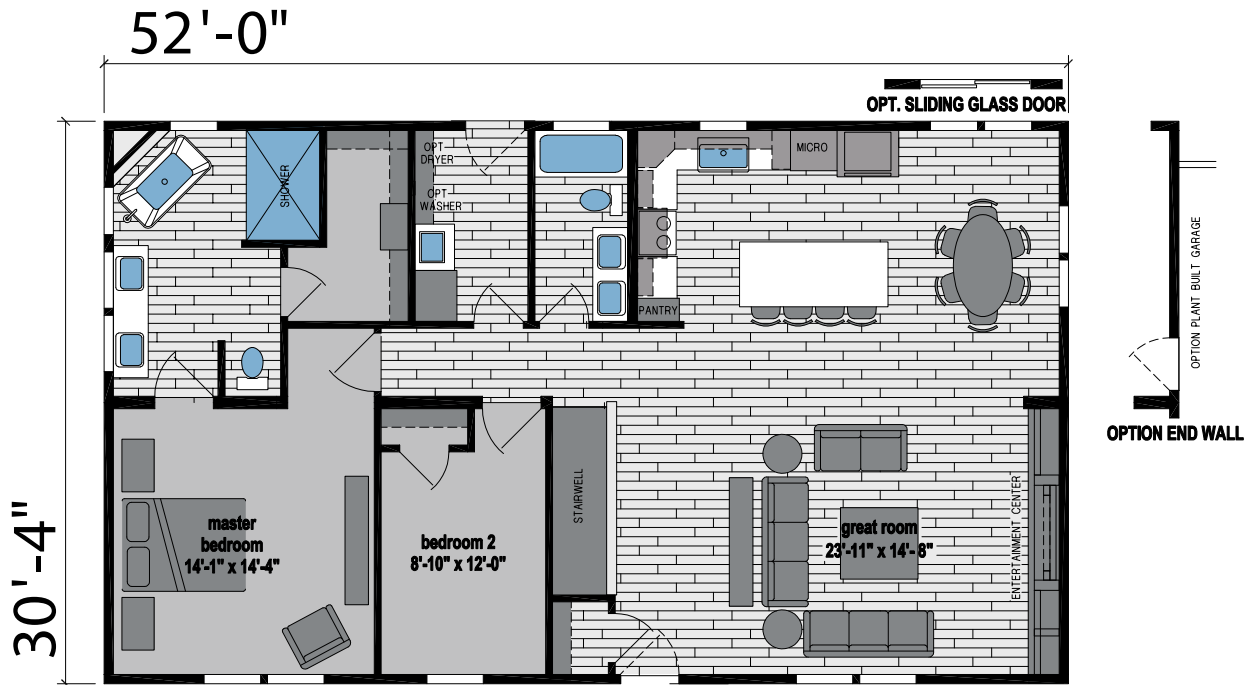




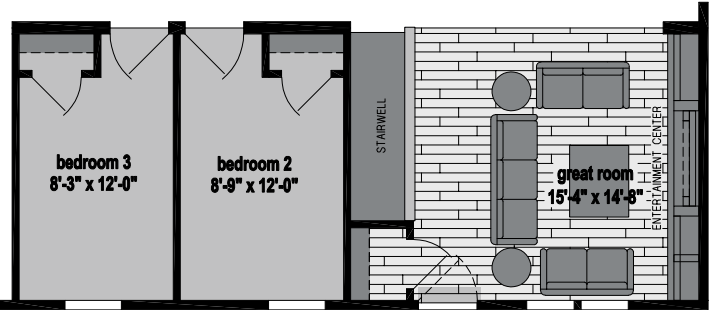
Shown with Optional Exterior

*Signature*  
D925MP

2 BED-2 BATH  
1577 SQ. FT.



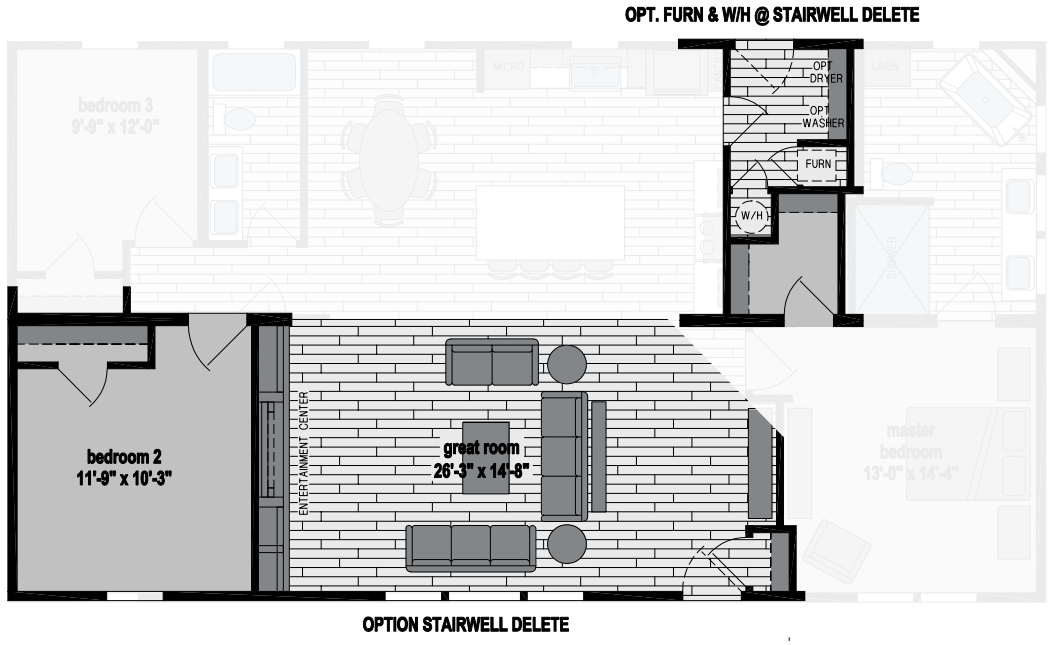
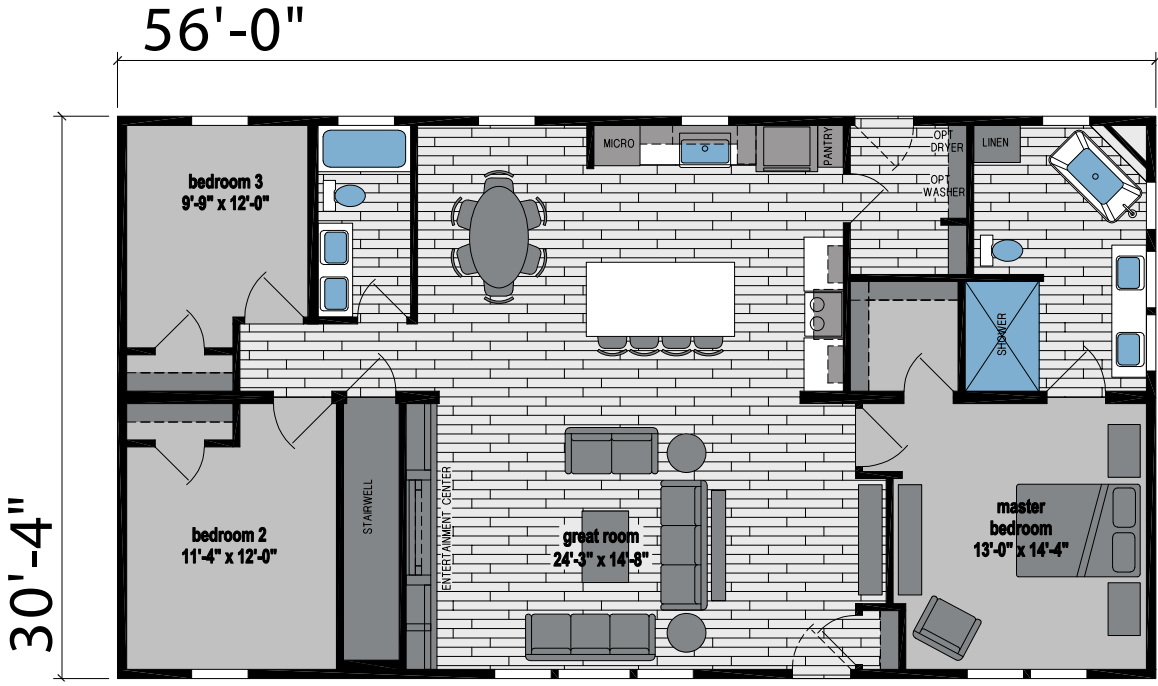
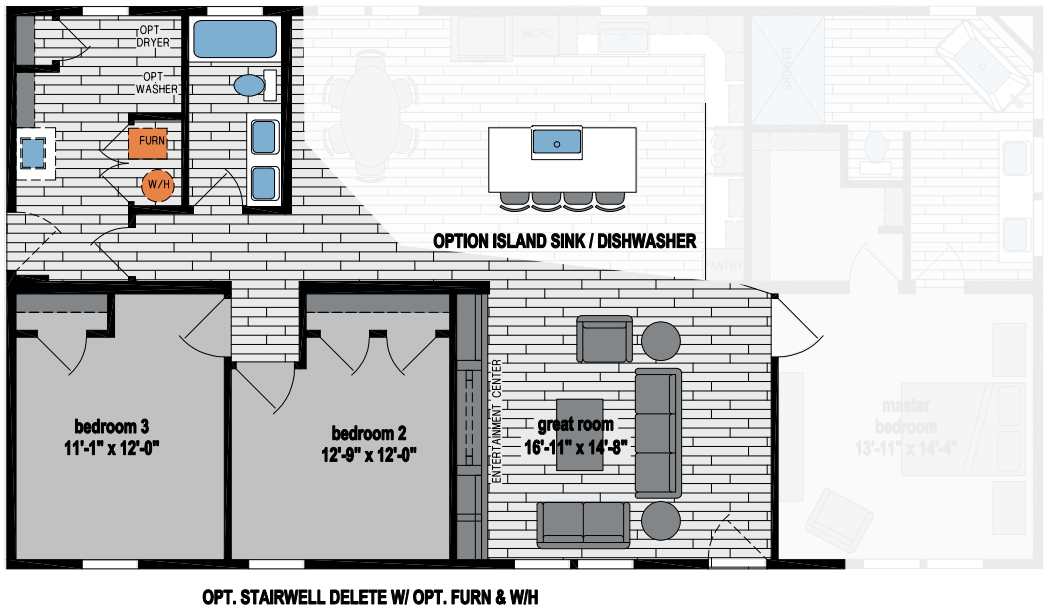
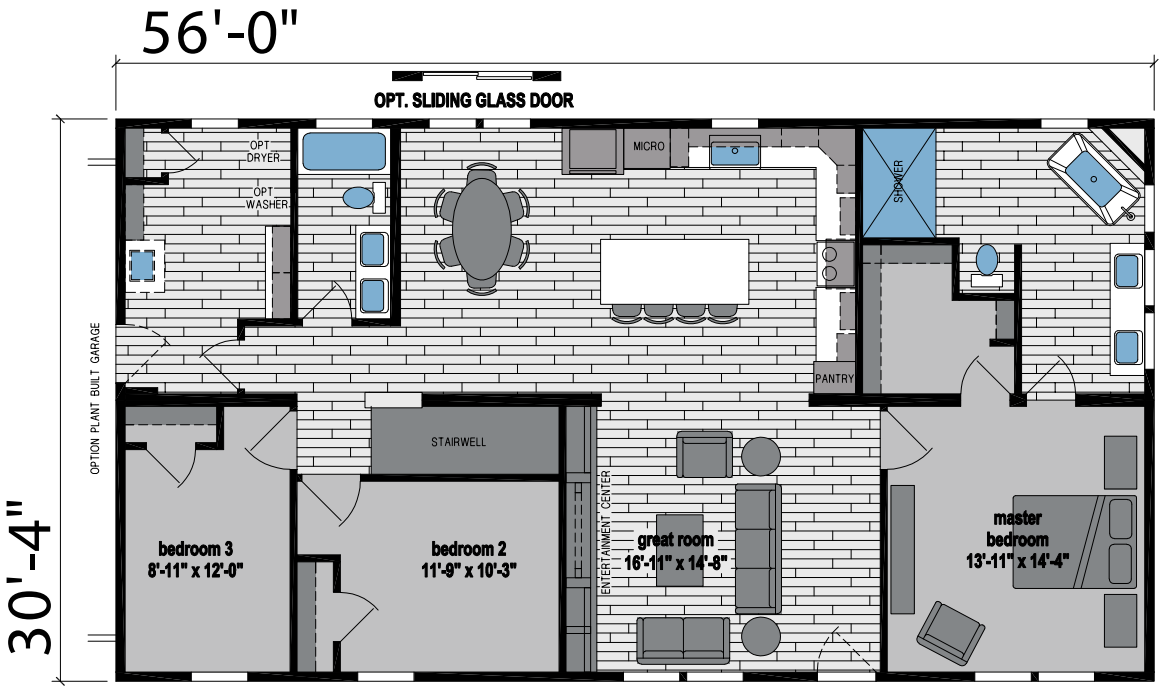
OPTION STAIRWELL DELETE AT 3BERDOOM OPTION



3BERDOOM OPTION

Signature  
D930MA

3 BED-2 BATH  
1698 SQ. FT.



Signature  
D932MA

3 BED-2 BATH  
1698 SQ. FT.

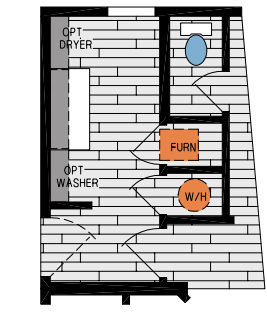


Signature  
D931MA

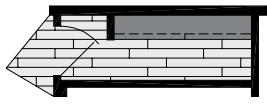
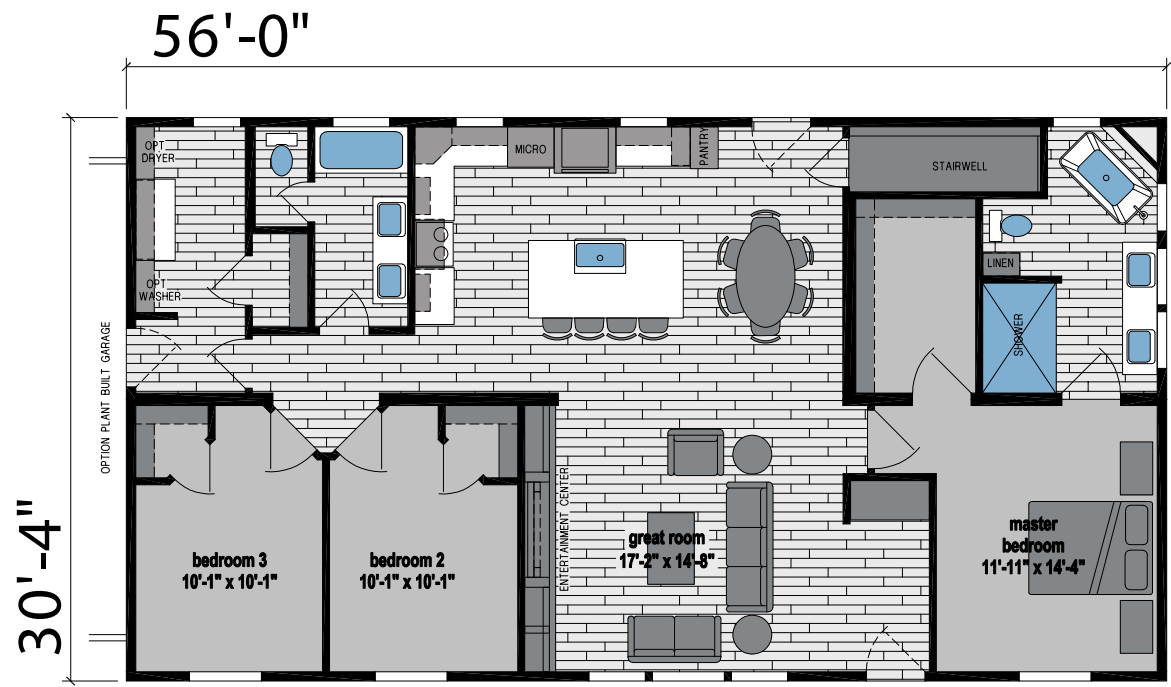
3 BED-2 BATH  
1698 SQ. FT.



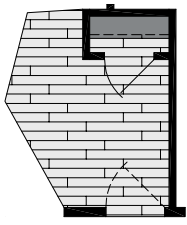
Shown with Optional Exterior



OPT. FURN & W/D @ STAIRWELL DELETE



PANTRY @ STAIRWELL DELETE



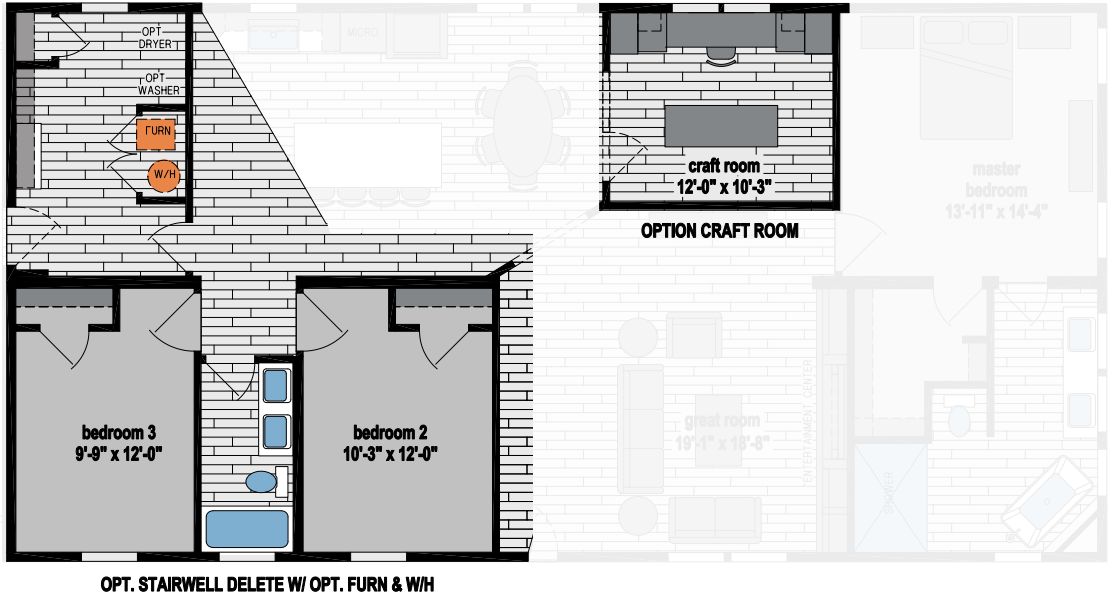
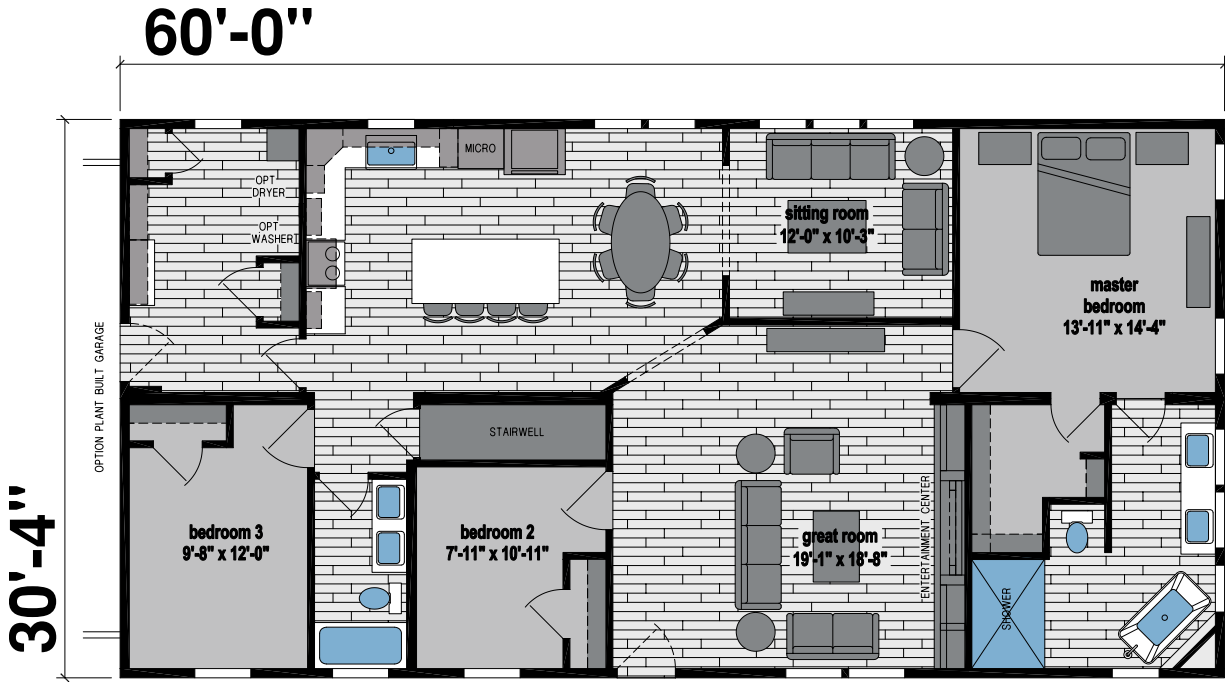
OPTION GUEST CLOSET



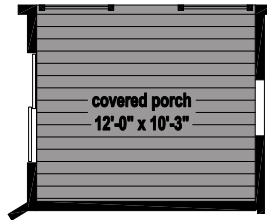


Signature  
D945MA

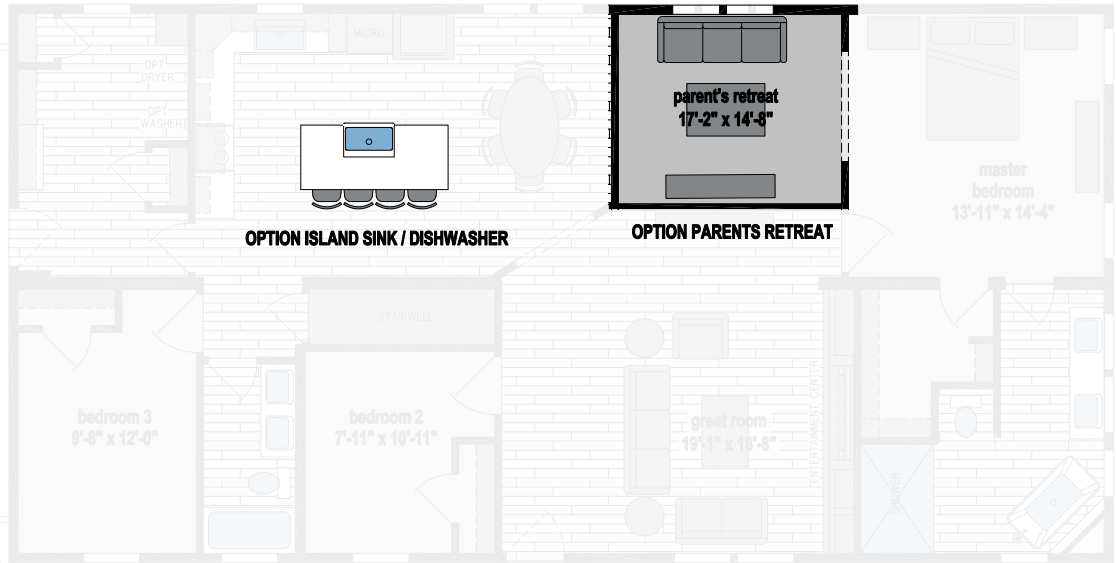
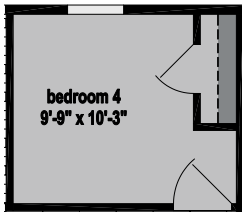
3 BED-2 BATH  
1820 SQ. FT.

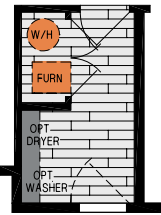
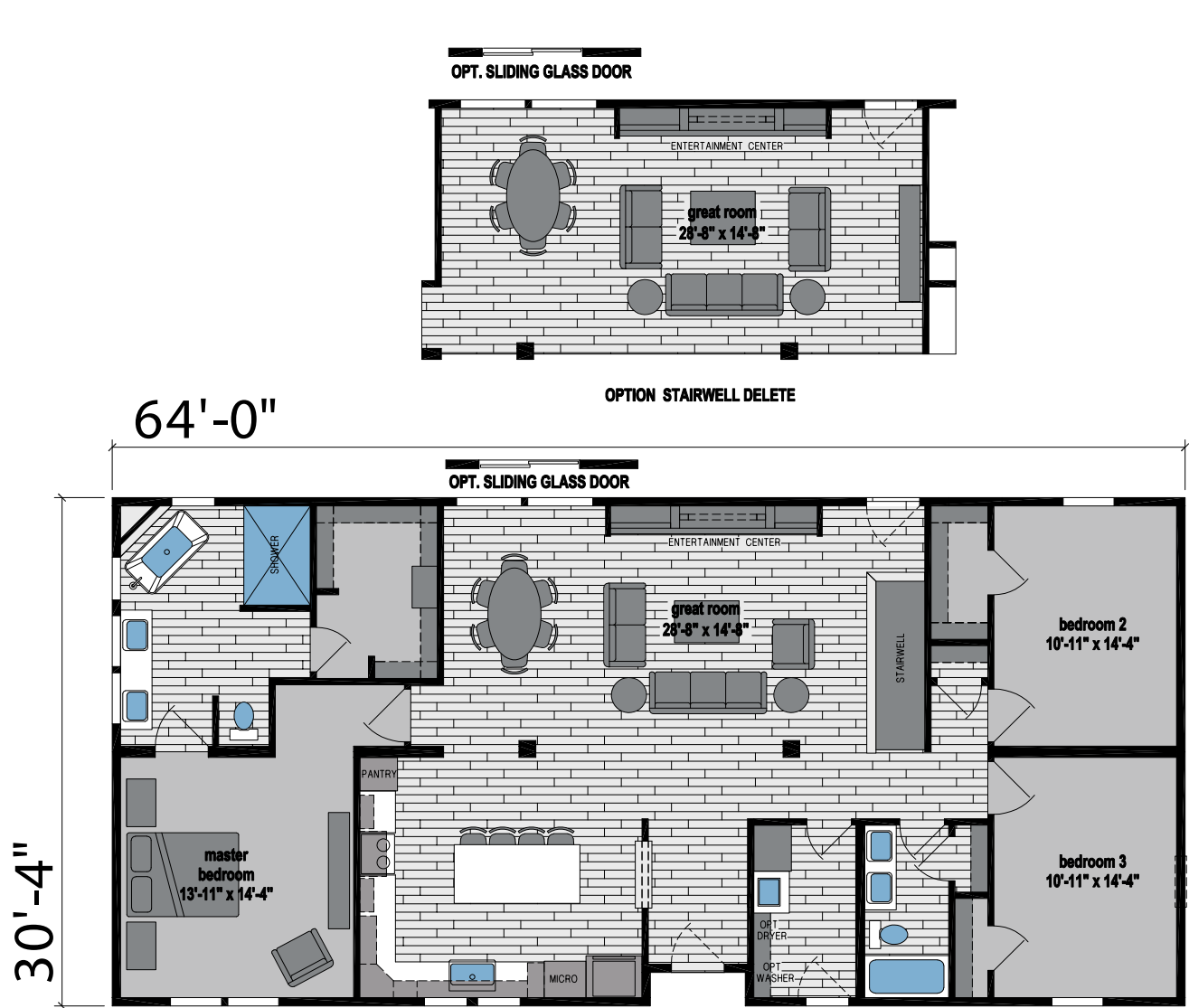


OPTION COVERED PORCH

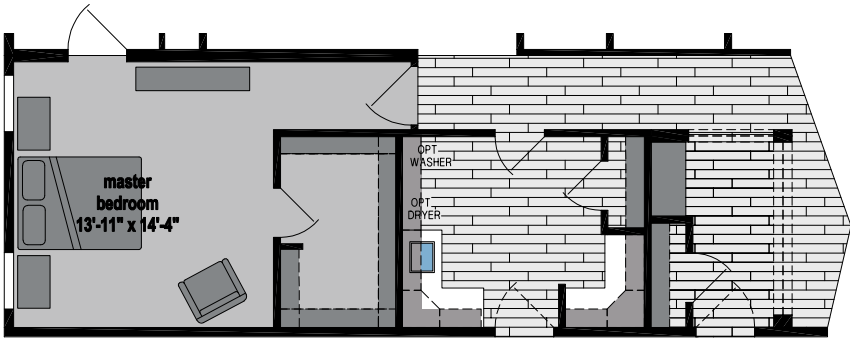
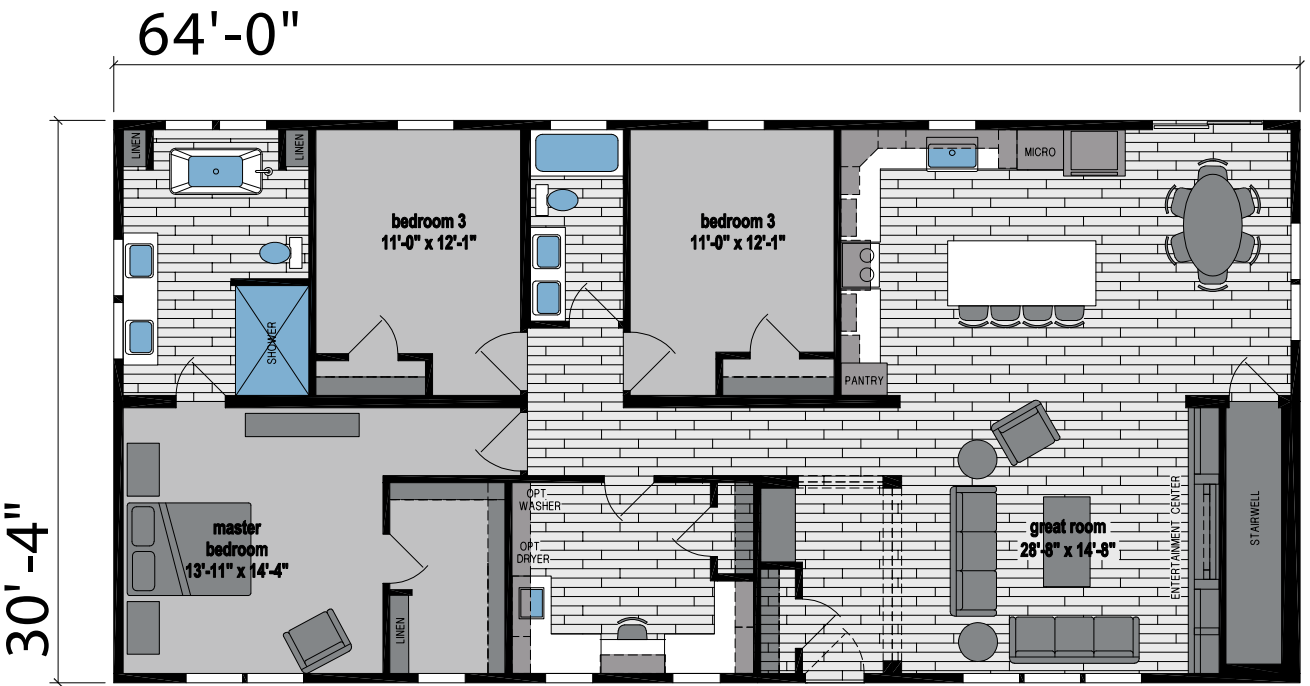


OPTION 4TH BEDROOM

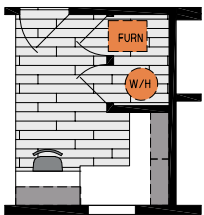




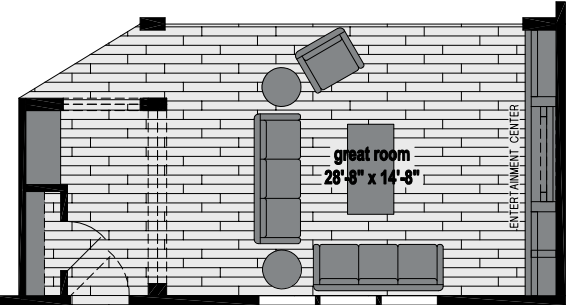
OPT. FURN & W/H @ STAIRWELL DELETE



OPTION DOOR SIDE ENTRY UTILITY



OPT. FURN & W/H @ STAIRWELL DELETE

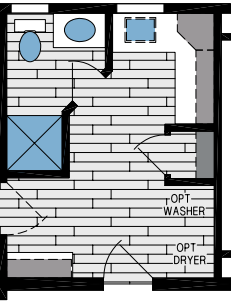


OPTION STAIRWELL DELETE

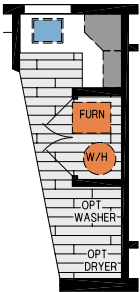




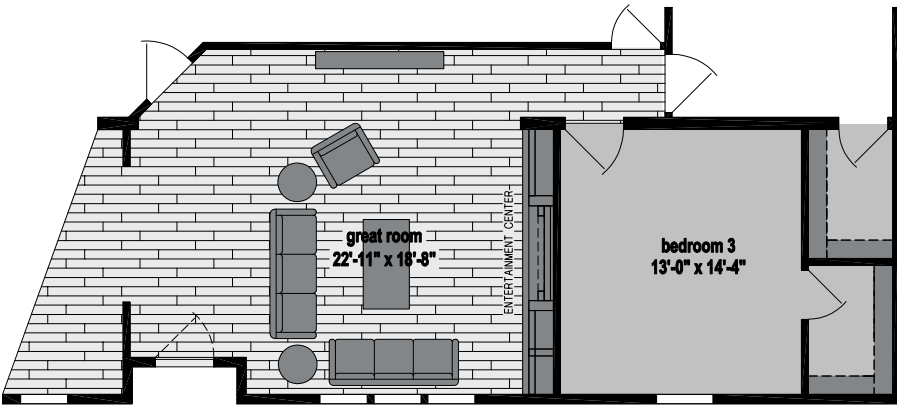
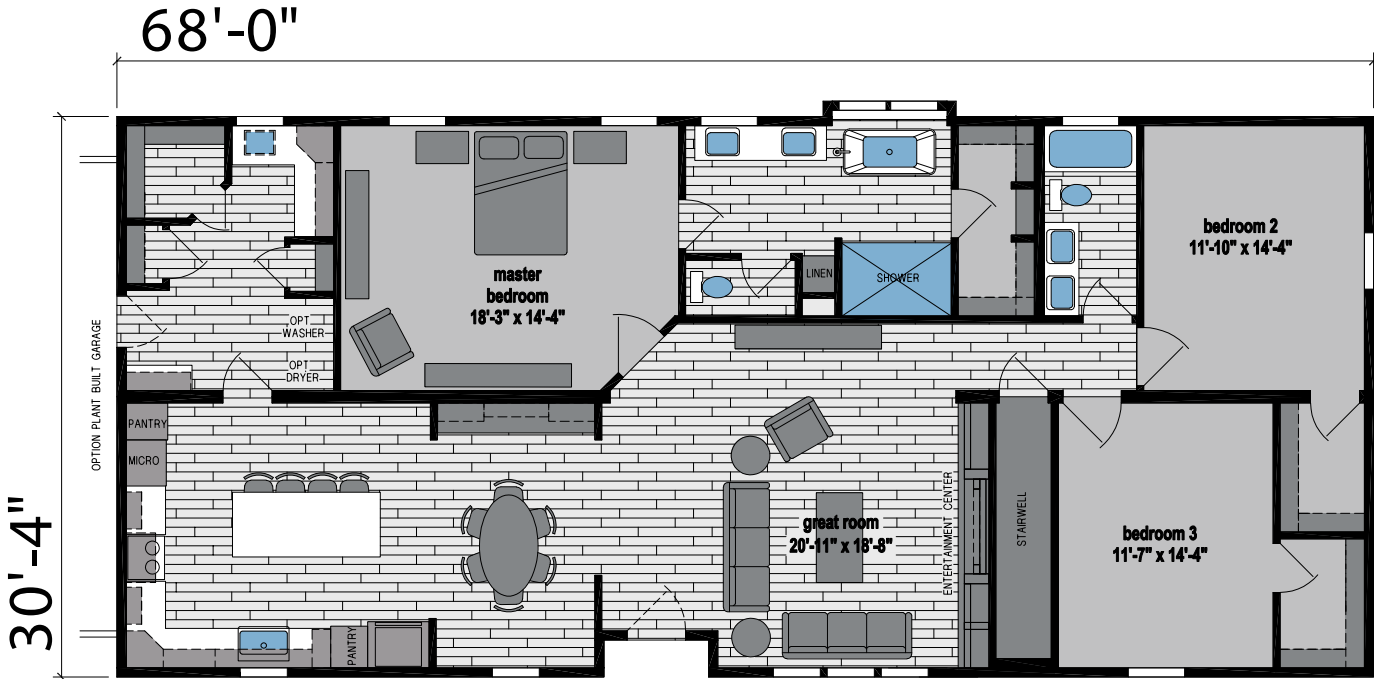
Shown with Optional Exterior



OPT. 3/4 BATH

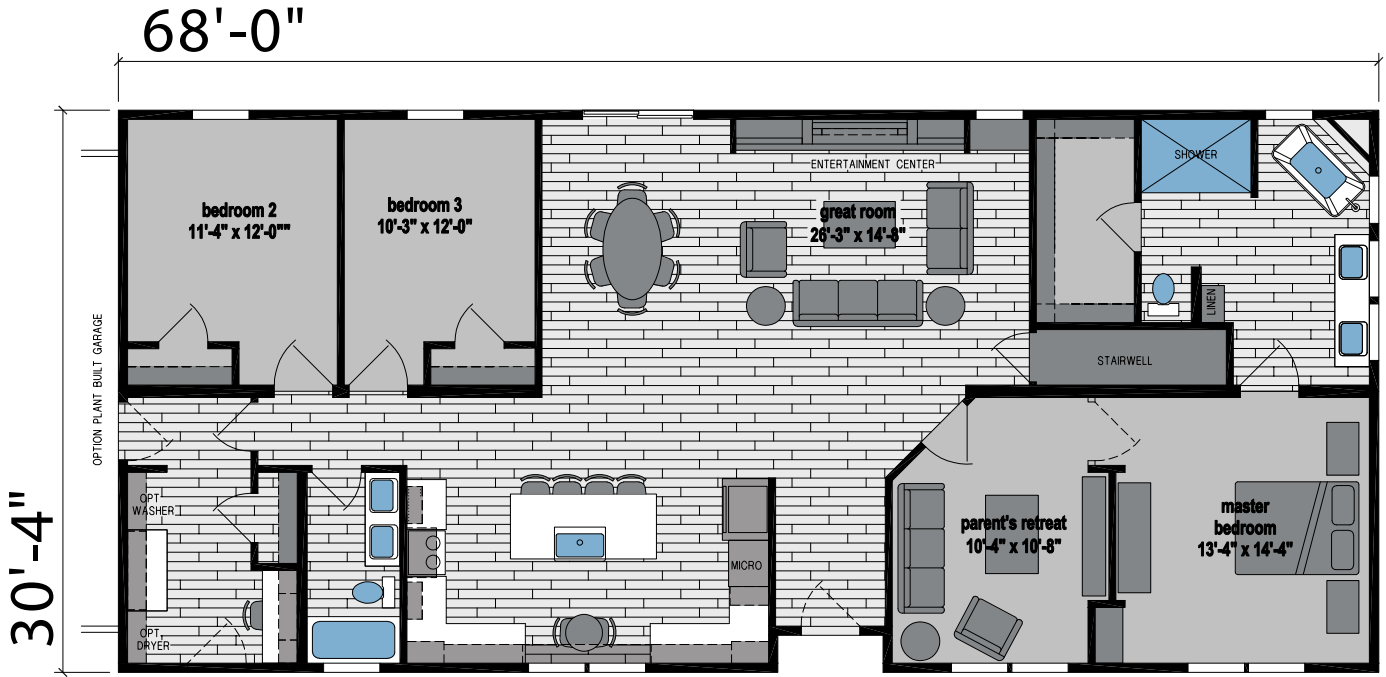


OPT. FURN & W/H @ STAIRWELL DELETE



OPTION STAIRWELL DELETE





OPT. FURN & W/H @ STAIRWELL DELETE

OPTION KITCHEN



# Signature MODULAR

## STANDARD FEATURES

### CONSTRUCTION

- 9' Sidewall Height
- Continuous Plywood Marriage Line Beam
- Flat Ceilings Throughout
- 2x6 Exterior Walls
- 2x4 Interior Walls
- 5/12 Roof Pitch
- 40 lb Roof Load
- 2x10 Floor Joists with Hangers and Double Perimeter
- R-38 Roof Insulation, R-19 Sidewall Insulation

### EXTERIOR

- Hardboard Siding, OSB Underlayment and House Wrap
- 5/4" Window Trim All Sides
- OSB Sheathing on Sides and Ends
- 30-Year Roof Architectural
- 36" 4-Light Fiberglass Front Door
- 36" Blank Fiberglass Rear Door
- Single-Hung Low-E Windows
- 26' Dormer with 8' Eyebrow Dormer Above Door with Board and Batt Siding Accent

### INTERIOR

- Luxury Vinyl Tile Throughout Except Bedroom(s)
- Shaw® "Macramé Carpet in Bedroom(s)
- 1/2" Rebond Carpet Pad
- Tack Strip and Carpet Bar
- 1/2" Kiri Wood Blinds
- Tape and Texture Throughout with Bullnose Corners
- Taped Ceiling Joint
- 5 1/4" Base
- 3-Panel 36" Interior Doors Per Design
- 3 1/4" Door Casing
- 3 1/4" Casing on Windows and Exterior Doors with 5/8" Wrapped Style Jambs
- Painted Accent Wall in Master Bedroom
- MC-256-C Entertainment Center – Per Floor Plan
- 50" Electric Fireplace – Per Floor Plan
- Wood Closet Shelf and Rod System

### HEATING/UTILITY

- WiFi Thermostat with 30' of 10 Wires Coiled in Floor
- Plumb for Washer
- Wire for Dryer
- Cabinets Above Washer and Dryer

### PLUMBING/ELECTRICAL

- 200 AMP Service
- 12-2 Wiring Throughout
- LED Throughout (Except Pendants and Ceiling Fans)
- Arc Fault Interrupter at All Bedrooms
- (2) Exterior GFCI Receptacles
- Ceiling Fan in Living Room, Master Bedroom and Family Room
- Whole House Water Shut-Off
- Water Shut-Offs All Fixtures
- (2) Exterior Hose Bibs
- Drain and Water Lines Stubbed Through Floor

### KITCHEN

- CS106-NK Cabinet Construction
- Flat Panel Cabinet Doors
- Hardwood Cabinet Styles
- Soft-Close Door/Drawer Hinges/Guides
- Drawer Over Door Construction
- Drawer Bank – Per Floor Plan
- Stacked Style Trim on Overhead Cabinets
- Roll-Out Shelves in Base Cabinet
- Crescent Edge HPL Countertop
- 18" High Mincey Marble® Backsplash
- Stainless Steel Apron Sink
- Hi-Arc Industrial Kitchen Faucet
- Granite Island Countertop

### APPLIANCES/AUDIO VISUAL

- 21 Cu. Ft. Stainless Steel Refrigerator
- 30" Slide-in Stainless Steel Range with Front Controls
- 30" Glass Canopy Range Hood with Stainless Steel Chimney
- Dishwasher with Sensor Cycle
- 24" LED TV in Kitchen

### BATH FEATURES

- Flat Panel Cabinet Doors
- Hardwood Cabinet Styles
- Drawer Bank – Per Floor Plan
- Tile Wall Shower with 8" Rainfall Showerhead and/or Fiberglass Tub/Shower
- Sliding Glass Barn Shower Door – Per Floor Plan
- Crescent Edge HPL Countertop
- Square China Lavatory Bowls
- Contemporary Dual-Handle Faucets
- Comfort Height, Elongated China Commodes
- Power Vent Fan With Light
- Framed Decorative Mirror(s)
- Freestanding China Tub – Master Bathroom Per Floor Plan
- (2) Rows of Tile Backsplash Over Lavatory

Due to continuous product development and improvement, prices, specifications, and materials are subject to change without notice or obligation. Square footage and other dimensions are approximate. Exterior images may be artist renderings and are not intended to be an accurate representation of the home. Renderings, photos and floor plans may be shown with optional features or third-party additions.

7 YEAR LIMITED  
WARRANTY

Member:







Arkansas City, KS