

# Craftsman SERIES



Silvercrest®





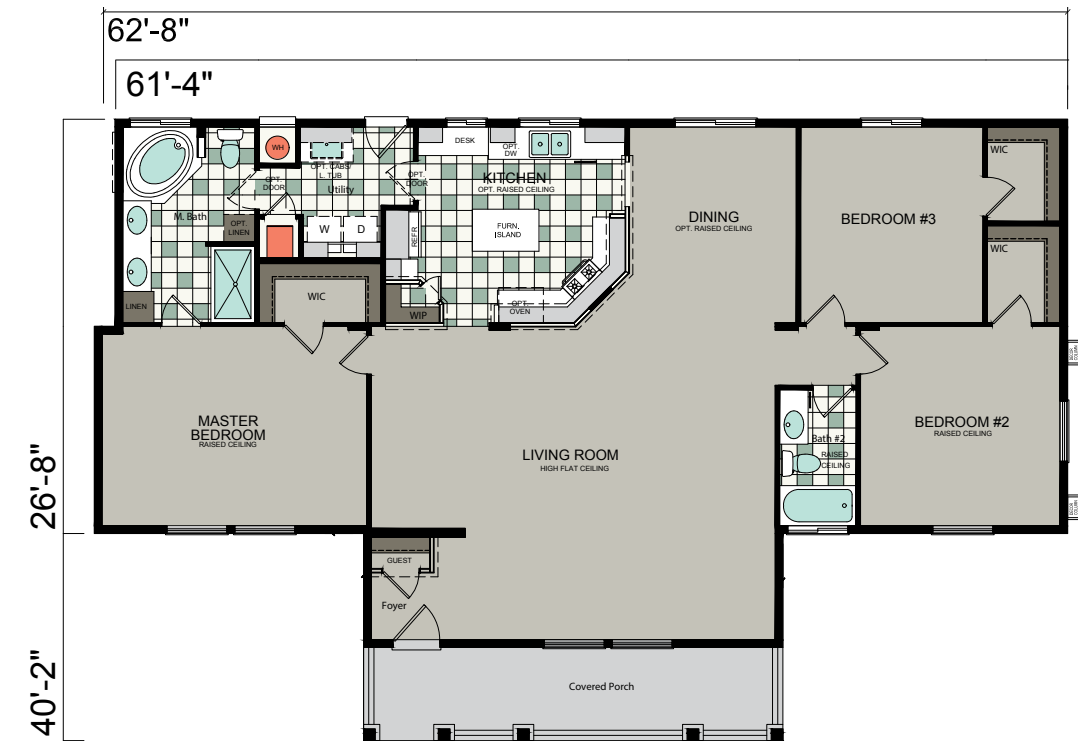
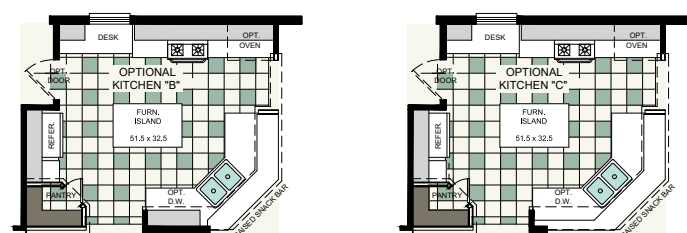




WC10

62'-8" x 26'-8" / 40'-2" w/ porch  
 3 bed-2 bath  
 1821 sq. ft.  
 2013 sq. ft. w/ porch

Shown with optional exterior elevation





# WC12

60' x 26'-8"  
3 bed-2 bath  
1534 sq. ft.



Shown with optional exterior elevation



WC12



# WC13

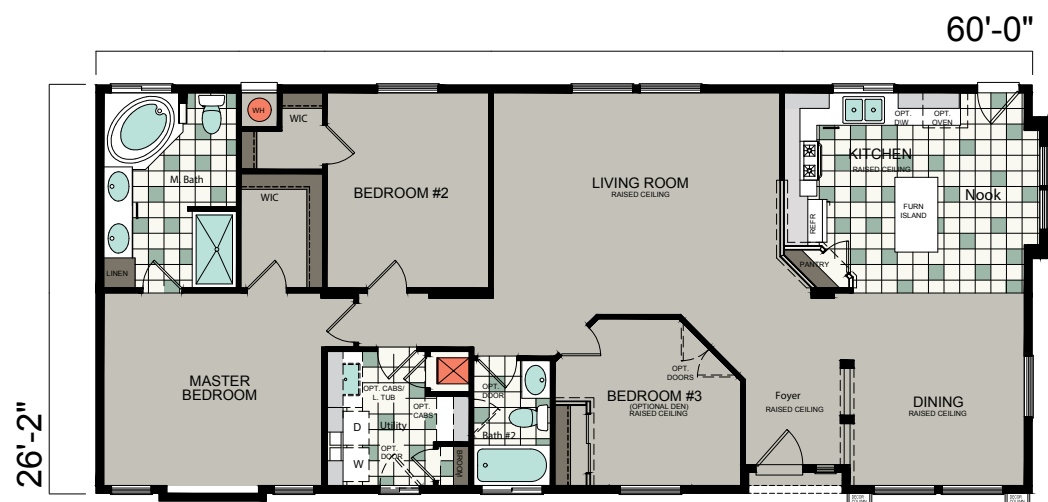
60' x 26'-8"  
3 bed-2 bath  
1575 sq. ft.



Shown with optional exterior elevation



OPTIONAL KITCHEN / MORNING ROOM  
(REQUIRES 8 FT. STRETCH)

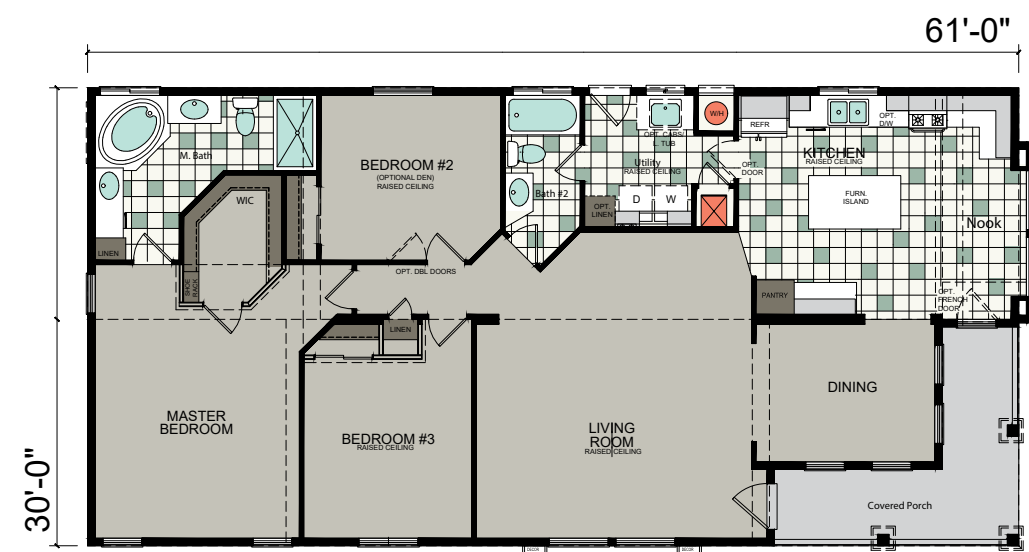


# WC20

61' x 30'  
3 bed-2 bath  
1712 sq.ft.  
1842 sq.ft. w/ porch

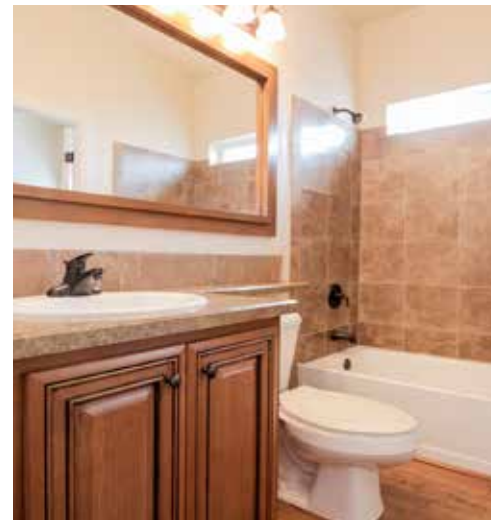


Shown with optional exterior elevation



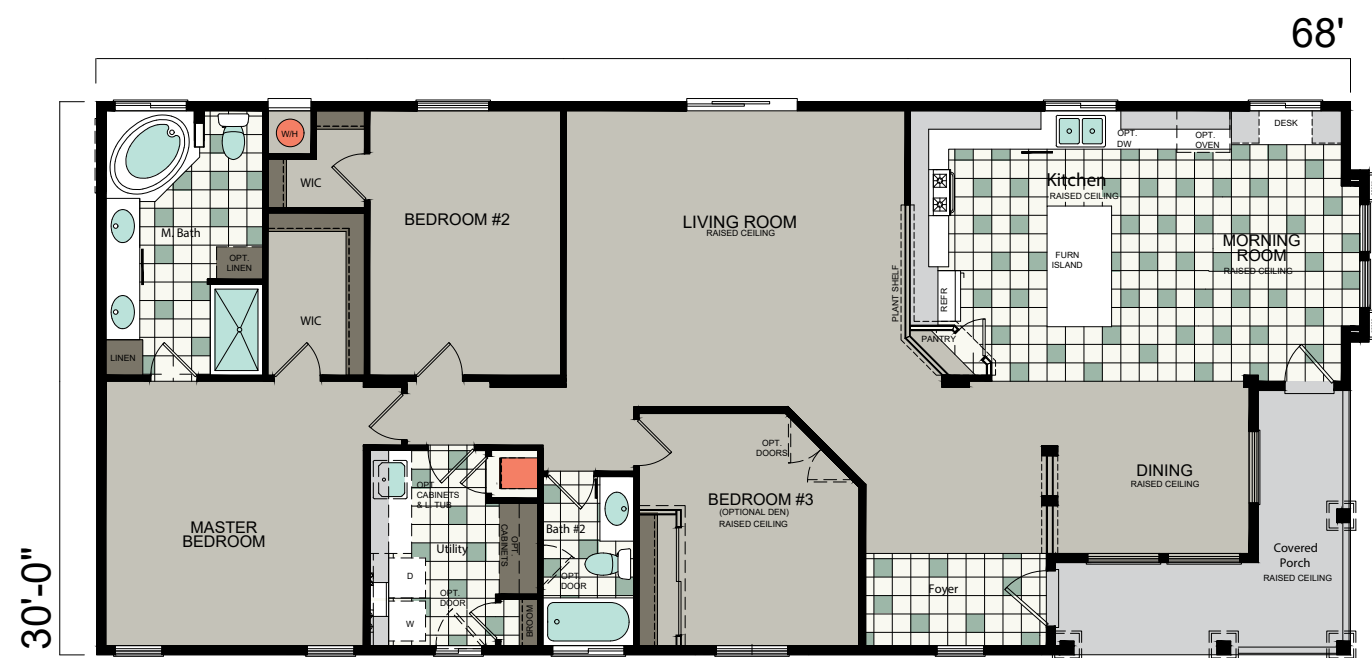


68' x 30'  
3 bed-2 bath  
1923 sq.ft.  
2049 sq.ft. w/ porch



62'-8" x 26'-8"  
3 bed-2 bath  
1632 sq.ft.

**Shown with optional exterior elevation**





# WC27

66'-8" x 26'-8" / 40'-0" w/ porch  
3 bed-2 bath  
2056 sq.ft.  
2284 sq.ft. w/ porch



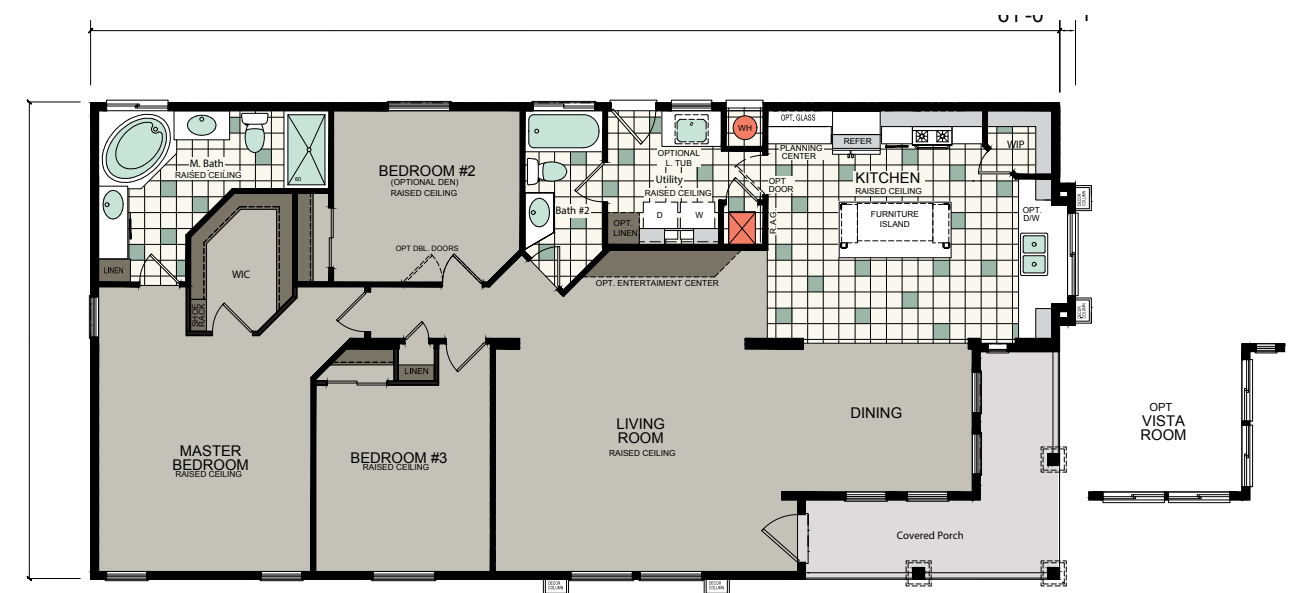
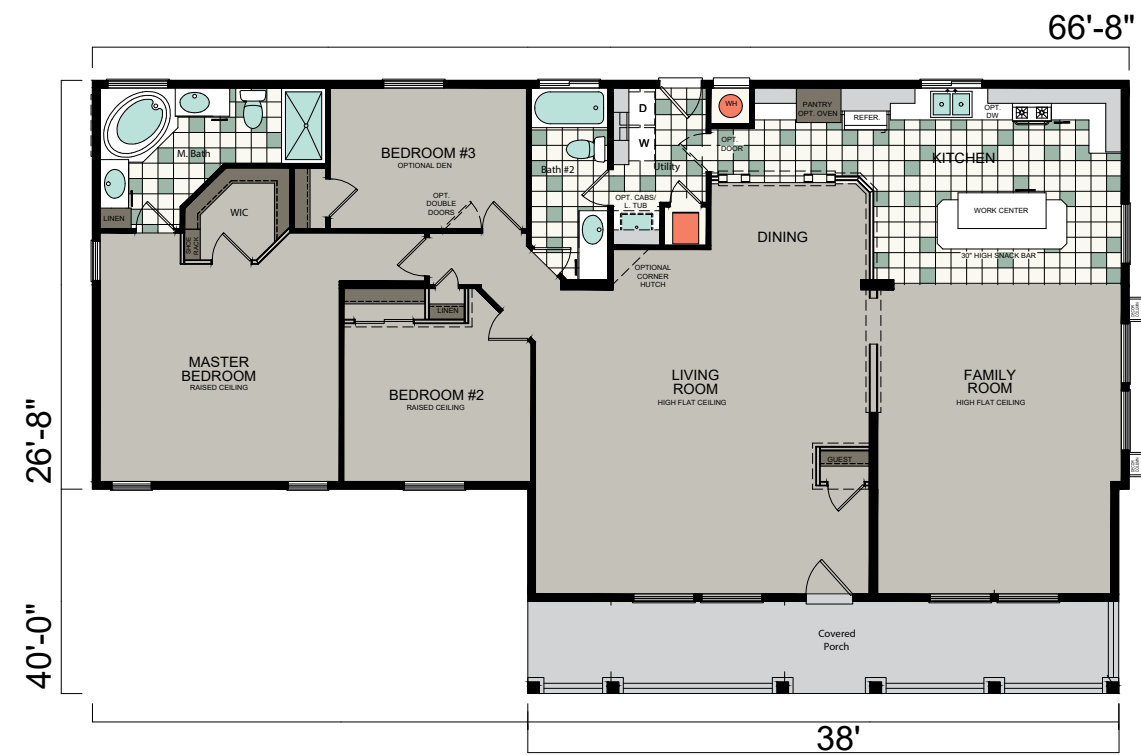
Shown with optional exterior elevation

# WC28

61'-0" x 30'  
3 bed-2 bath  
1703 sq.ft.  
1830 sq.ft. w/ porch



Shown with optional exterior elevation









# Standard features

### Construction & Specifications

- California CARB II Compliant Home
  - Includes Silvercrest’s “Silvershield” 7-Year Warranty
  - NOW ALSO INCLUDES STRUCTURAL COVERAGE!
  - (Deductibles Apply, Claims Processed By Cornerstone United Insurance Company)
- 20 Lb. Roof Load
- Insulation
  - Floor R-11
  - Walls R-19
  - Ceilings R-33
- All Structural Lumber Used is Kiln Dried for Higher Quality
- 2” X 6” / 2” X 8” Transverse Floor Joists – 16” on Center – Per Plan
- 2” X 6” Exterior Wall Studding – 16” on Center
- White Vinyl Framed, Dual Glazed Windows with Low-E Coating for Energy Savings – Windows are Energy Star® Rated and Approved
- PEX® Water Lines
- Water Shut-Off Valves at All Sinks and Toilets
- 5/8” Fire Rated Drywall Ceilings
- ½” Drywall on All Interior Walls
- ¾” OSB Floor Decking
- 90” and 108” Vaulted Ceiling in Designated Areas – Per Plan
- 100 Amp Electrical Service
- 30-Gallon Gas Water Heater
- Gas Down Flow Furnace with Energy Saving Digital Thermostat
- 14 SEER A-Coil Ready Box Below Furnace for Air Conditioning

### Interior Features

- Vaulted Interior Ceilings Throughout with Raised Ceilings in Designated Areas – Per Plan
- ½” Drywall on Walls with Rounded Corners
- Orange Peel Textured Finish on Walls and Ceilings
- Choice of 9 Interior Wall Colors Featuring PPG® Paint
- 2-Panel Passage and Wardrobe Doors Throughout
- Dramatic Sculptured Passage Door Moldings
- 3¼” Sculptured Floor Moldings Throughout (Optional 5¼” Also Available!)
- (3) Mortised Hinges on Passage Doors
- Lever-Style Passage Door Locksets with Satin Nickel Finish
- Hand Finished Wood Cabinets Throughout with Solid End Panel Construction
- Hidden Hinges with Soft Close Feature on Cabinet Doors
- Metal Drawer Guides
- Rocker-Style Light Switches with Matching Style Wall Outlets
- Metal Water Shut-Off Valves at All Fixtures
- 2” White Faux Wood Blinds with Matching Valance
- Plumb/Wire for Washer & Dryer
- USB Receptacle in Kitchen Area for Easy Recharging of Electronic Devices
- Concealed Closet Pole in Utility Overhead Cabinet
- White Wood Window Casings Throughout (Except Bath Areas)

### Exterior

- Semi-Gloss Exterior Paint with Three Color Design Featuring High Quality PPG® Paint
- “A” Fire Rated Architectural Shingles with Manufacturers 30-Year Limited Warranty
- High Wind Nailing Pattern on All Shingles (6 Nails Per Shingle vs. 4 Staples from Other Manufacturers)
- (2) Exterior GFI Protected Patio Outlets (Locations Vary Per Plan)
- 16” Front Overhang
- Sidewall Eaves (Construction Modifications Can Affect Standard Eave Design) – Per Plan
- Craftsman-Style Shutters – Per Plan
- 36” Craftsman-Style Fiberglass Insulated Entry Door with Deadbolt Security Lock
- 32” 6-Panel Fiberglass Insulated Rear Entry Door with ½ Glass Panel and Deadbolt Security Lock
- All Exterior Doors with Deadbolts Feature a Metal Plate on Door Jam for Added Security
- Cement Fiber Exterior Siding Materials with Manufacturers 25-Year Limited Warranty
- 8” Hardboard Fascia with 4” Hardboard Corner and Window Trim
- Craftsman-Style Exterior Columns with Hardie® Shingles at Bases
- Craftsman-Style Dual Glazed Windows with Grids in Upper Panes – Per Plan

### Floor Coverings

- Mohawk® Carpeting in Living Areas Featuring Smart Strand® Technology
- ½” Rebond Carpet Pad
- Upgrade Vinyl Flooring in Kitchen, Baths, Utility, Nook and Dining Areas – Per Plan

### Kitchen

- Whirlpool® White Finished Kitchen Appliances
  - 30” Gas Freestanding Range
  - 18 Cubic Foot Double Door Refrigerator
- Moen® Dual Handle Faucet with Manufacturers Limited Lifetime Warranty on Finish and Parts
- Adjustable Shelves in Overhead Cabinets Finished with White Lined Cabinet Interiors
- 8” Deep Stainless Steel Self-Rimming Sink
- Crown Molding on All Overhead Cabinets
- Toe Kick Heat Register in Base Cabinets – Per Plan
- Corian® Countertops with 4” Corian® Backsplash
- Furniture-Style Kitchen Island Per Plan – Most Models

### Master Bath

- Designer Selected Wall Mount Light Fixture Above Sinks
- Corner Tub with Separate Shower – Per Plan
- Corian® Countertops with 4” Corian® Backsplash
- Beveled Edge Mirrored Medicine Cabinet
- (2) China Self-Rimming Sinks
- Towel Bar and Paper Holder with Satin Nickel Finish
- Elongated Low Flow Water-Saving Toilets
- Moen® Dual Handle Chrome Faucet with Manufacturers Limited Lifetime Warranty on Finish and Parts
- Moen® Tub Shower Faucet Featuring Pressure Balance Valves (Helps Prevent Temperature Variations to Reduce the Chance of Scalding Ceiling Vented Exhaust Fan)
- Upgrade Vinyl Floor Covering
- Bank of Drawers in Selected Area – Per Plan

### Bath Two

- Designer Selected Light Fixture Above Sink
- 60” One-Piece Fiberglass Tub / Shower
- Upgrade Vinyl Floor Covering
- China Self-Rimming Sink
- Corian® Countertop with 4” Corian® Backsplash
- Elongated Low Flow Water-Saving Toilets
- Towel Bar and Paper Holder
- Ceiling Vented Exhaust Fan
- Moen® Dual Handle Chrome Faucet with Manufacturers Limited Lifetime Warranty on Finish and Parts
- Moen® Tub / Shower Faucet Featuring Pressure Balance Valves (Helps Prevent Temperature Variations to Reduce the Chance of Scalding)

### Lighting

- Designer Selected Lighting in Designated Areas
- Switched Wall Outlet for Lamp Lighting in Living Room and All Bed Rooms (Wall Outlet Designated By Being Installed Upside Down for Easy Identification)
- Ceiling Lights in Utility and Walk-in Wardrobes – Upgrade Hall Light LED Can Lights in Kitchen Per Plan – Includes Bulb

### Silvercrest “Smart Choice” Options for Your “Smart Design” Homes

- Energy Star® Package- R-38 Ceiling / R-19 Walls / R-22 Floor (If Required)
- Energy Saving Tankless Gas Water Heater by Noritz®
- Metlund® D’MAND Hot Water Circulation System (Saves You Water and Energy)
- Reflective Roof Sheathing for a Cooler Roof Attic Area (Saves You Money on Heating and Cooling Costs)
- Tubular Skylights (Light Home Interiors without Using Electricity During Daylight Hours and Save Energy)
- Prep Raceways for Wall Mount Flat Screen Television
- “WUI” Compliant Structural Package for Homes Located in California
- Fire Sprinkler System
- Whirlpool® and Kitchen Aid® Appliance Packages
- Additional LED Can Lights throughout Home – Includes Bulb
- Rain Forest Tile Shower – Mirage Tile Shower with Fiberglass Pans in Bathrooms



Due to continuous product development and improvement, prices, specifications, and materials are subject to change without notice or obligation. Square footage and other dimensions are approximate. Exterior images may be artist renderings and are not intended to be an accurate representation of the home. Renderings, photos and floor plans may be shown with optional features or third-party additions.









299 N. Smith Avenue  
Corona, CA 92880

**[silvercrest.com](http://silvercrest.com)**

