



# 2020 PHOTO GUIDE

# ELEVATIONS



**3/12 - 24' DORMER**



**DECO DORMER #5 WHITE SHAKES  
HALF PORCH ON GABLE END**



**FULL PORCH ON GABLE END**



**EYEBROW WITH EXTENDED EAVE**



**DECO DORMER #5 TEAK SHAKES**



**3/12 DOUBLE EAVE DORMER**



**ELEVATION "A" WITH LINEALS**



**3/12 DOUBLE EAVE DORMER  
W/DECO DORMER & FULL BOX BAY**



**5/12 SHIP LOOSE DORMER**



**SW ENDWALL EYEBROW**



**SW PORCH**





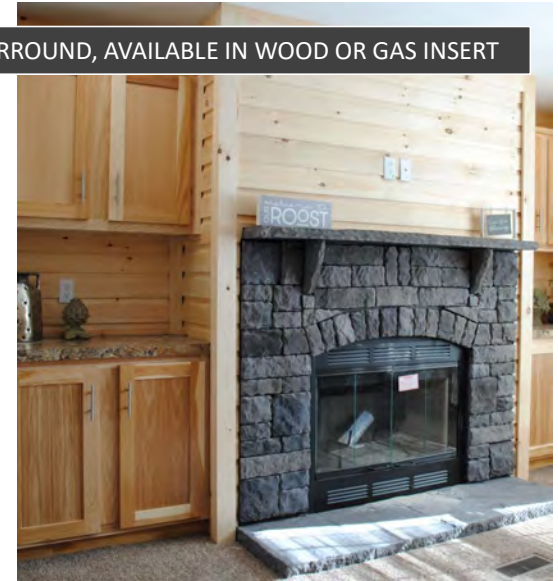
50" ELECTRIC FIREPLACE WITH COUNTERTOP  
AND SOUTHSIDE BRICK



50" ELECTRIC FIREPLACE WITH  
THOMPSON WOOD PLANK



GREY OR BROWN HALF STONE SURROUND, AVAILABLE IN WOOD OR GAS INSERT



# FIREPLACES



50" ELECTRIC FIREPLACE WITH COUNTERTOP  
AND THOMPSON WOOD PLANK



A26009 FIREPLACE OPTION



A26404 / A25604 FIREPLACE OPTION

2 BULB NICKEL LIGHT



LED RECESSED LIGHT

5 BLADE CEILING FAN



# LIGHTING

PENDANT LIGHTS



BLACK SHADE



NICKEL

BLACK CAGE LIGHT



CHANDELIER





60" SHAKER WALL



WOOD PLANK FEATURE WALL

# INTERIOR

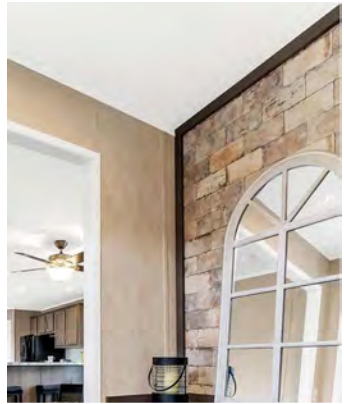
REDMAN HOMES.



DESTIN WHITE FEATURE WALL



PINE LAP FEATURE WALL  
PINE CEILING BEAMS



SOUTHSIDE TILE FEATURE WALL



2 PANEL WHITE DOOR



WOOD/MDF DOOR



WOOD PLANK DOOR



DOUBLE PINE BARN DOOR

BARN DOORS

INTERIOR DOORS

REDMAN HOMES.



BIPASS SLIDING CLOSET DOOR



MURPHY DOORS



HIDDEN PANTRY







4" DROP EDGE ON ISLAND COUNTERTOP



CRESCENT EDGE COUNTERTOP

# KITCHEN

REDMAN  HOMES.



UK3 FARM SINK WITH ACCESSORIES  
AND FAUCET WITH BLACK INSERT



STAINLESS STEEL RANGE HOOD



UK2 FARM SINK WITH GOOSENECK FAUCET





DRAWER BANK



DRAWER OVER DOOR  
BASE CABINET



POT & PAN DRAWER



CABINET OVER FRIDGE



3 DOOR

PANTRIES



6 DOOR

REDMAN HOMES.

# KITCHEN



UK2 OVERHEAD TRIM

OVERHEAD SKIRT MOLDING



42" OVERHEAD CABINETS



BEVERAGE CENTER WITH WINE CHILLER





FULL COUNTER TO  
CABINET GLASS TILE



SOUTHSIDE TILE FULL COUNTER TO CABINET



1 ROW OF GLASS TILE



## KITCHEN TILE BACKSPLASH



SUNBURST



DYNASTY



9 LITE



PICTURE WINDOWS

## EXTERIOR DOORS & WINDOWS

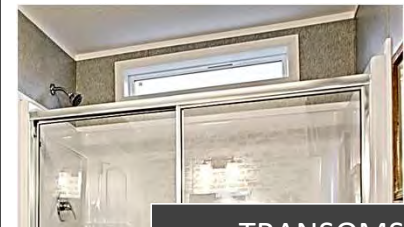


SLIDING GLASS DOOR



FIXED GLASS WINDOW

REDMAN HOMES.



TRANSOMS







EXTERIOR FAUCET



EXTERIOR GFI



PHONE



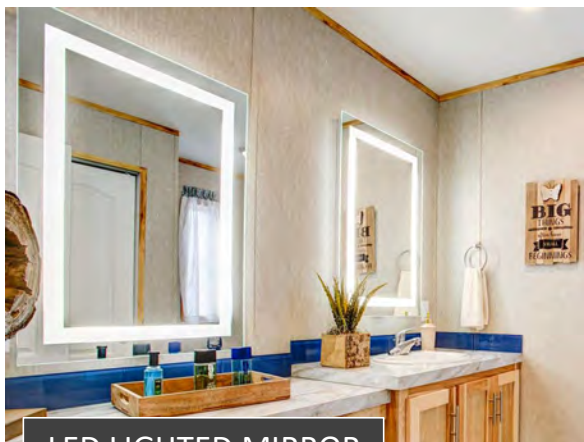
TV



MULTI-MEDIA

# MISCELLANEOUS

---



LED LIGHTED MIRROR



REFLECTIONS CABINET



# VANITY OPTIONS

REDMAN HOMES.

SURFACE MOUNT COZ BOX



SAFARI MIRROR TRIM



FRAMED MIRROR  
1 ROW GLASS TILE BACKSPLASH





60" 3-SIDED TILED SHOWER WITH BARN DOOR



SWEETHEART MASTER BATH



REDMAN HOMES.

# SHOWER / TUB



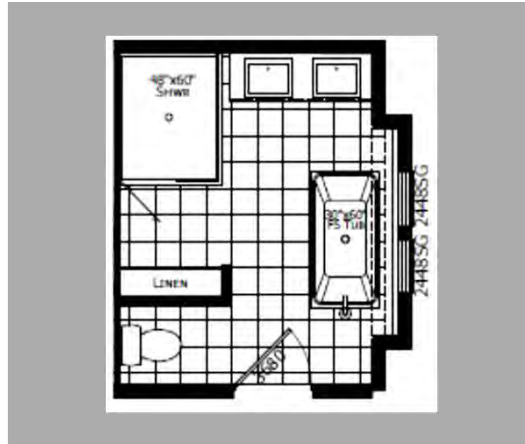
42" X 60" GARDEN TUB



72" 3-SIDED TILED SHOWER WITH FIXED GLASS

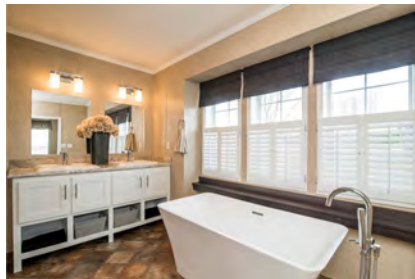


60" EASY ACCESS SHOWER



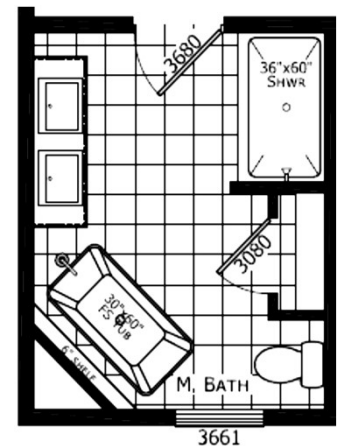
## RADIANT SPA:

DESIGNER SINKS & FAUCETS  
48X60 AGILE SHOWER  
LINEN / ROBE CABINET  
FREE STANDING TUB WITH  
FLOOR MOUNT FAUCET  
LED RECESSED LIGHTS  
TILE BACKSPLASH  
SHOWER TOWER  
BUMP OUT AT TUB



## MINI RADIANT SPA:

SCALED DOWN VERSION  
WITH 60" FIBERGLASS  
SHOWER



REDMAN HOMES.

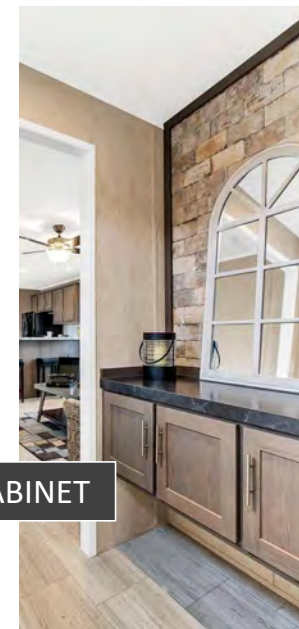




DOUBLE OVERHEAD FOR WASHER / DRYER

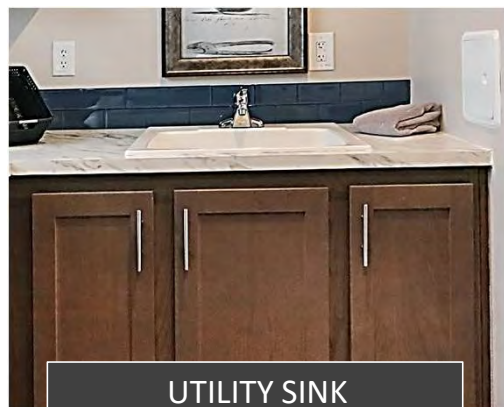


FLOATING FOYER CABINET

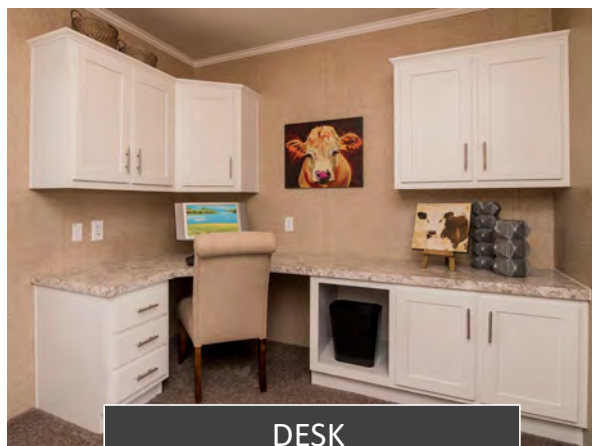


REDMAN HOMES.

# MISC CABINETS



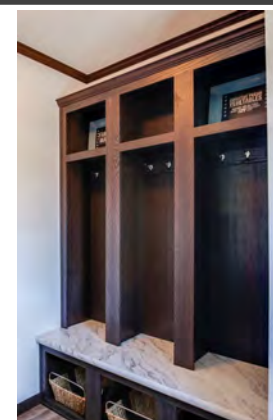
UTILITY SINK



DESK



COAT CADDY



COAT LOCKER

# METAL ROOF

---



REDMAN  HOMES.







REDMAN HOMES.

STAINLESS STEEL APPLIANCES  
 COOK TOP  
 BUILT IN OVEN  
 BUILT IN MICROWAVE  
 RANGE HOOD  
 SBS FRIDGE  
 DISHWASHER



STAINLESS FARM SINK WITH  
 GOOSENECK FAUCET

POT FILLER BEHIND RANGE

GLASS CNTR TO CAB BACKSPLASH

CRESCENT EDGE

PUCK LIGHTS OVER SINK

DRAWER OVER DOOR BASE CABINETS





STAINLESS STEEL APPLIANCES  
SLIDE IN GAS/ELECT RANGE  
BUILT IN MICROWAVE  
RANGE HOOD  
SBS FRIDGE  
DISHWASHER



STAINLESS FARM SINK WITH  
ACCESSORIES & GOOSENECK  
FAUCET W/BLACK ACCENTS

OVERHEAD CABINET WITH  
BIFOLD LIFTERS , GLASS &  
PUCK LIGHTS

GLASS CNTR TO CAB BACKSPLASH

CRESCENT EDGE

STAINLESS STEEL BACKSPLASH BEHIND RANGE  
WITH COOLING RACKS

STAINLESS STEEL FLOATING SHELVES ON EACH  
SIDE OF RANGE

PUCK LIGHTS OVER SINK

DRAWER OVER DOOR BASE CABINETS

