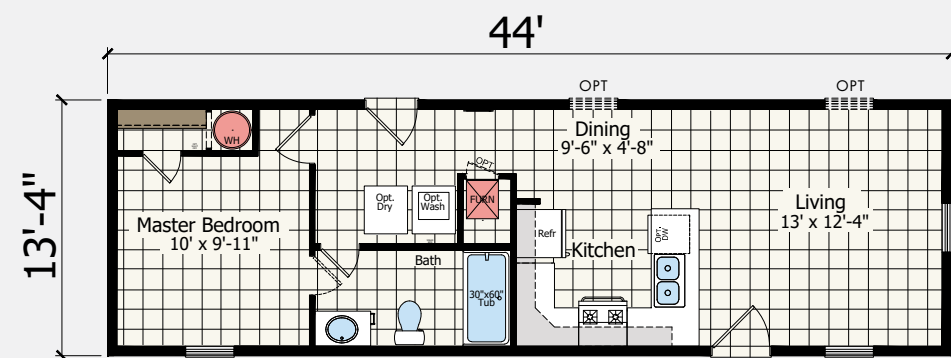


ADVANTAGE SERIES

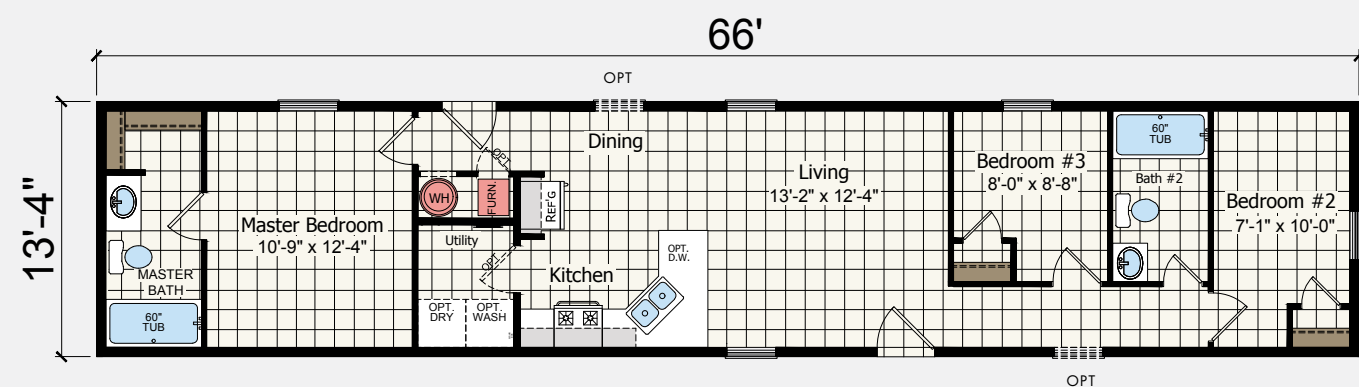


REDMAN  HOMES®

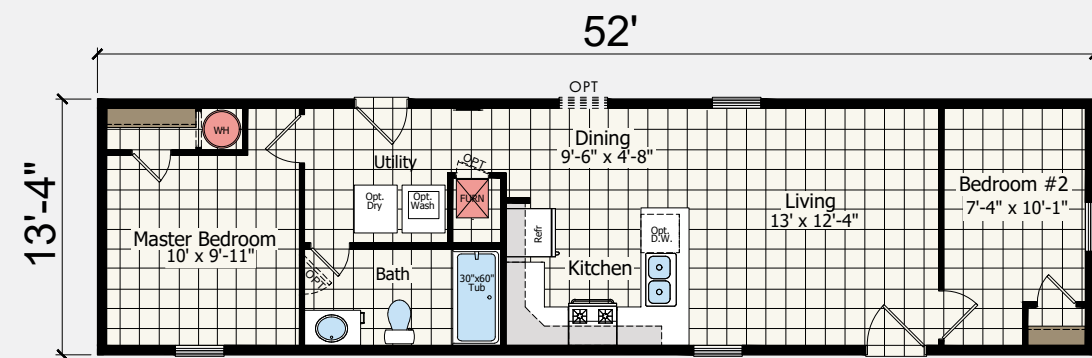
ADVANTAGE
F34427 | 1 BED-1 BATH
587 SQ. FT.



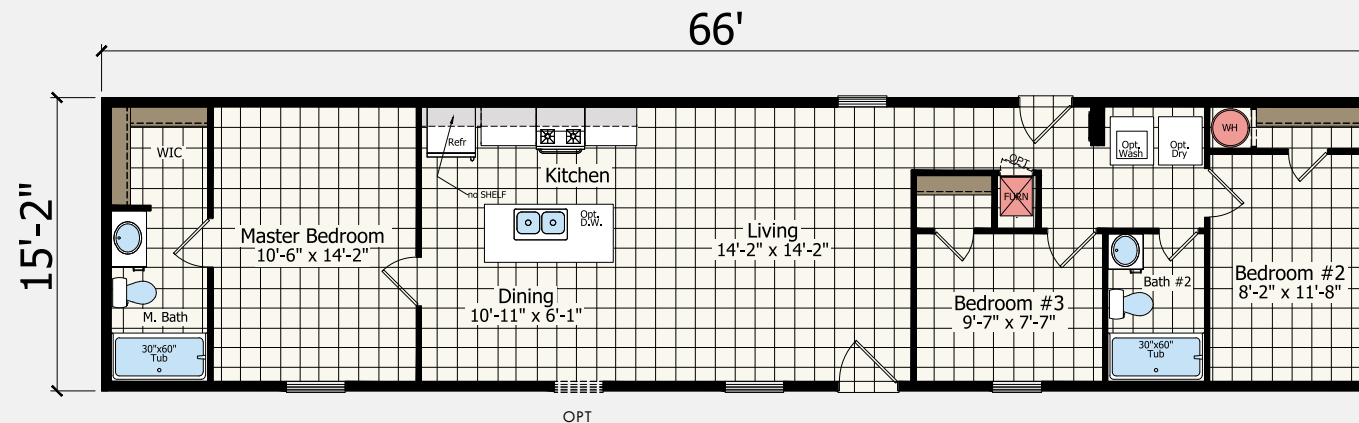
ADVANTAGE
F36627 | 3 BED-2 BATH
880 SQ. FT.



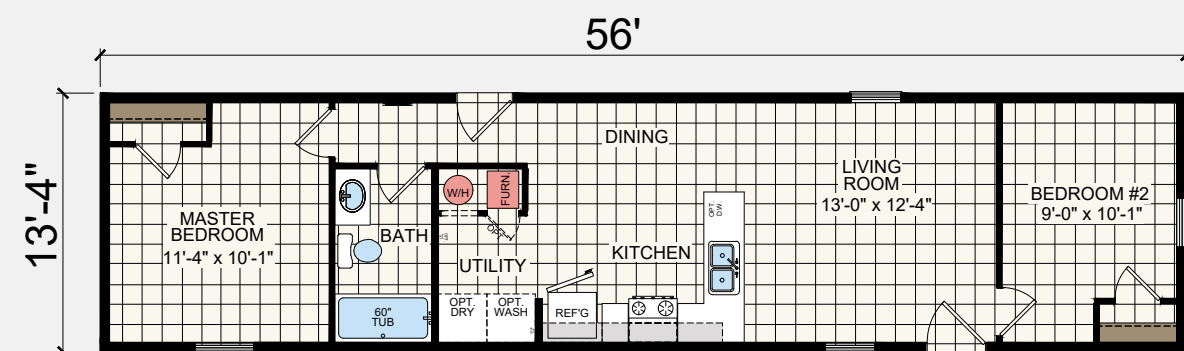
ADVANTAGE
F35227 | 2 BED-1 BATH
693 SQ. FT.



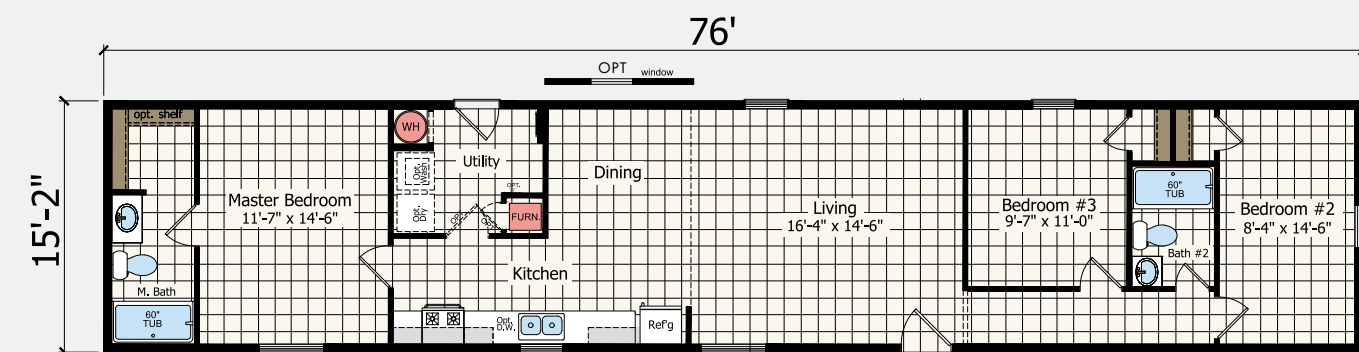
ADVANTAGE
L36626 | 3 BED-2 BATH
1001 SQ. FT.



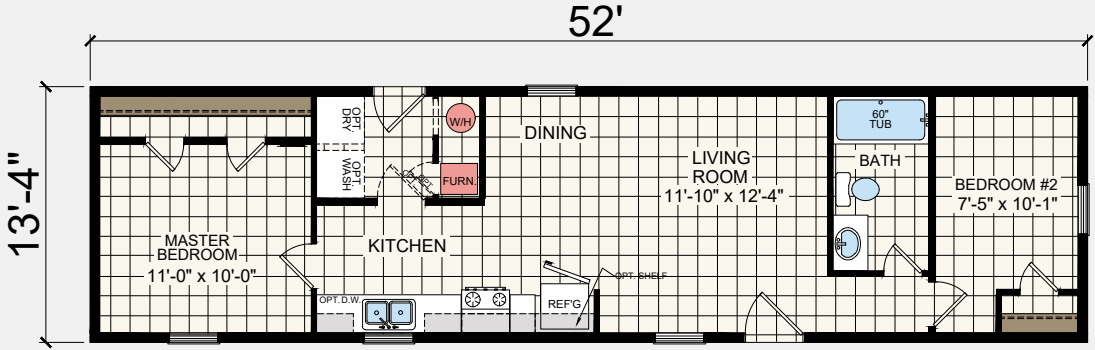
ADVANTAGE
F35627 | 2 BED-1 BATH
747 SQ. FT.



ADVANTAGE
L37625 | 3 BED-2 BATH
1153 SQ. FT.

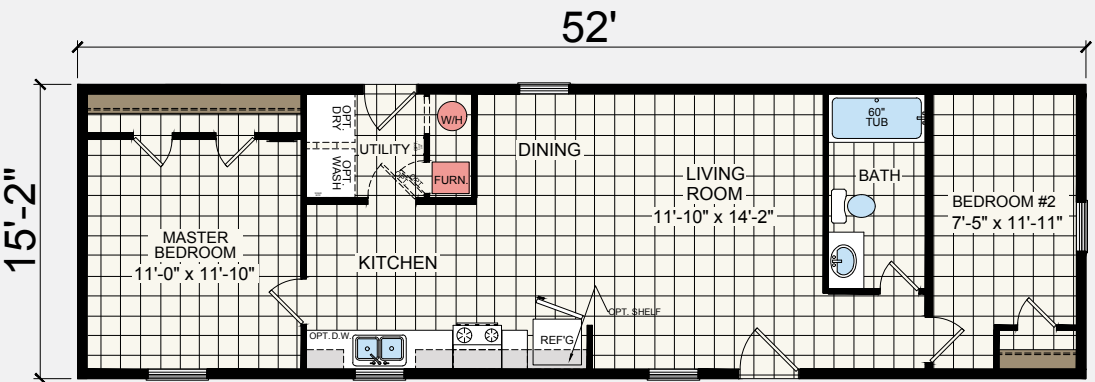


ADVANTAGE
F35225 | **2 BED-1 BATH**
693 SQ. FT.



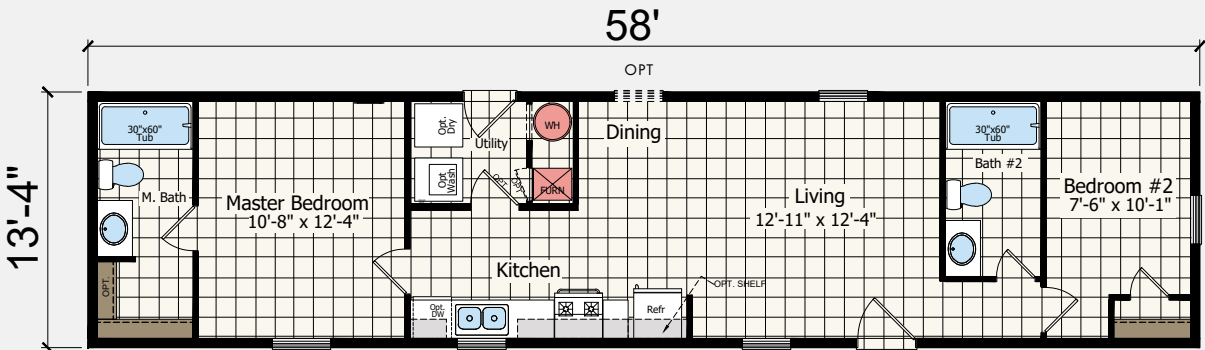
OPT52

ADVANTAGE
L35225 | **2 BED-1 BATH**
789 SQ. FT.



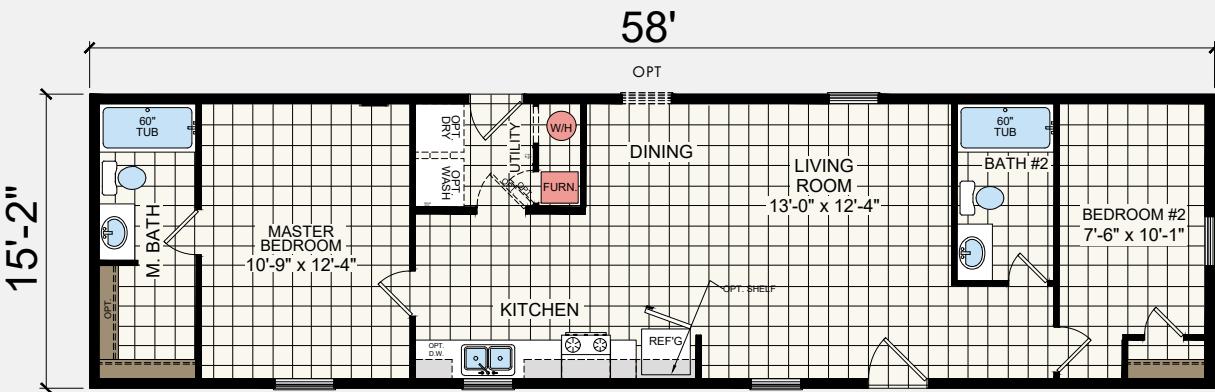
OPT52

ADVANTAGE
F35225 | **2 BED-2 BATH**
773 SQ. FT.



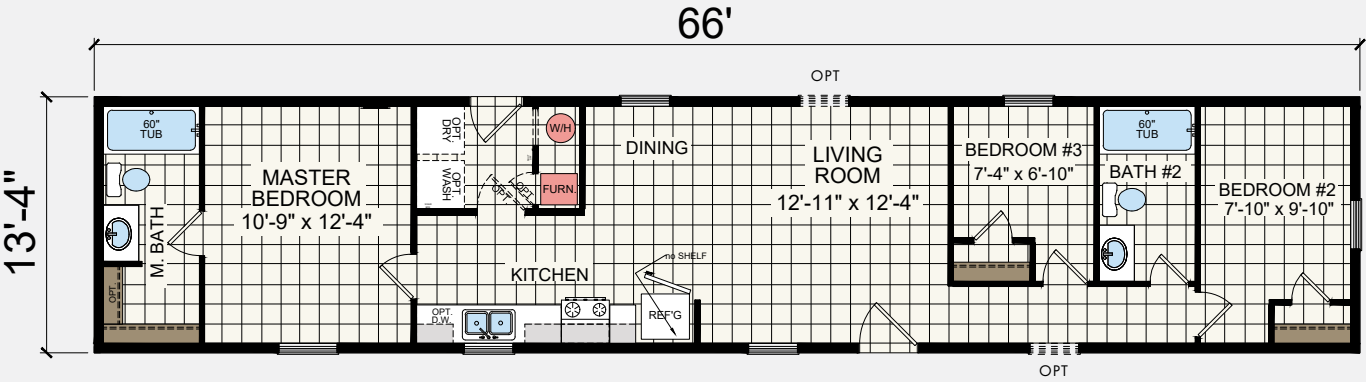
OPT58

ADVANTAGE
L35225 | **2 BED-2 BATH**
880 SQ. FT.



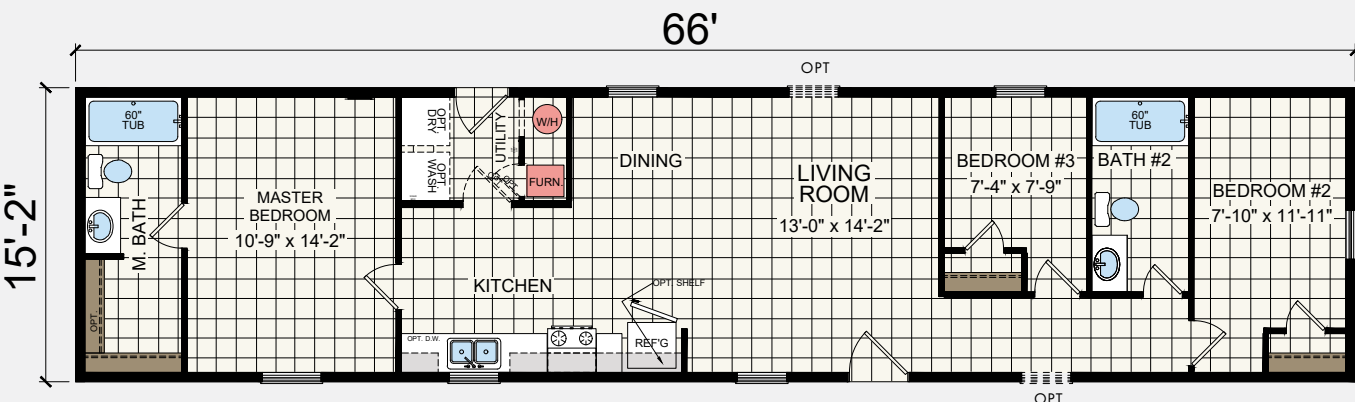
OPT58

ADVANTAGE
F35225 | **3 BED-2 BATH**
880 SQ. FT.



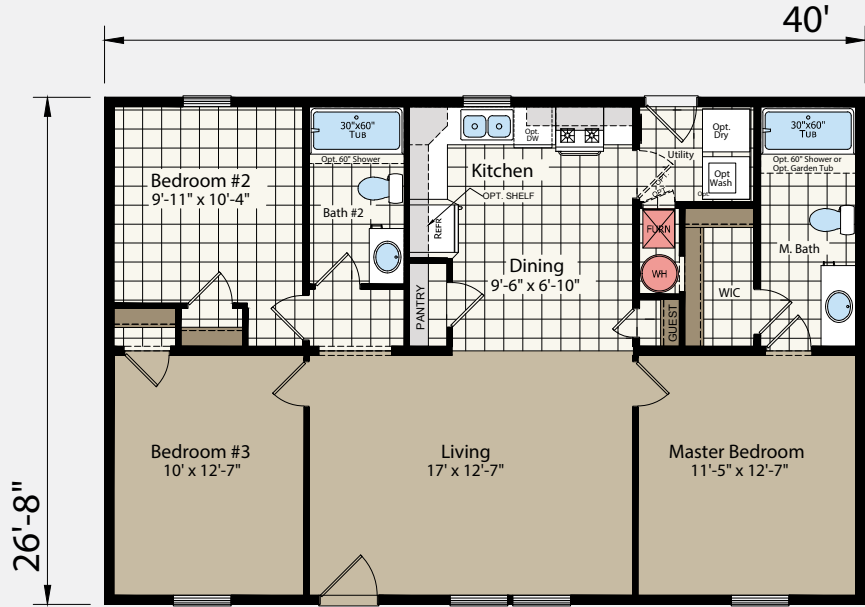
OPT66

ADVANTAGE
L35225 | **3 BED-2 BATH**
1001 SQ. FT.

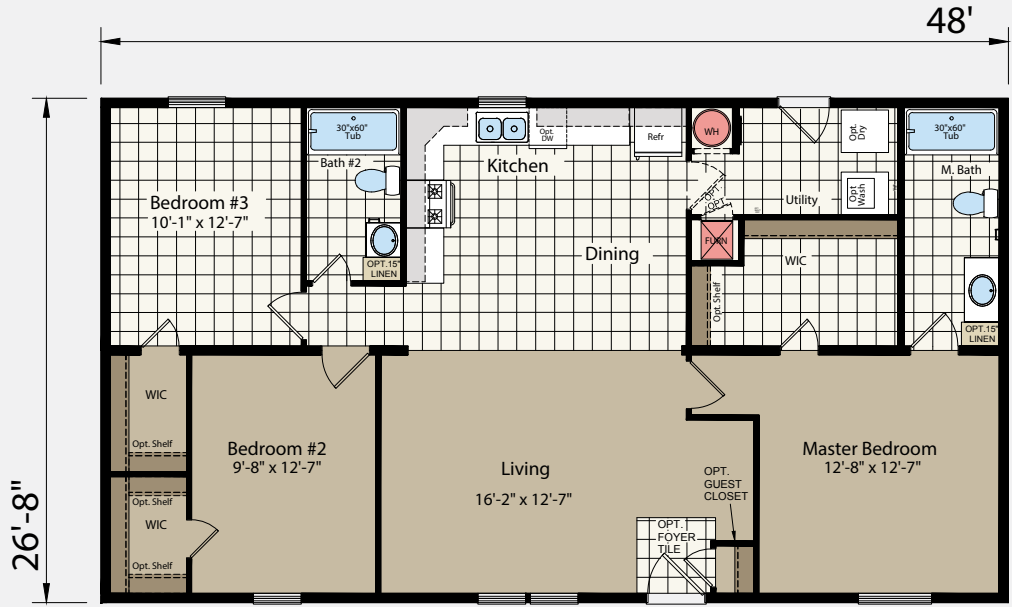


OPT66

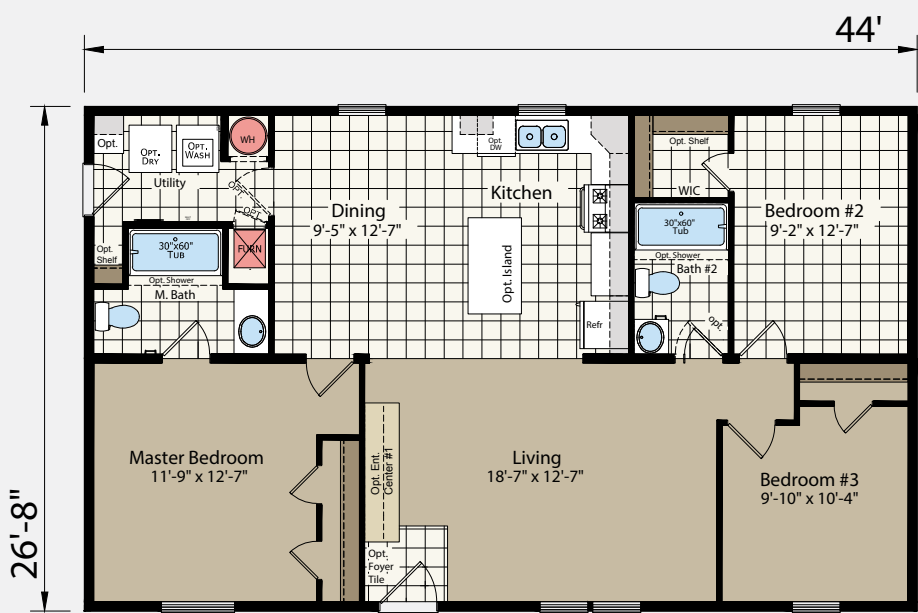
ADVANTAGE
A34025 | **3 BED-2 BATH**
1067 SQ. FT.



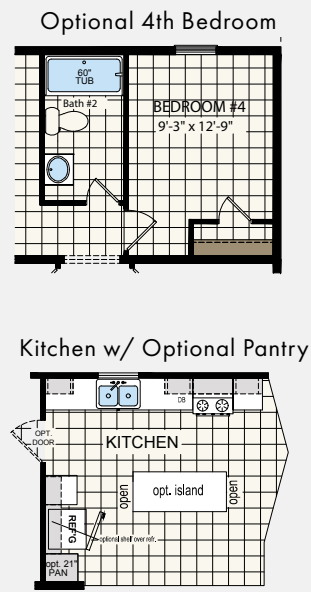
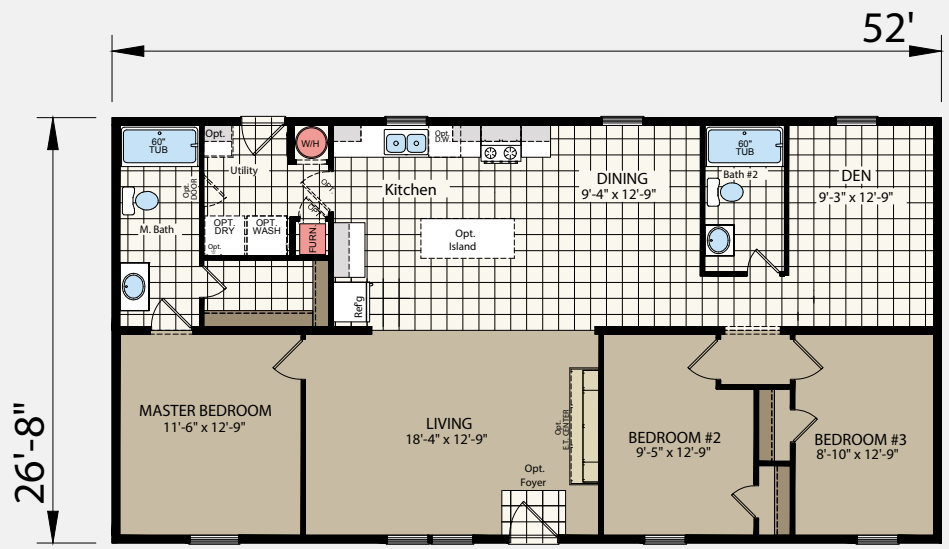
ADVANTAGE
A34825 | **3 BED-2 BATH**
1280 SQ. FT.



ADVANTAGE
A34426 | **3 BED-2 BATH**
1173 SQ. FT.

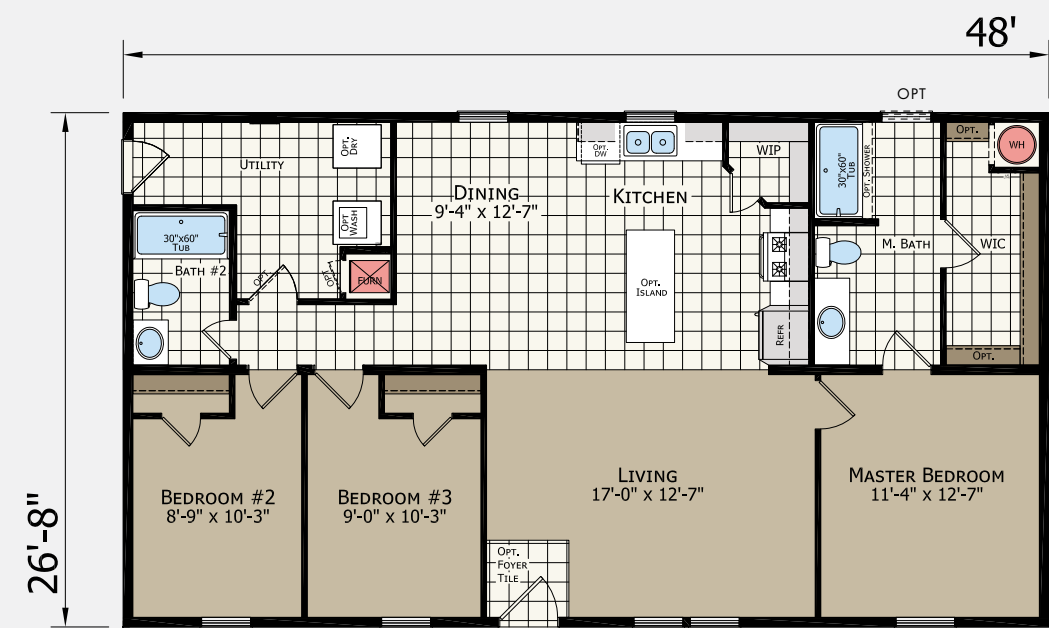


ADVANTAGE
A35226 | **3 BED-2 BATH**
1387 SQ. FT.



ADVANTAGE
A34827

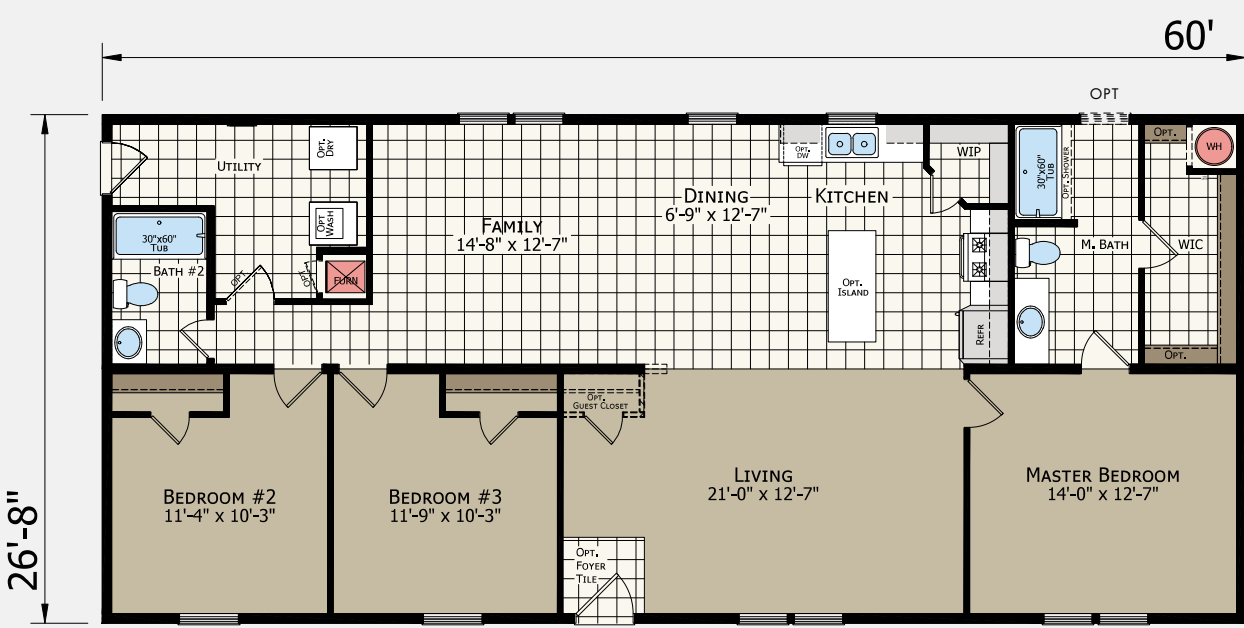
3 BED-2 BATH
1280 SQ. FT.



OPT48

ADVANTAGE
A34827

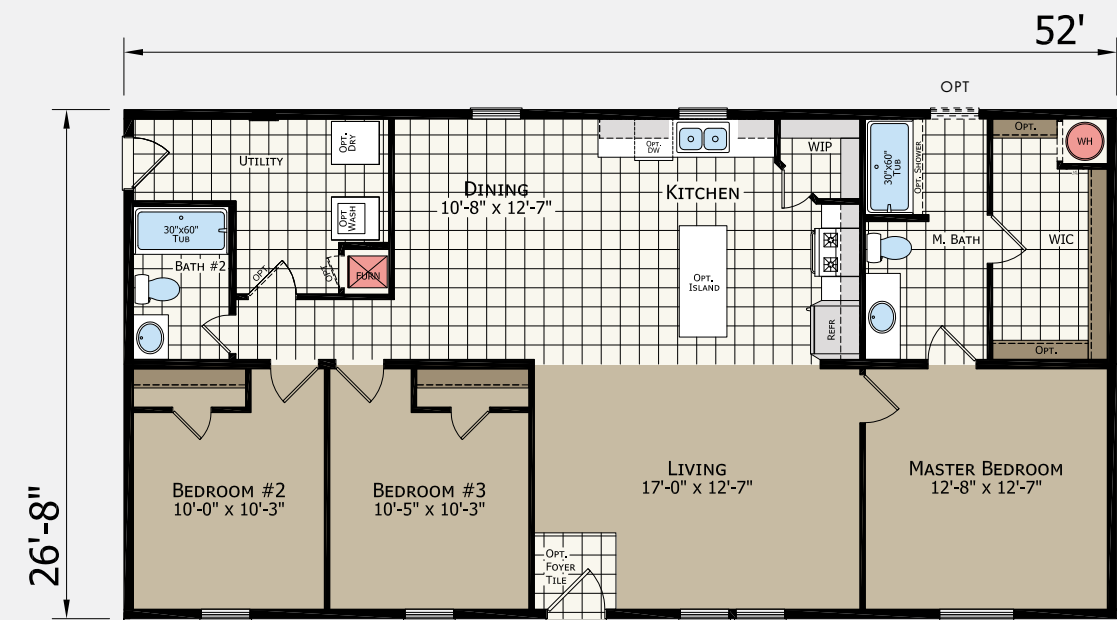
3 BED-2 BATH
1600 SQ. FT.



OPT60

ADVANTAGE
A34827

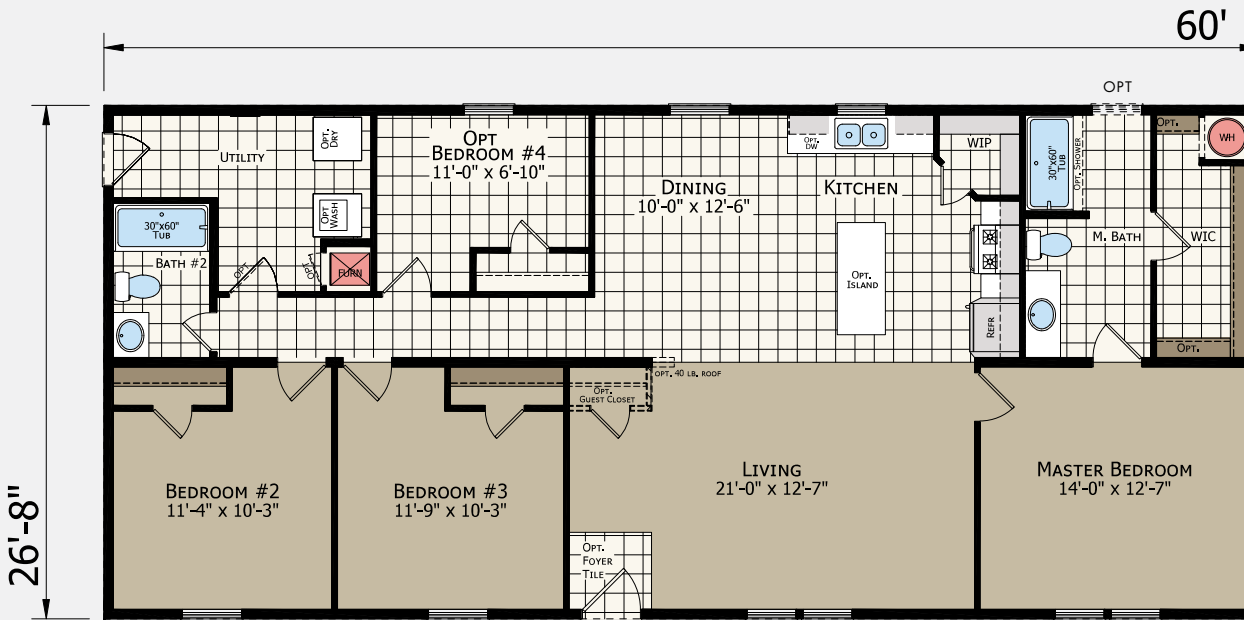
3 BED-2 BATH
1387 SQ. FT.



OPT52

ADVANTAGE
A34827

4 BED-2 BATH
1600 SQ. FT.



OPT60 / 4BED

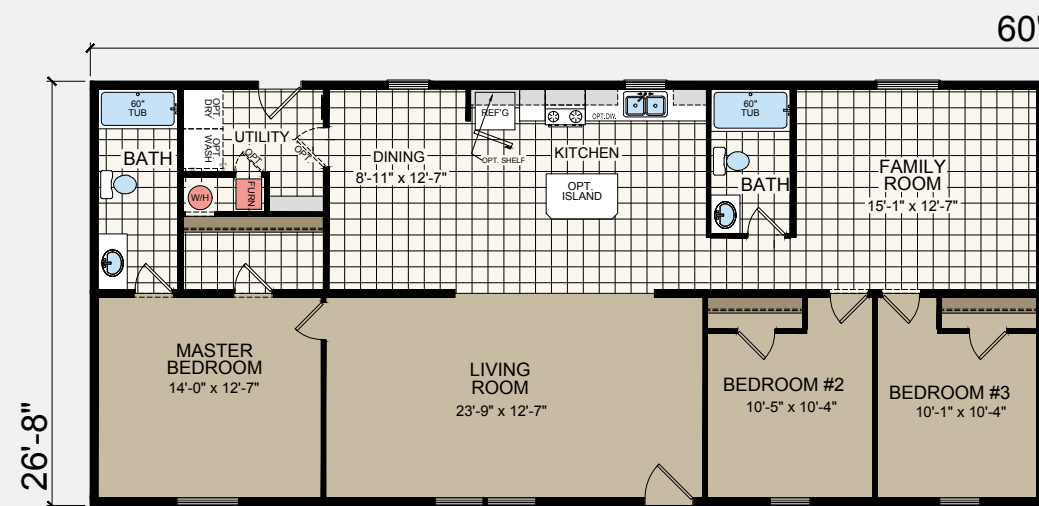
ADVANTAGE A35626

3 BED-2 BATH
1493 SQ. FT.



ADVANTAGE A36025

3 BED-2 BATH
1600 SQ. FT.



ADVANTAGE SERIES

STANDARD FEATURES

CONSTRUCTION

- I-beam with Removable Hitch
- 2x6 Sidewall**
- 8' Sidewall
- 2x6 Floor Joist (2x8 on 16' Wide)
- Tongue and Groove OSB Floor Decking
- Nominal 3/12 Roof Pitch
- 20 lb. Roof Load
- 3-Tab Shingles with Ridge Vent
- Non-Low-E Vinyl Window – No Grids
- Foam Core Sheathing
- R-19 Wall Insulation**
- R-11 Floor Insulation
- R-22 Ceiling Insulation

EXTERIOR

- Vinyl Dutch Lap Siding with Corners
- Shutters-FDS Multi-Section (Optional Single-Section)
- 6-Panel Front Door
- 9-Lite Rear Door

INTERIOR

- Residential Textured Ceiling
- 115 Cove and Casing
- Vented Closet Shelves
- Carpet – Per Plan (Multi-Section)
- Rolled Vinyl Linoleum Areas
- Rolled Vinyl Linoleum Throughout (Single-Section)
- Thermostat
- White Interior Doors
- Passage Doorknobs
- Wall Mounted Doorstops

PLUMBING & HEATING

- Electric Furnace
 - In-line Heat Registers
 - 30-Gallon Electric Water Heater
 - Washer and Dryer Prep
- ### ELECTRICAL
- 200 AMP Service
 - Exterior GFI
 - Combo Detectors**
 - White Exterior Lights
 - LED Recessed Lights in Standard Areas
 - Switched Receptacles at Living Room and Bedrooms

KITCHEN

- Stainless Steel Sink with Faucet
- Drawer Bank
- 30" Overheads – No Trim
- MDF Cabinets and Stiles – No Hardware
- Electric Range – Coiled Top
- Range Hood with Light
- 18 Cu. Ft. Refrigerator

BATHROOM

- 1-Piece Fiberglass Tub
- Plastic Sink with Faucet
- Round Front Toilet
- Vanity Mirrors
- Exhaust Fan Without Light
- MDF Cabinets and Stiles – No Hardware

**Forced Options in Northeast Region

Due to continuous product development and improvement, prices, specifications, and materials are subject to change without notice or obligation. Square footage and other dimensions are approximate. Exterior images may be artist renderings and are not intended to be an accurate representation of the home. Renderings, photos and floor plans may be shown with optional features or third-party additions.



101 Garden Spot Rd, Ephrata, PA 17522

www.redmanhomesofpa.com