

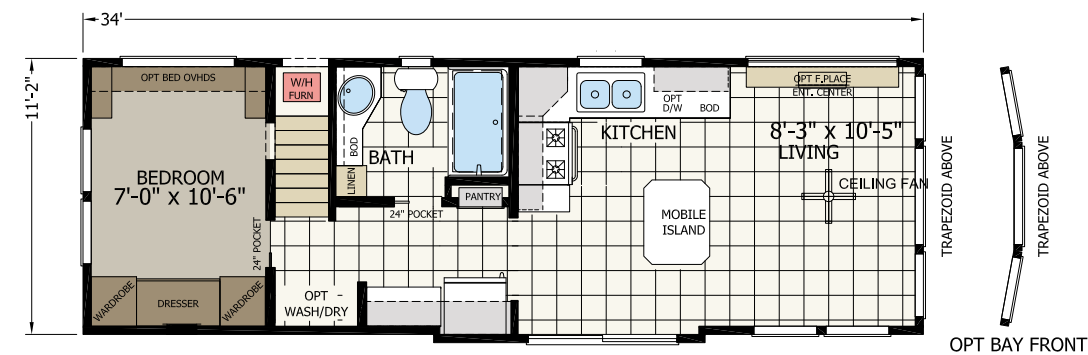
The image features a large, light-colored house-like RV with a gabled roof, multiple windows with white frames and light-colored curtains, and a wooden deck with steps leading up to it. A large, bright blue triangular graphic is overlaid on the top half of the image, containing the Highland Park Model RVs logo and text. The background shows green trees and a clear blue sky.

HIGHLAND™
PARK MODEL RVs

PARK MODEL
SERIES



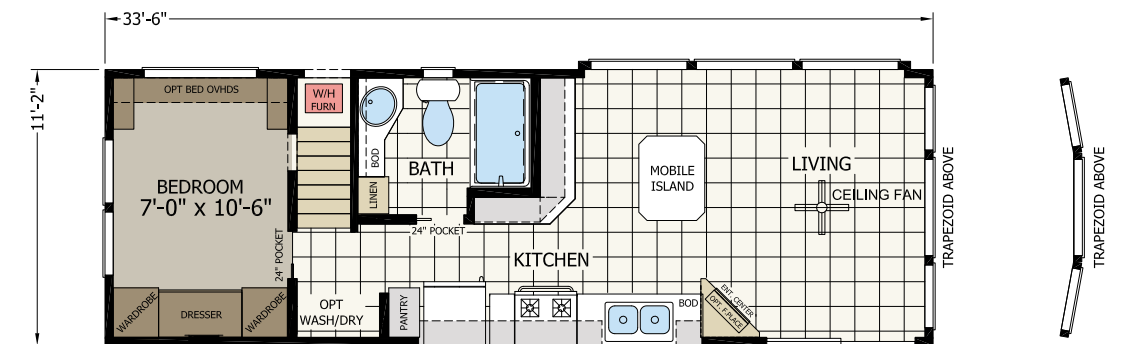
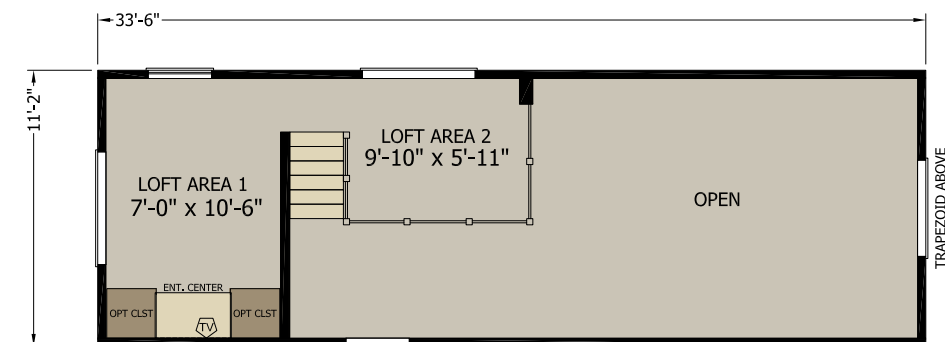
Model 504 | 11'-2" x 34' | 1 bed-1 bath | 399 sq.ft.



OPT BAY FRONT



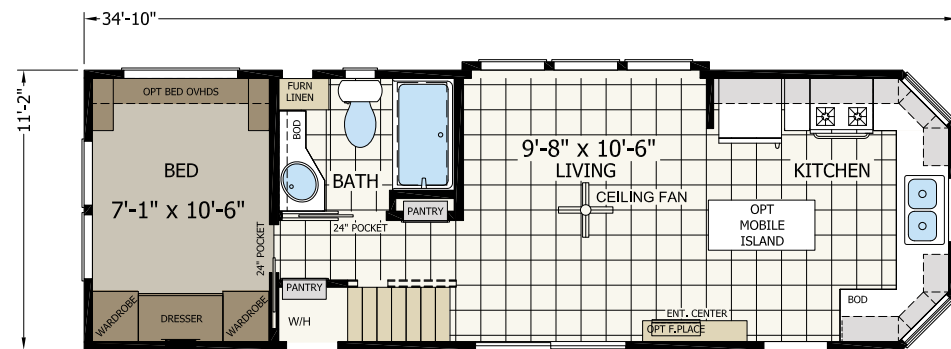
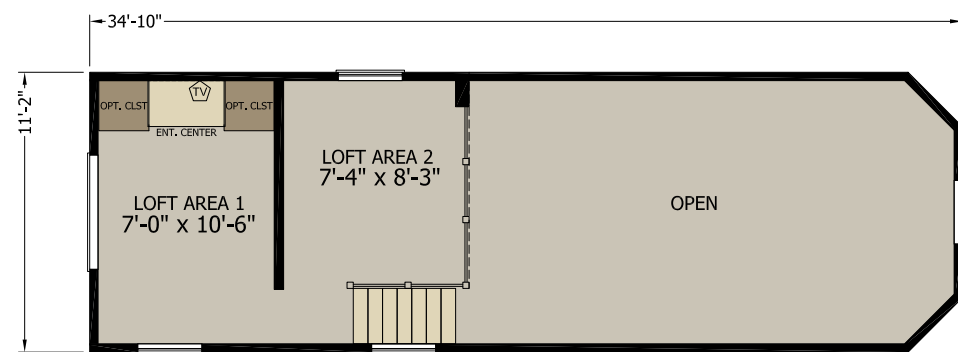
Model 505 | 11'-2" x 33'-6" | 1 bed-1 bath | 399 sq.ft.



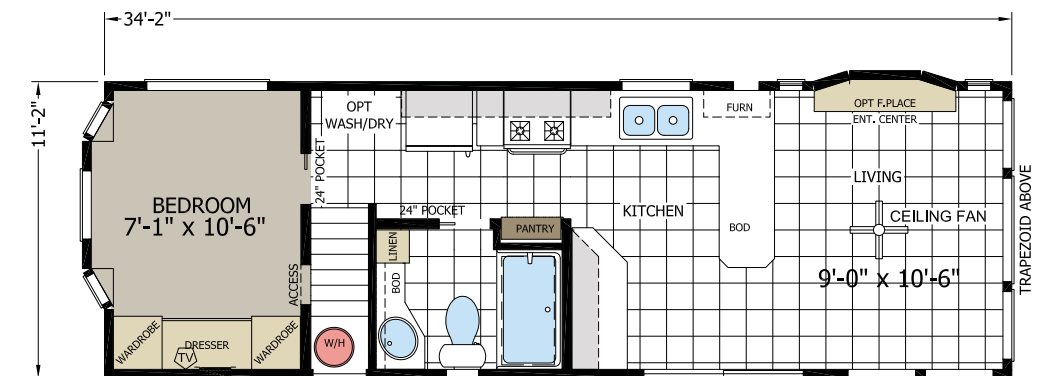
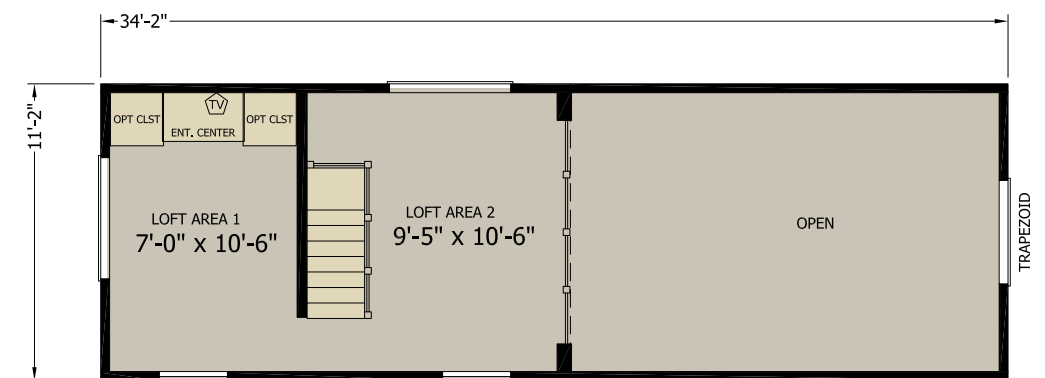
OPT BAY FRONT



Model 522 | 11'-2" x 34'-10" | 1 bed-1 bath | 399 sq. ft.



Model 553 | 11'-2" x 34'-2" | 1 bed-1 bath | 399 sq. ft.



Standard Features

CONSTRUCTION FEATURES

10" I-beam w/ 99.5" Spread
12" Front & Rear Overhang
19/32" Floor Decking
2x4 Sidewalls 16" OC
2x6 Floor Joists 16" OC
30-Year Architectural Shingles
6/12 Roof Pitch - 3/4 Clear Story & Front Vault
Fire Extinguisher
House Wrap
Hurricane Straps - 3 Each Side
Nominal Side Eaves
R-11 Floor Insulation
R-11 Wall Insulation
R-22 Ceiling Insulation
Rodent Barrier Bottom Board
Storage Loft w/ Staircase

EXTERIOR

Metal Fascia & Vinyl Soffit Throughout
OSB Wrap Side & End Walls
Vinyl Double Dutch Lap Siding w/ Starter Strip

WINDOWS & DOORS

Low "E" 6/6 Grid Windows - .34 U-Value
3-Window Front End (Per Print)
Low E 6' Patio Door w/ Vertical Blinds
Trapezoid Window - Hitch End

ELECTRICAL

4" LED Can Lights Throughout
50 Amp Service w/ 25' Power Cord
Ceiling Fan w/ Light - Living Room
Exterior GFI Receptacle (1)
Front Porch Light - Sliding Glass Door
Heat Tape Receptacle (1)
Smoke/CO Detectors
TV Jack - Master Bed, LR & Loft Ent Ctrs
Water Heater Shut-Off

PLUMBING & HEATING

20-Gallon Electric Water Heater
Dual Control Thermostat
In-Line Metal Heat Duct Throughout
RV Gas Furnace
Shut-Off Valves Throughout
Toe-Kick Registers Throughout

FLOOR COVERING

LuxFlor™ - All Wet, Dining & Living Areas
Simply Stated™ 16 oz Carpet - Master Bed & Loft Only
Tack Strip Carpet Installation
Tuck & Roll Carpet Edges

INTERIOR

2" Blinds Throughout
24" Pocket Doors / Mortised Doors (Per Print)
2-Panel Doors Throughout
Orange Peel Textured Walls Throughout
Door & Window Trim Throughout - White
Orange Peel Textured Ceiling
Valance Treatment - All Windows
Wood Rods & Shelving Throughout

KITCHEN

6" Stainless Steel Sink
Brushed Nickel Hardware Throughout
Single-Lever Pull-Out Faucet w/ Sprayer

APPLIANCES

18 CF Refrigerator - Black
30" Free-Standing Gas Range - Black
30" Vented Range Hood w/ Light - Black
Microwave Over Range - Black

CABINETS & COUNTERTOPS

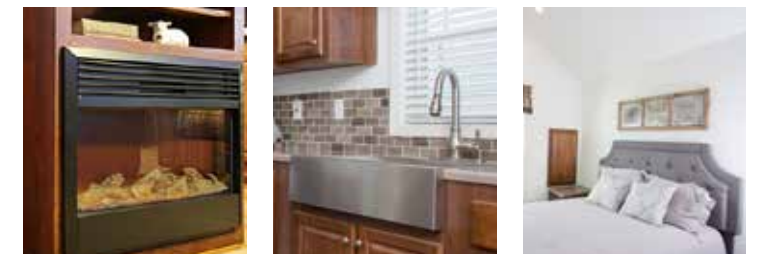
24" Overhead Cabinets
Bank of Drawers - Kitchen (Per Print)
Center Shelves - Base & Overhead
Door & Drawer Knobs Throughout
Ent Ctr & Night Stands w/ Lights (Per Print)
Entertainment Center in Storage Loft
Flip Down Sink Tray - Kitchen
Full Wall Tile - Behind Range Only
Laminate Countertops w/ Square Edge
Lined Base & Overhead Cabinets
Pantry (Per Print)
Mt. Alder Hardwood Cabinets
Refrigerator Overhead Cabinet
Standard 4" Mosaic Tile

BATHROOM

36" Vanity Counter w/ Porcelain Sink
Bank of Drawers (Per Print)
Dual-Lever Sink Faucet
Elongated Toilet
Exhaust Fan
Medicine Cabinet w/ Mirror
54" Fiberglass Tub/Shower
Single-Lever Shower Diverter
Towel Hook & Tissue Holder

FURNITURE

RV Queen Mattress w/ Bedspread & Pillows
RV Queen Platform w/ Storage
RV Sofa Sleeper & End Table
RV Recliner Chair
Drop Leaf Table w/ 2 Chairs





1660 Rowe Ave | Worthington, MN 56187

highlandmanufacturing.com

