

GENERATION TWO STORY

COLLECTION



excel
HOMES



CRAFTSMAN STYLE FOR TODAY'S CASUAL FAMILY

Designed with today's casual family in mind, the Richards home plan offers architectural details that are reminiscent of the Craftsman style. With 2½ baths and 3 bedrooms – including a spacious master with a large walk-in closet – the Richards home plan features a two-car garage and a two-story family room with

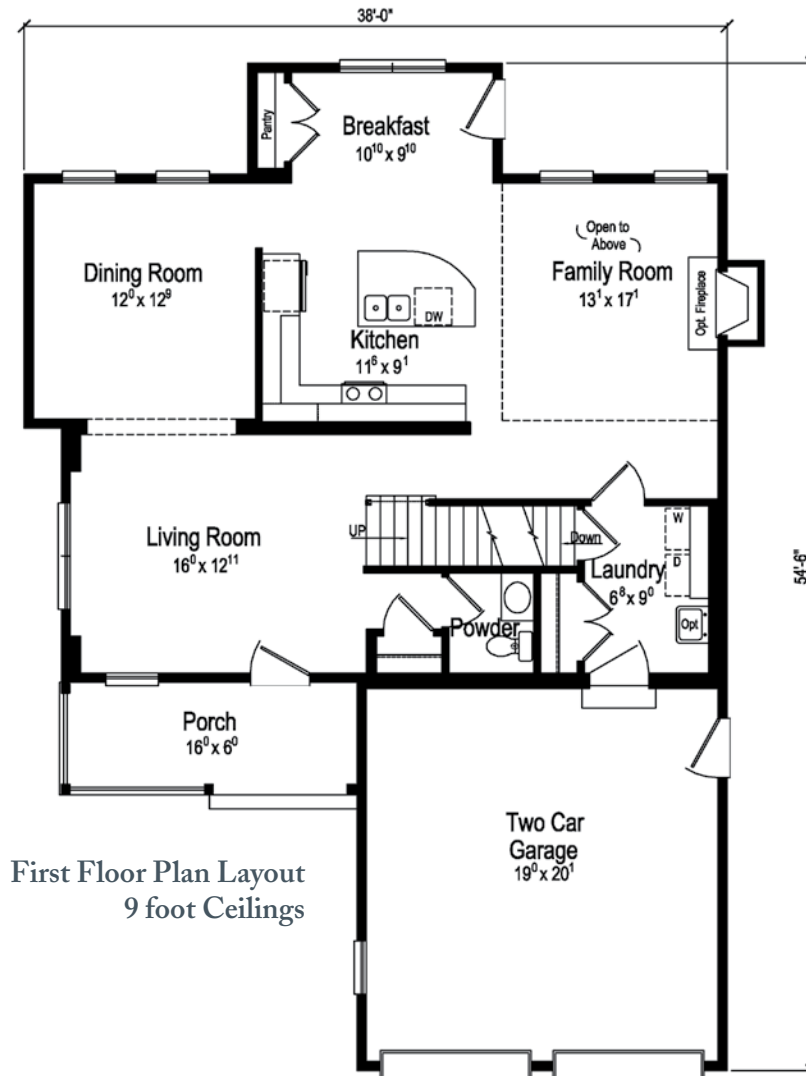
second floor windows and balcony. Enjoy meals informally in the professionally designed eat-in kitchen with a large pantry and oversized center island, or dine in style in the formal dining room. And, of course, Excel Homes offers hundreds of customization options and upgrades to give you the home of your dreams.

PLAN: RICHARDS

1st Floor = 1101

2nd Floor = 1293

Total = 2394 S.F.





See what Excel can do.

SERIES: generation
PLAN: CADET

excelhomes.com



LIVE LARGE WITH A COTTAGE FLAIR

The Cadet home plan provides a much larger appeal than the European cottage style that inspired its design. With a two-car garage, 3 or 4 bedrooms and 2½ baths, the Cadet offers an open great room, professionally designed kitchen with a large eat-at counter and a breakfast area

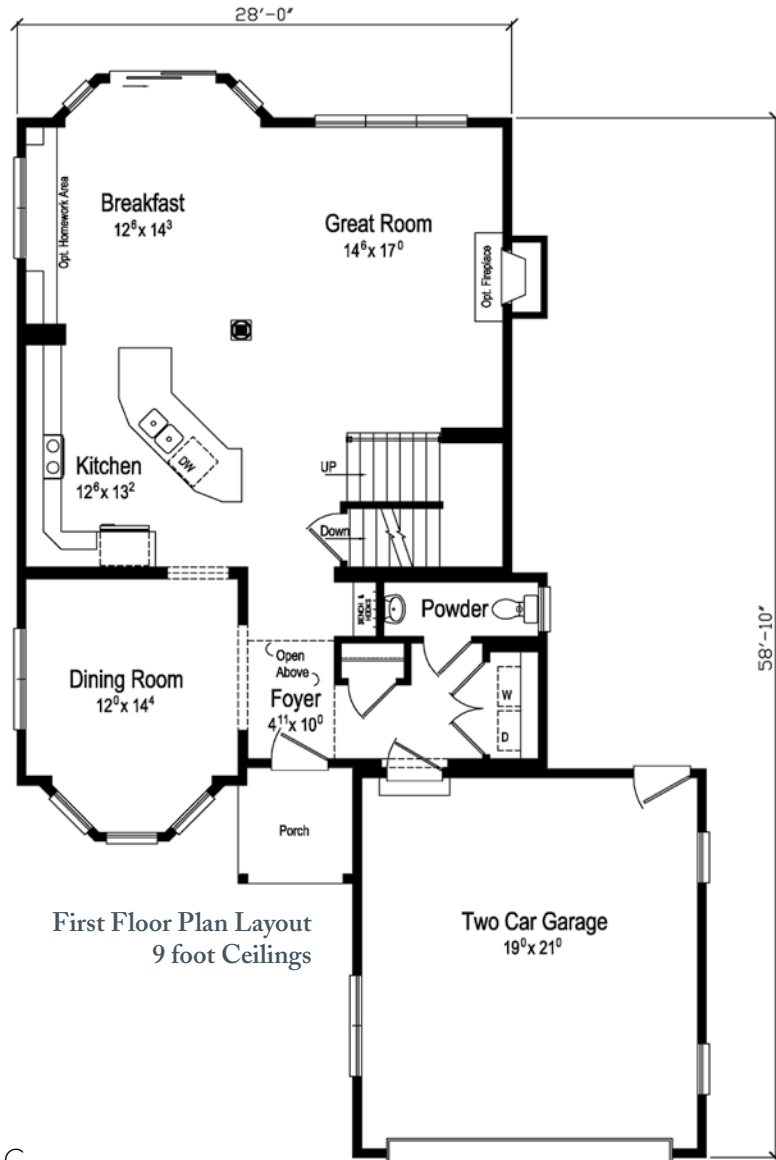
with optional built-in cabinetry. An upstairs balcony overlooks the two-story foyer and the separate dining room can easily be used as a study. And, of course, Excel Homes offers hundreds of customization options and upgrades to give you the home of your dreams.

PLAN: CADET

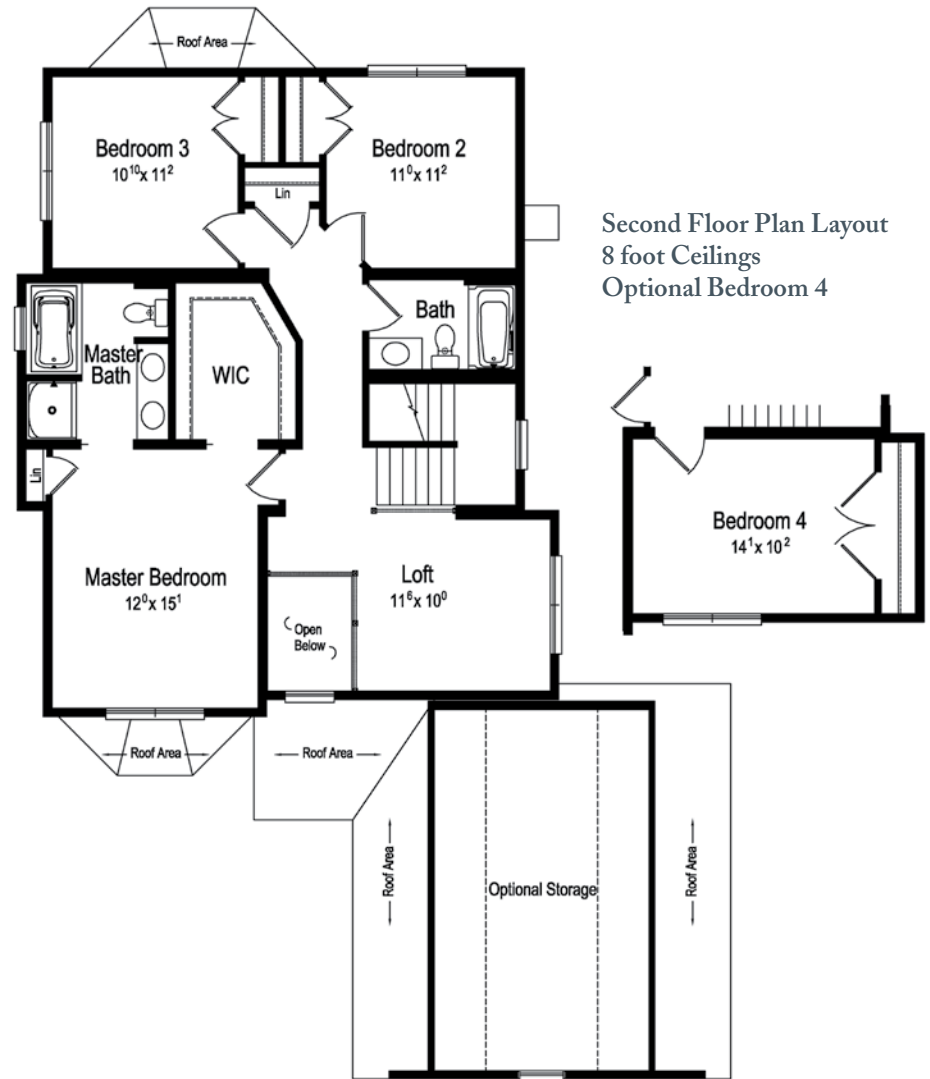
1st Floor = 1112

2nd Floor = 1085

Total = 2197 S.F.



First Floor Plan Layout
9 foot Ceilings



Second Floor Plan Layout
8 foot Ceilings
Optional Bedroom 4





DIVE INTO THE DIVINE DEVLYN

The Devlyn home plan is geared to today's casual lifestyle with solid, quality craftsmanship evident throughout. Featuring 4 bedrooms, including a large master suite, and 3½ baths, this American/Craftsman style home provides an open family room with optional fireplace, two-story foyer, first floor laundry and two-car garage. Amenities include

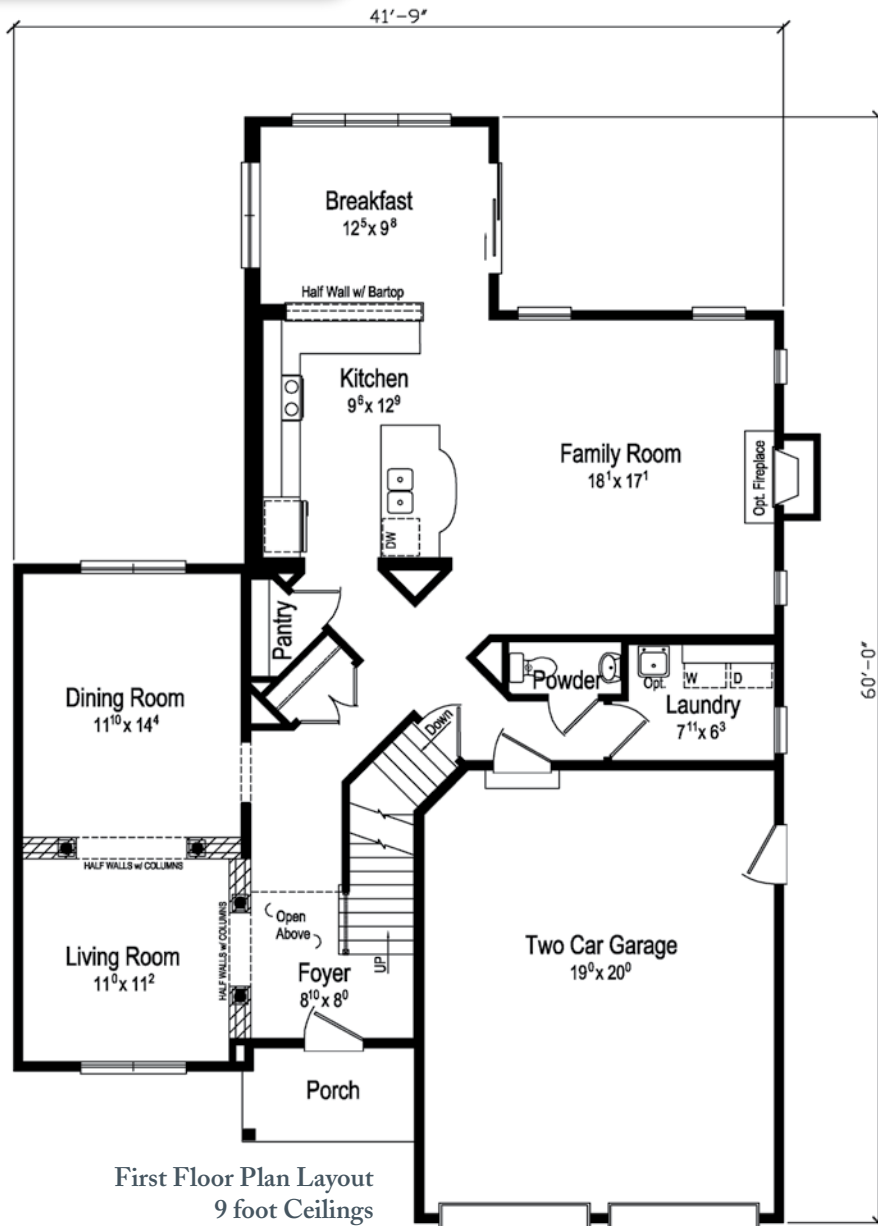
a light-filled breakfast room, separate dining room and living room featuring architectural columns and half walls, and a professionally designed kitchen with separate pantry and oversized center island. And, of course, Excel Homes offers hundreds of customization options and upgrades to give you the home of your dreams.

PLAN: DEVLYN

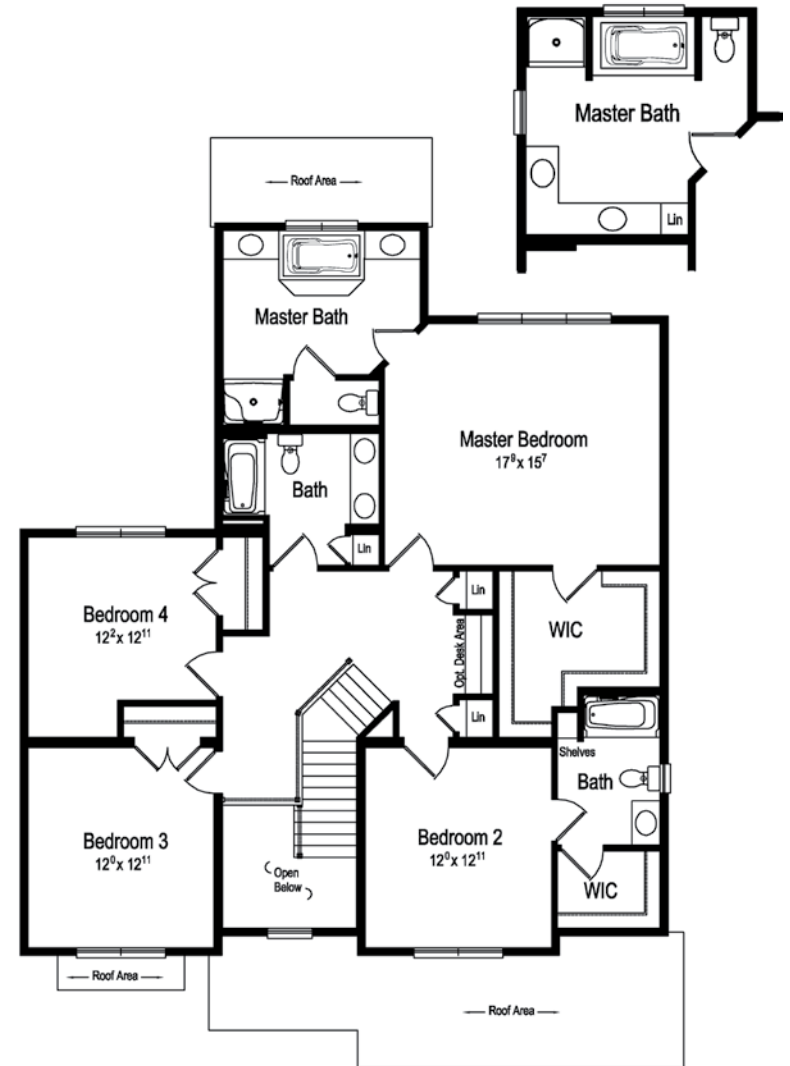
1st Floor = 1380

2nd Floor = 1544

Total = 2924 S.F.



First Floor Plan Layout
9 foot Ceilings



Second Floor Plan Layout
8 foot Ceilings
Optional Master Bath



Excel Homes, LLC.
excelhomes.com



See what Excel can do.



GRACIOUS STYLE WITH ROOM TO PLEASE

The Georgian-style Gracin home plan offers a traditional floor plan with amenities and room to please the entire family. You'll delight in the family room with a two-sided fireplace and built-in shelving, separate first floor study and two-story foyer. A large focal wall of cabinetry graces the professionally designed eat-in kitchen. The first

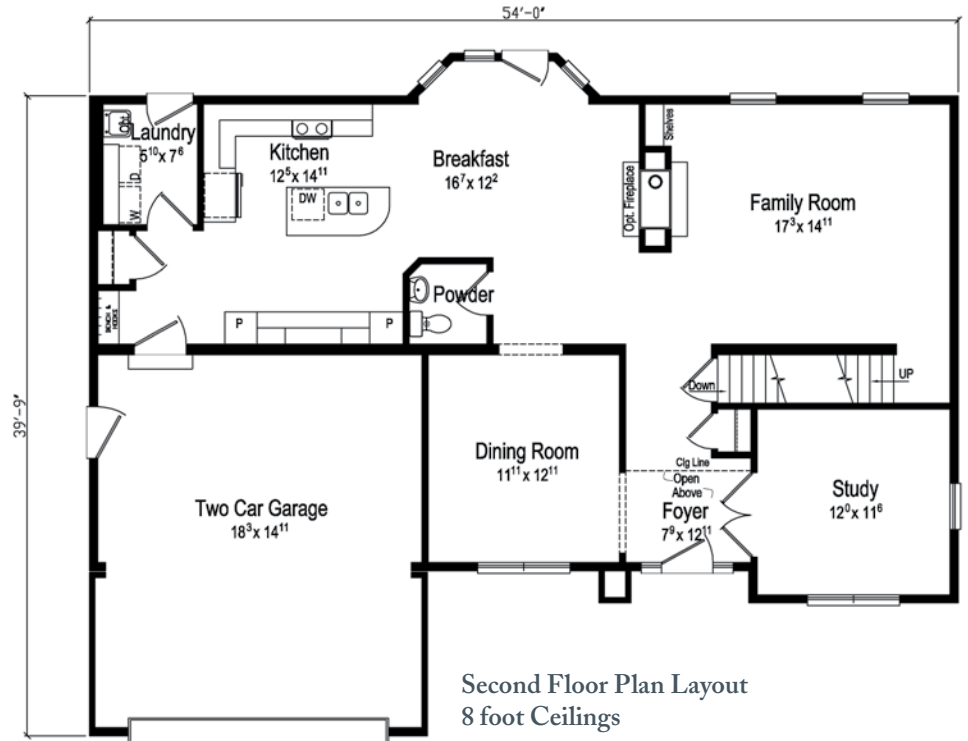
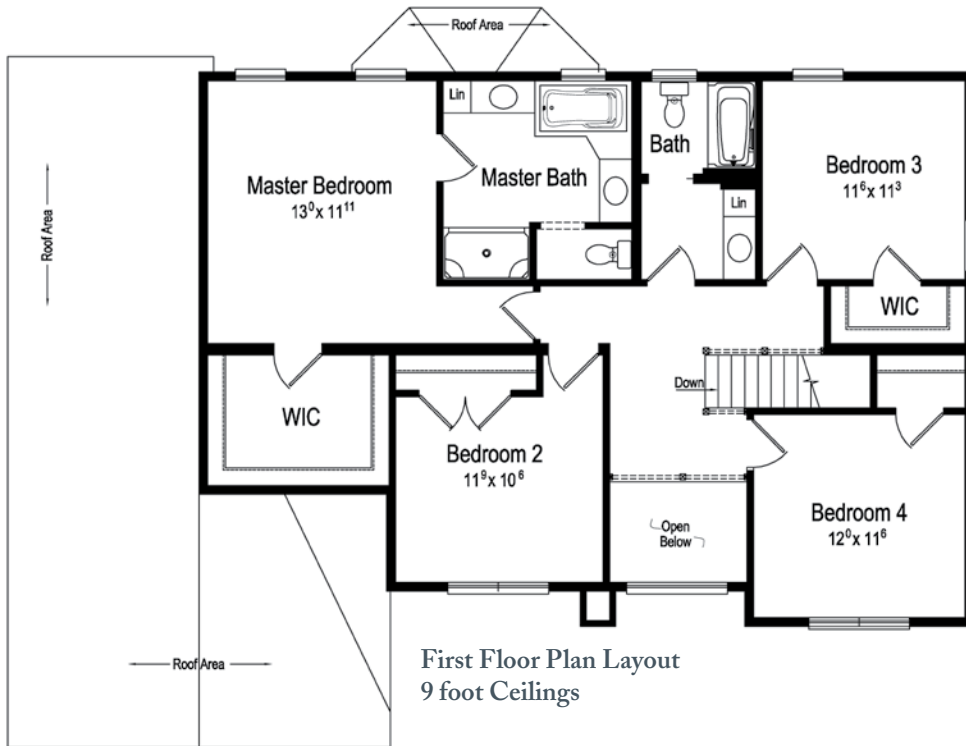
floor laundry conveniently features a mudroom area. With a two-car garage, the Gracin is designed with 4 bedrooms and 2½ baths, including a spacious master with a large walk-in closet and master bath. And, of course, Excel Homes offers hundreds of customization options and upgrades to give you the home of your dreams.

PLAN: GRACIN

1st Floor = 1367

2nd Floor = 1267

Total = 2634 S.F.



Excel Homes, LLC.
excelhomes.com

excel
HOMES

See what Excel can do.



SPACIOUS COMFORT IN GEORGIAN STYLE

With its expansive Georgian style, the Hickory home plan offers ample living space and upgrade customization options to suit the most discriminating tastes. Features include a two-car garage, a sizable formal two-story foyer, a separate family room, formal dining room, living room and study, and a large professionally

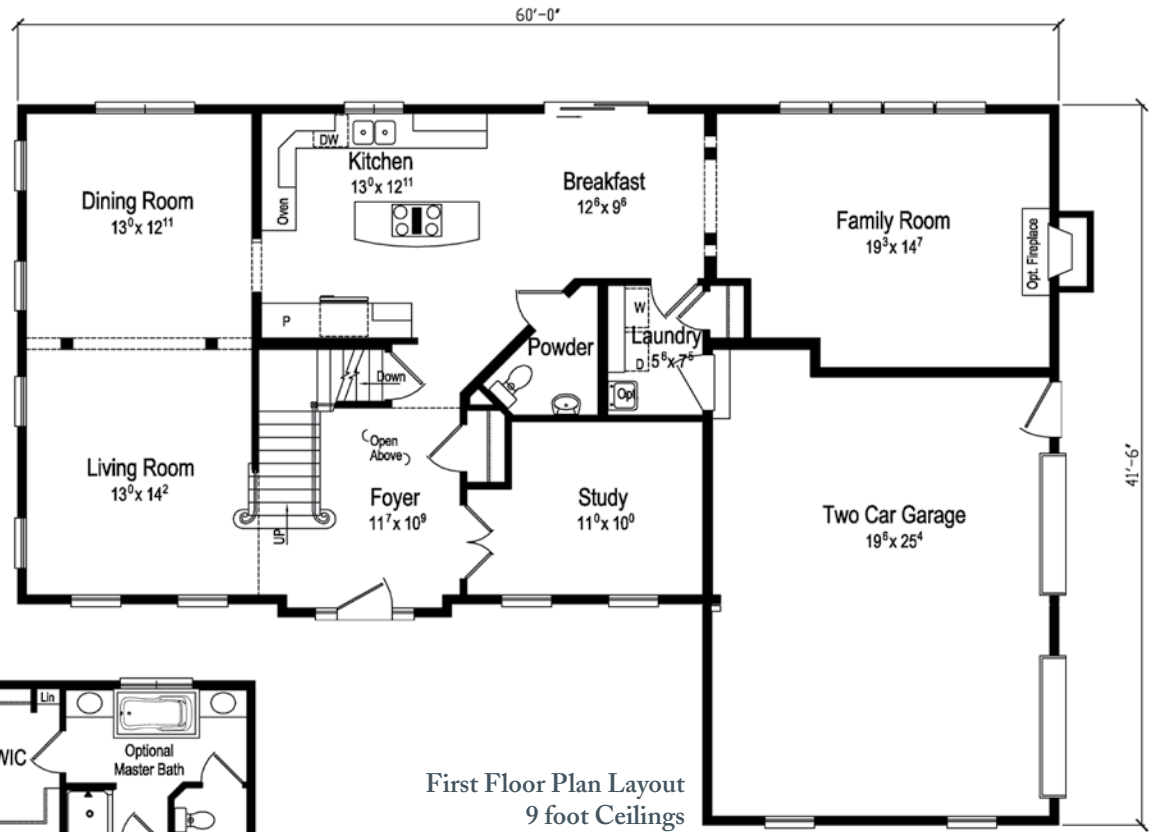
designed kitchen with separate cooktop and wall oven. The spacious floor plan affords 3 bedrooms and 2½ baths, with a large master complete with a separate shower and tub. And, of course, Excel Homes offers hundreds of customization options and upgrades to give you the home of your dreams.

PLAN: **HICKORY**

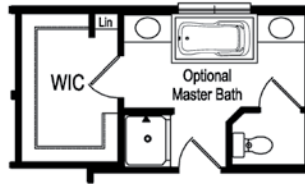
1st Floor = 1462

2nd Floor = 1157

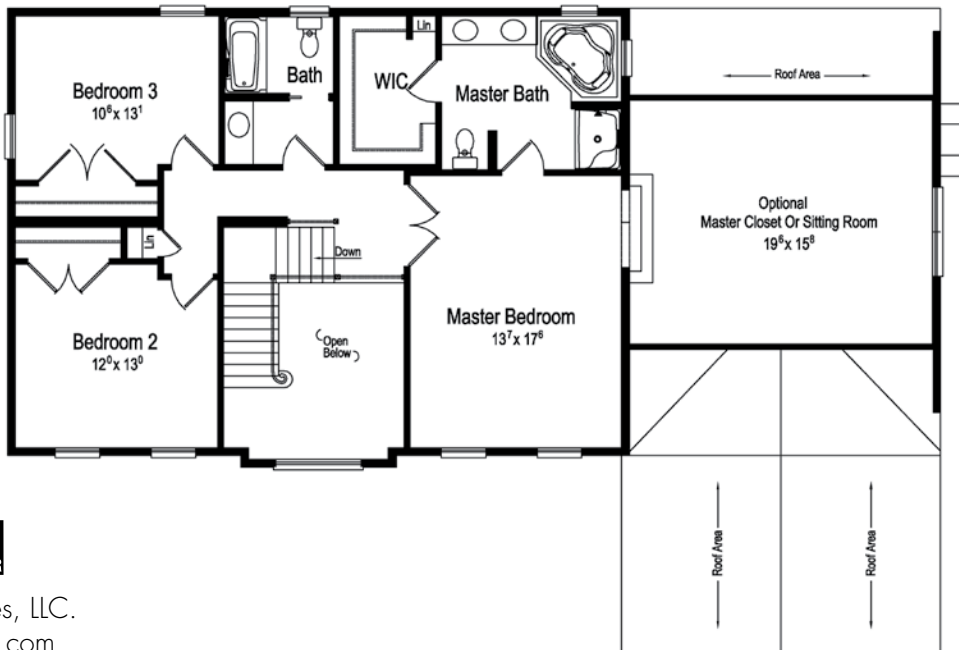
Total = 2619 S.F.



Second Floor Plan Layout
8 foot Ceilings
Optional Master Bath



First Floor Plan Layout
9 foot Ceilings





COASTAL CHARM WITH ROOM TO RELAX

The southern, coastal design of the Sandstone home plan makes it the perfect choice for relaxed seaside or lakeside living. Designed to fit most narrow lots, with the option of moving the two-car garage to the side, the Sandstone features 4 bedrooms, with a first-floor master, and 3½ baths,

including one with “Jack and Jill” amenities. A separate loft/media area is ideal for relaxing. The professionally designed kitchen comes with a separate cooktop and oven. And, of course, Excel Homes offers hundreds of customization options and upgrades to give you the home of your dreams.

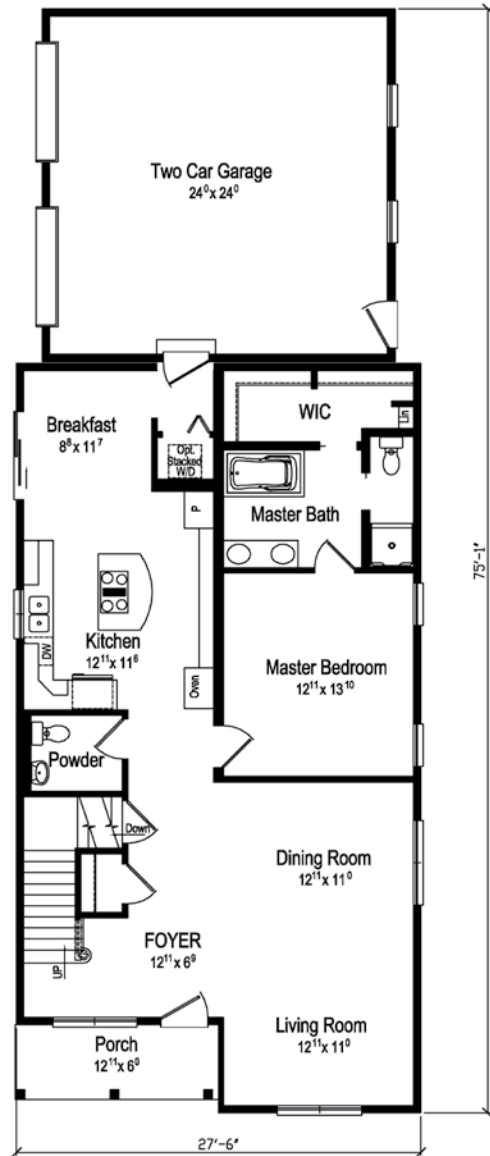
PLAN: SANDSTONE

1st Floor = 1320

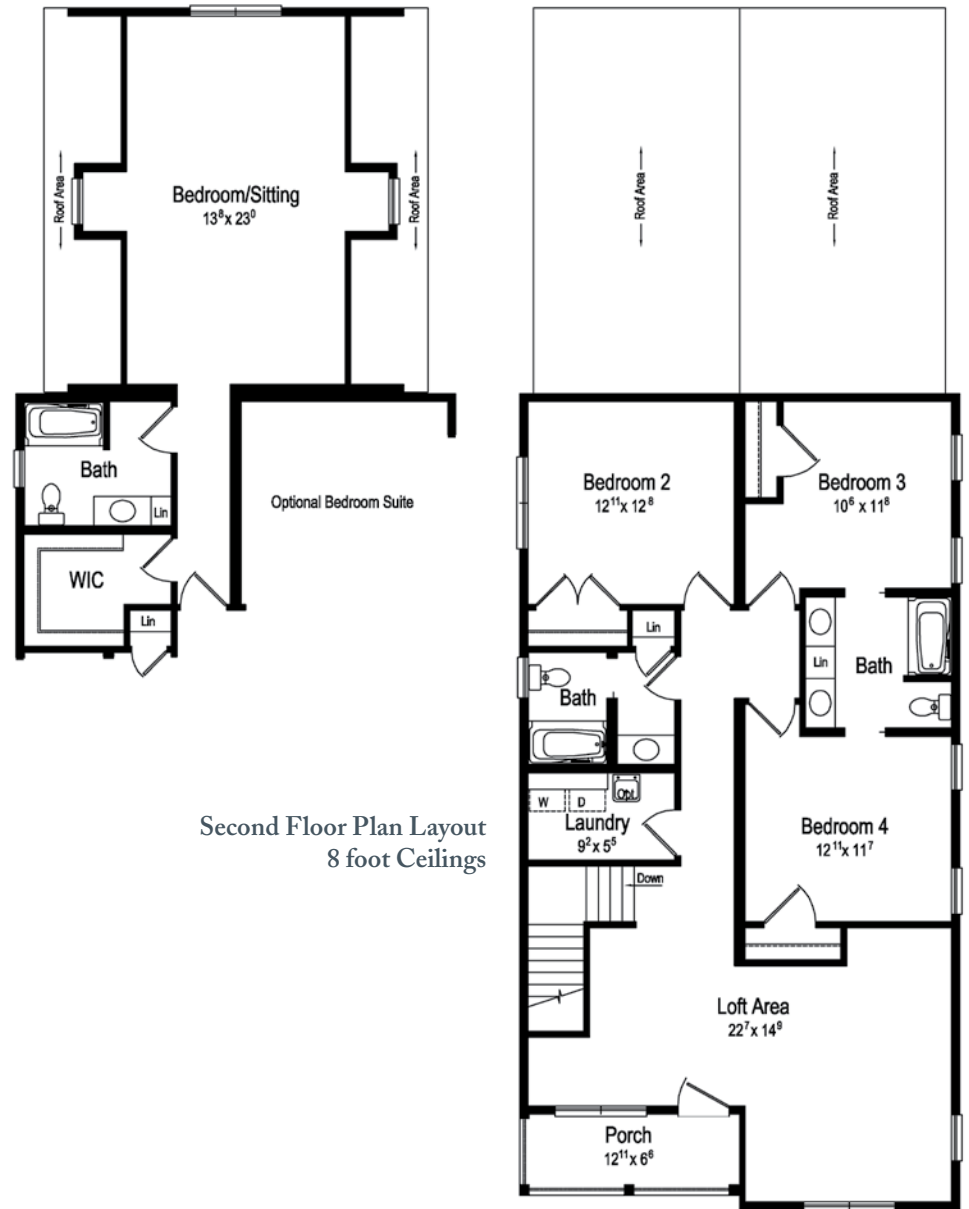
2nd Floor = 1320

Total = 2640 S.F.

First Floor Plan Layout
9 foot Ceilings



Second Floor Plan Layout
8 foot Ceilings





JUST IMAGINE THE VIEWS YOU'LL SEE

Designed to be built on piers, the Coastal-style Seaview home plan can also be built on traditional foundations and fits most narrow lots. The inverted floor plan offers 3 bedrooms and 2½ baths, including a master with separate shower and tub, with the option of 9-foot ceilings on both floors. Expansive rear sliding doors provide perfect access to outdoor enjoyment on porches

and decks. Other amenities include an open great room, a professionally designed kitchen with large pantry and raised breakfast bar, a separate breakfast room and dining room. There's space for parking on the ground level under the home. And, of course, Excel Homes offers hundreds of customization options and upgrades to give you the home of your dreams.

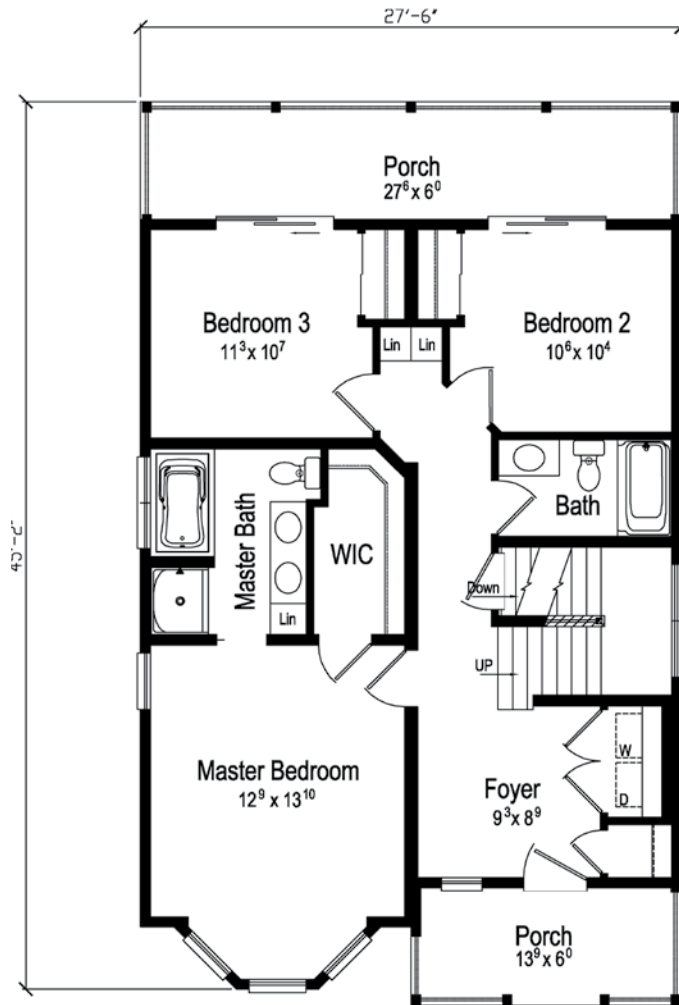
PLAN: SEAVIEW

1st Floor = 986

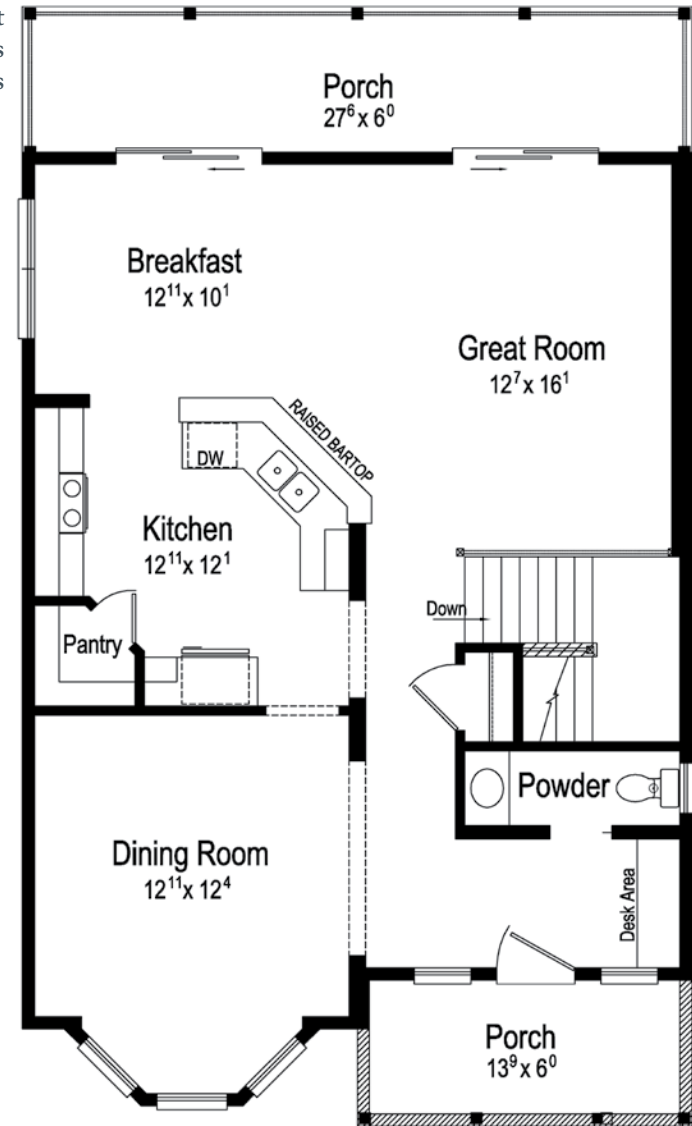
2nd Floor = 986

Total = 1972 S.F.

Second Floor Plan Layout
8 foot Ceilings
Shown with Optional 9 foot Ceilings



First Floor Plan Layout
9 foot Ceilings





OPEN FLOOR PLAN FOR PEOPLE ON THE GO

The stylish comfort of the Stiles home plan makes it an attractive option for today's active family. With 4 bedrooms and 2½ baths, its open floor plan in classic American design provides a two-story foyer with a vaulted ceiling, display shelves and arched entryways. A formal dining room is graced with an arch detailed accent wall, while the first floor study features a bay window.

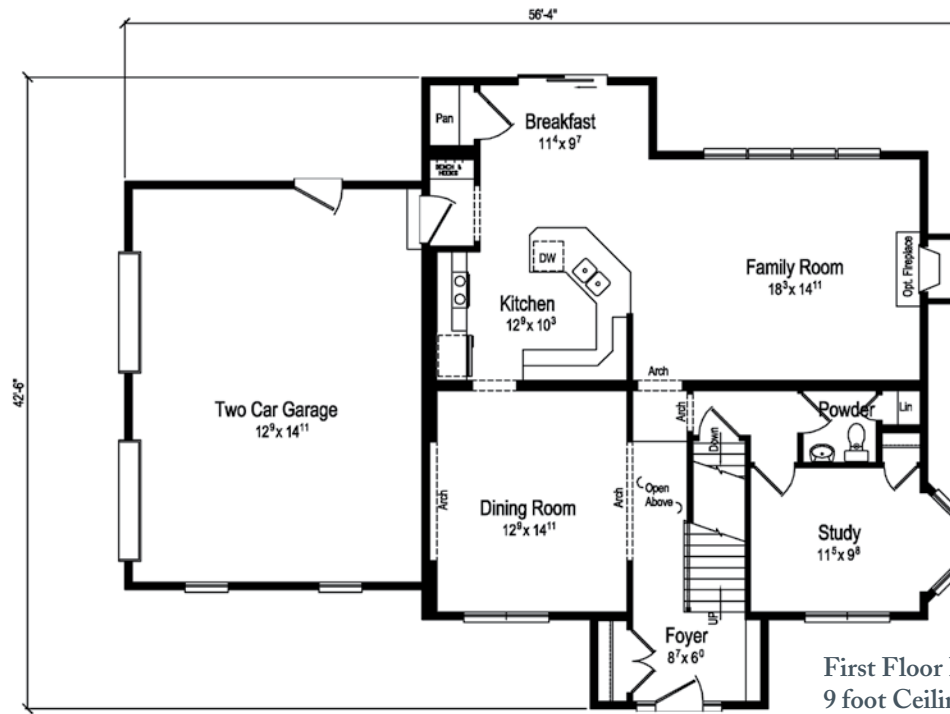
A second floor laundry saves time and the spacious master bedroom offers a sitting area for cozy chats. Rounding out the amenities are a professionally designed eat-in kitchen with pantry and built-in bench with a coat rack at the entry to the two-car garage. And, of course, Excel Homes offers hundreds of customization options and upgrades to give you the home of your dreams.

PLAN: STILES

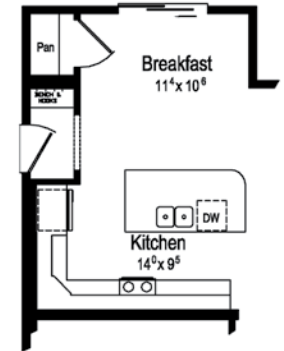
1st Floor = 1235

2nd Floor = 1518

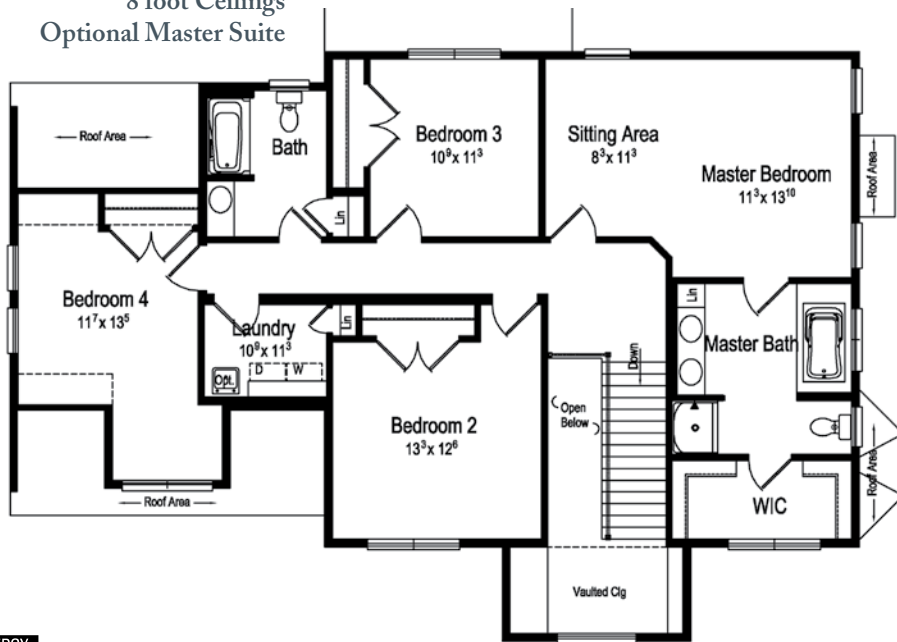
Total = 2753 S.F.



First Floor Plan Layout
9 foot Ceilings
Optional Kitchen



Second Floor Plan Layout
8 foot Ceilings
Optional Master Suite





MAKE YOUR HOME AN AMERICAN CLASSIC

An open family room and separate breakfast room are just two of the classic American touches of the Sycamore home plan. Its 4 bedrooms include a master with his and hers walk-in closets with the option for a master suite with additional bath cabinetry and large walk-in closet. Offering a two-car garage

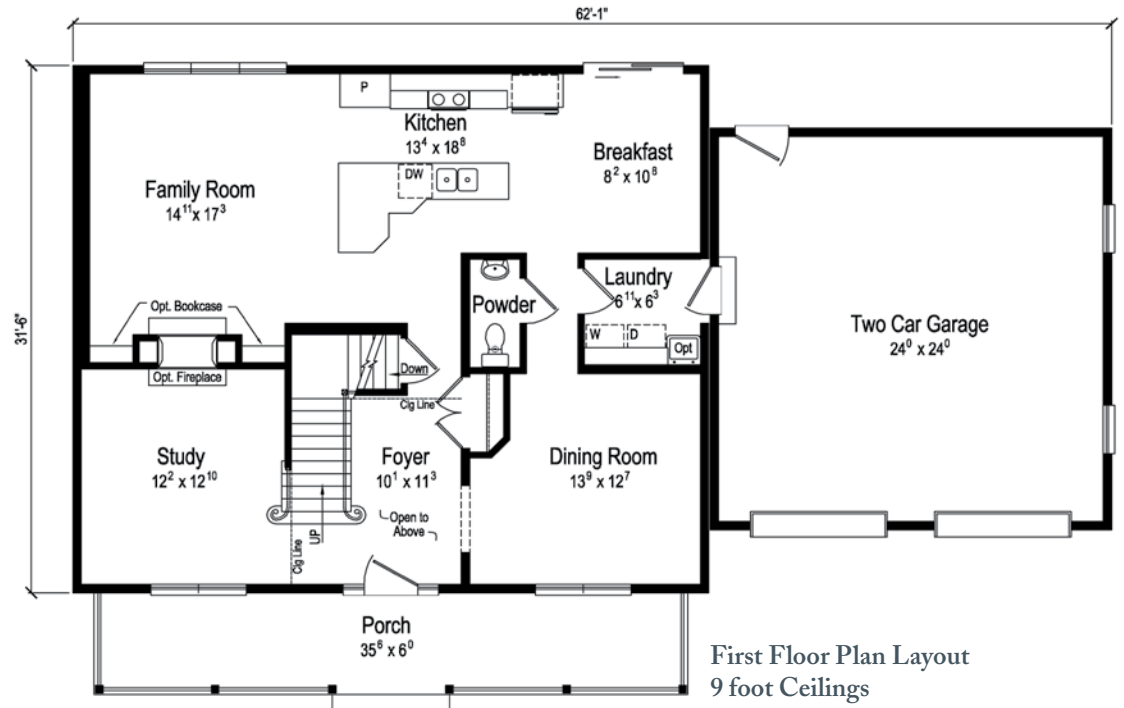
and flexible study/living room space, the Sycamore plan comes with 2½ baths, a two-story foyer and a professionally designed kitchen with pantry and oversized center island. And, of course, Excel Homes offers hundreds of customization options and upgrades to give you the home of your dreams.

PLAN: SYCAMORE

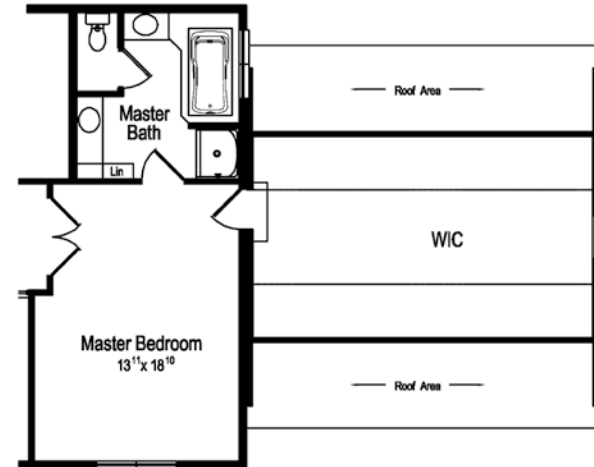
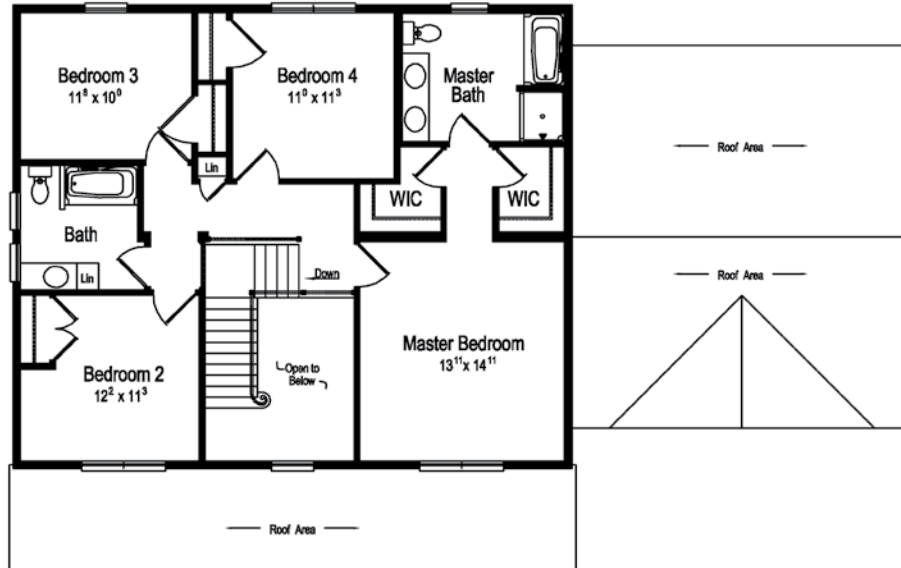
1st Floor = 1197

2nd Floor = 1197

Total = 2394 S.F.



Second Floor Plan Layout
8 foot Ceilings
Optional Master Suite





TIDEWATER HAS ROOM TO ROAM

With its first floor master suite and three large upstairs bedrooms with walk-in closets, the Tidewater is a great family home. Presented in a traditional farmhouse style, it comes with 3½ baths, a separate study with optional fireplace, two-car garage, large

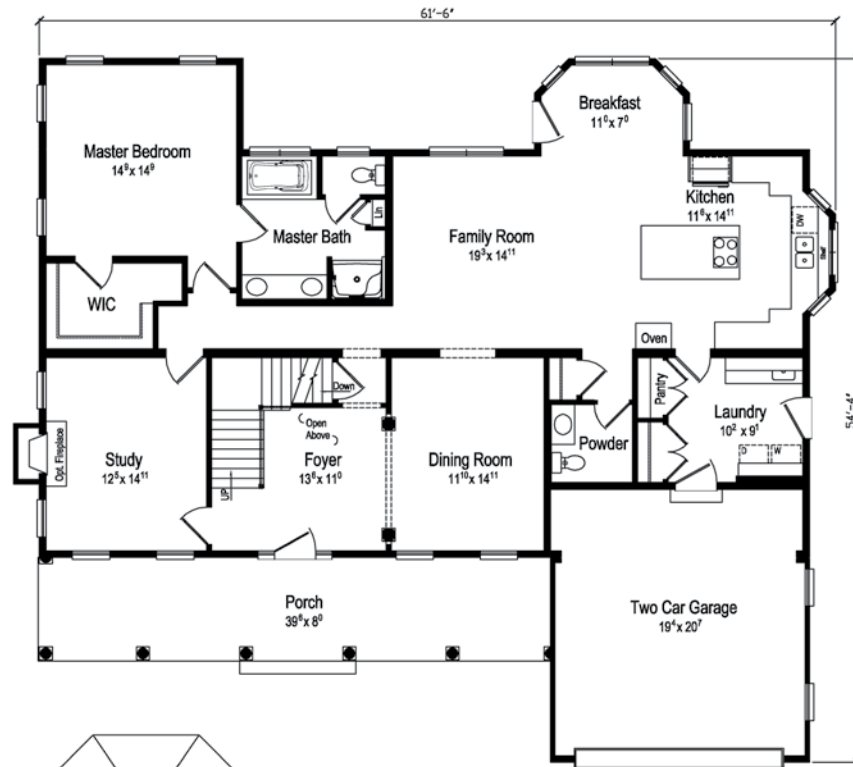
formal dining room and professionally designed eat-in kitchen with oversized center island, separate cooktop and oven, and large storage pantry. And, of course, Excel Homes offers hundreds of customization options and upgrades to give you the home of your dreams.

PLAN: TIDEWATER

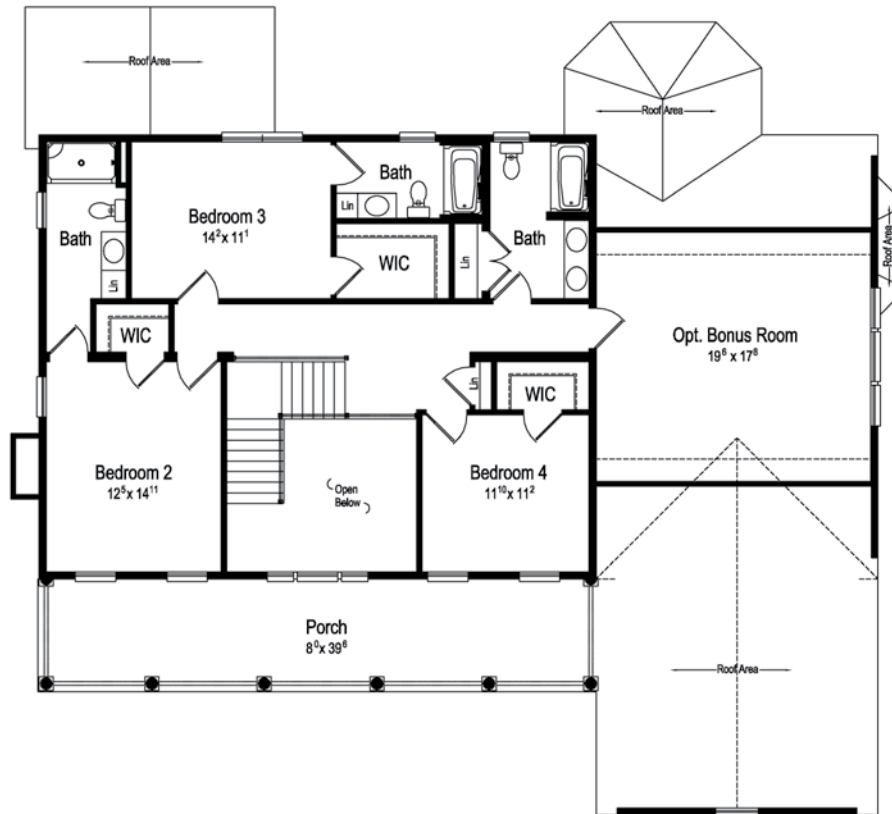
1st Floor = 1989

2nd Floor = 1150

Total = 3139 S.F.



First Floor Plan Layout
9 foot Ceilings
Optional Master Bath



Second Floor Plan Layout
8 foot Ceilings





Excel Homes
10642 Susquehanna Trail
Liverpool, PA 17045
800.521.8599
www.excelhomes.com