



KNOW THE BEAUTY OF INNOVATION

## Fiberglass Door Offering





KNOW THE BEAUTY OF INNOVATION

## about us

### HISTORY

Since 1954, the world-renowned Formosa Plastics Group and one of its leading companies, Nan Ya Plastics Corporation, have offered customers top quality products at the greatest value. While other manufacturers outsource products and components, Plastpro can boast total vertical integration, ensuring everything we do meets our rigorous standards. Our commitment to quality is backed by extensive research and technological developments that ensure consistent innovative products.

### INNOVATIVE RESEARCH AND DEVELOPMENT

Vertical integration means that we can focus on improving each individual door component. By maintaining control over each stage of development, from raw materials to finished product, Plastpro has the power and flexibility to innovate every aspect of our manufacturing and products. Plastpro's breakthrough products, offer the widest possible choice of designs, colors, and sizes. Over the past 10 years, Plastpro has introduced HydroShield Technology™, BTHP™ Snap-On Frames, and our versatile line of composite PF™ Door Frames.

### CRAFTSMANSHIP

Old world craftsmanship meets new world technology to make Plastpro Fiberglass Entry Doors the most advanced products available on the market today. Since 1994, Plastpro has been a market leader gained through the development of our exclusive Hydroshield Technology™. With the introduction of a full line of PF™ Door Frames and Accessories, Plastpro is dedicated to provide the best products on the market today.

### TAKING ACTIVE STEPS TO PROTECT THE ENVIRONMENT

As part of our ongoing commitment to responsible environmental practices, we are proud to be Partners in the U.S. Government's Energy Star Program. As an Energy Star Partner, our products have been shown to meet regional standards for energy efficiency and conservation. Research shows that engineered lumber uses smaller pieces of fast-growing wood to obtain the same sizes as lumber from old-growth forests, but with more durability and strength. As a Built Green member, Plastpro products make a difference for the environment while being a cost effective alternative for our customers.

### BACKED BY WARRANTY

We are proud to offer one of the best warranties in the industry. Plastpro products are held to high standards, supported by our simple promise of quality. We stand behind our products. We guarantee the best quality to meet your performance expectation.

### ISO 9002 & ISO 14000 DESIGNATION

Plastpro products have achieved world recognition through ISO 9001 and ISO 14000 designations for strict adherence to leading international quality standards.

### CHOICES

Plastpro understands the importance of having a home that reflects who you are. That is why we provide the widest range of styles, textures, and sizes found anywhere.



**excel**  
HOMES



KNOW THE BEAUTY OF INNOVATION

## features & benefits



### PATENTED HYDROSHIELD TECHNOLOGY

Our exclusive Hydroshield Technology™ features fiberglass reinforced door skins, full-length composite stiles, and composite top and bottom rails to prevent water infiltration on all six sides.

### FULL LENGTH COMPOSITE TOP AND BOTTOM RAILS:

Non-porous protection keeps water from seeping into the door and helps prevent the build up of mold or mildew.

### FIBERGLASS REINFORCED SKIN:

Fiberglass is unmarred by the wear and tear of everyday use and is unaffected by moisture and humidity. Our doors will not rot, splinter, or warp like wood, and won't dent or delaminate like steel.

### FULL LENGTH COMPOSITE STILES:

All Plastpro fiberglass entry doors feature fully composite stiles to prevent water infiltration into the door's insulation and ensures our door will never warp, rot, or rust.

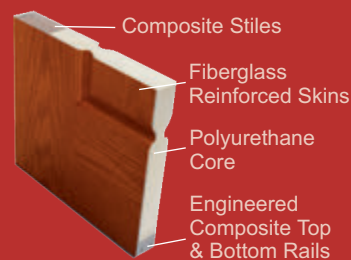
### ARCHITECTURALLY CORRECT PROPORTIONS:

Plastpro doors are designed with beautifully detailed panels that are identical to traditional wood door construction to create crisper shadow lines and heightened curb appeal.

### INSULATED CORE:

Our environmentally friendly insulation is 100% CFC-free and provides a high R-value for maximum thermal protection.

- MOISTURE RESISTANT
- ROT RESISTANT
- INSECT RESISTANT
- TWICE THE SCREW HOLDING POWER OF WOOD
- READY TO PAINT OR STAIN







KNOW THE BEAUTY OF INNOVATION

# features & benefits

## FIBERGLASS ENTRY DOORS

### DOOR SKIN OPTIONS:

Plastpro offers 2 different door skin options, Smooth Skin and Woodgrain.

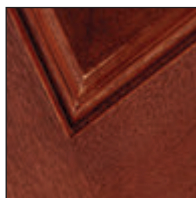
#### Smooth Skin



#### Woodgrains:



Oak



Mahogany



Fir



Rustic

### PF™ FRAMES

While other companies may use a few inches of composite material finger jointed to wood at the bottom of their frames, Plastpro is proud to offer 100% full-length composite frames.



EMBOSSED  
READY TO STAIN



PRIMED  
READY TO PAINT



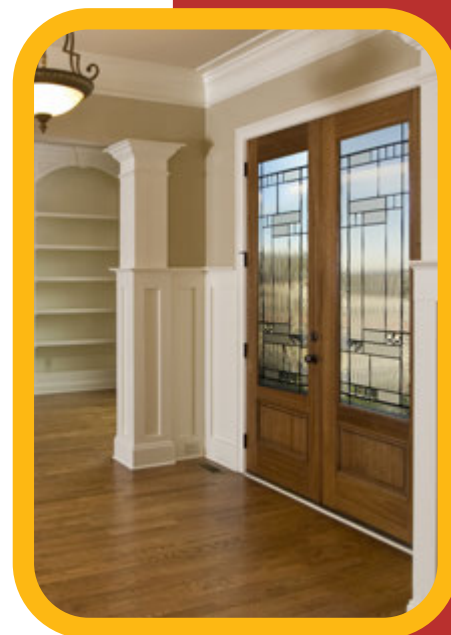
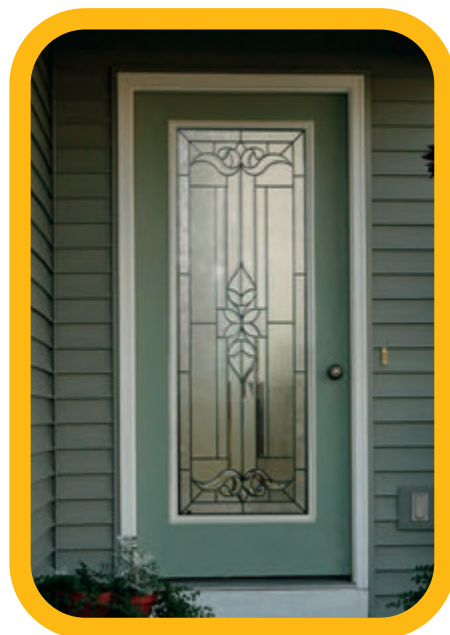
WHITE CAPPED  
NO PAINT REQUIRED



PLASTPRO PFRAME  
\*with HydroShield Technology



WOOD FRAME





KNOW THE BEAUTY OF INNOVATION

excel  
HOMES  
standard

Standard  
Front Door



FS 21

Standard  
Back Door



FS 122

Optional  
Sidelite



FSSL 692GBG

## SMOOTH SKIN SERIES

Plastpro's Smooth Skin doors are a long lasting alternative to steel doors that provide all the benefits of fiberglass. Made with our exclusive Hydroshield Technology™ our Smooth Skin doors will never dent, rust, or delaminate like steel. Made with a pre-pigmented white skin, our doors resist the appearance of scratches. Excel Homes' standard front door offering is the Smooth Skin six panel door and standard back door offering is the Smooth Skin half lite.

Upgrade Options:

### OAK PARK

Patina Caming



FSSL  
819KP



FS 814KP



FSSL  
819KP

### MAJESTIC ELEGANCE

Brass, Nickel & Patina Caming



FSSL  
692ME



FS 684ME



FSSL  
692ME

### BRENTWOOD

Patina & Bright Zinc Caming



FSSL  
694BRE



FS 684BRE



FSSL  
694BRE

### CADENCE

Patina Caming



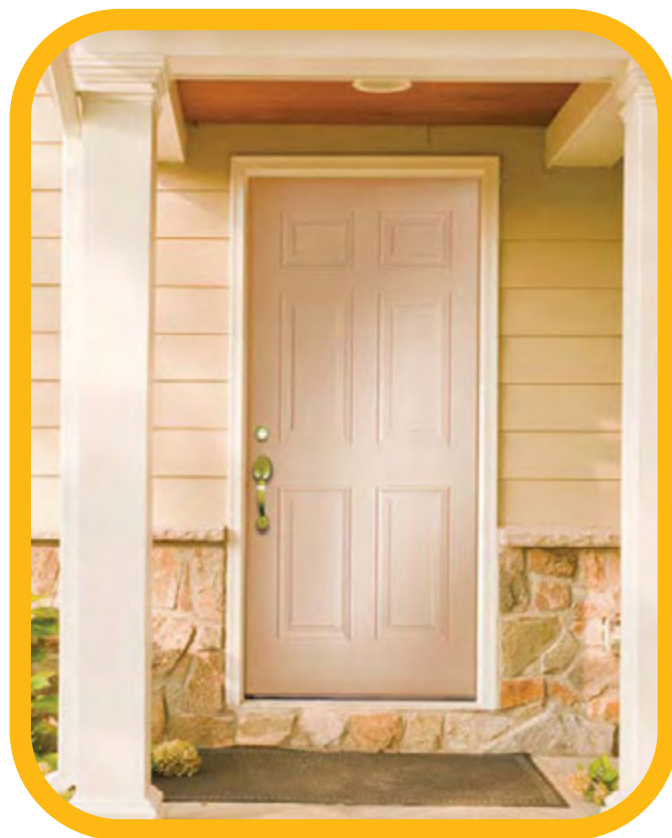
FSSL  
422CD



FS 607CD



FSSL  
422CD





KNOW THE BEAUTY OF INNOVATION

excel  
HOMES  
upgrade

Upgrade  
Front Door



FG 21

Upgrade  
Back Door



FG 122

Upgrade  
Sidelite



FG 692GBG

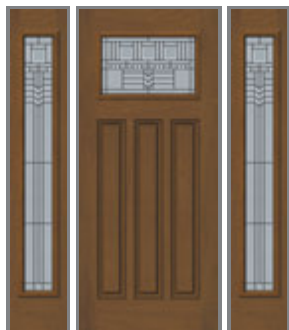
## WOODGRAIN SERIES

Our Woodgrain series doors have a rich woodgrain pattern that resembles the look, feel, and texture of real wood such as oak, mahogany and fir (depending on availability) without any of the problems associated with wood. WoodgrainSeries doors maintain the original look and feel of your home, but with all of the benefits of fiberglass. Made with our exclusive Hydroshield Technology™, our doors will never rot, warp, or crack like wood.

Upgrade Options:

### OAK PARK

Patina Caming



FGSL  
819KP

FG 814KP

FGSL  
819KP

### MAJESTIC ELEGANCE

Brass, Nickel & Patina Caming



FGSL  
692ME

FG 684ME

FGSL  
692ME

### BRENTWOOD

Patina & Bright Zinc Caming



FGSL  
694BRE

FG 684BRE

FGSL  
694BRE

### CADENCE

Patina Caming



FGSL  
422CD

FG 607CD

FGSL  
422CD



Woodgrain doors shown are stained. Stain Kit is an additional purchase. We recommend that Woodgrain doors are stained immediately upon receipt.





KNOW THE BEAUTY OF INNOVATION

excel  
HOMES

DECORATIVE GLASS



Camelia  
Wrought Iron

Privacy Rating - 9



Paris  
Patina Caming

Privacy Rating - 4



Cadence  
Patina Caming

Privacy Rating - 5



Oak Park  
Patina Caming

Privacy Rating - 5

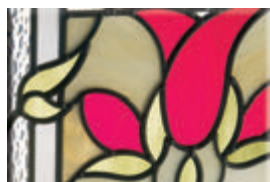


Solstice  
Patina Caming

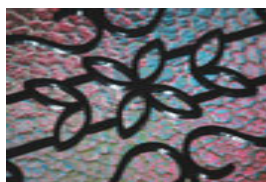
Privacy Rating - 8



Lasting  
Impressions



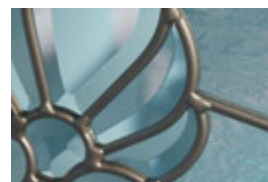
Bellflower  
Patina Caming



Mediterranean  
Wrought Iron



Kensington  
Patina Caming



Heirloom Master  
Brass & Satin Nickel Caming



Brentwood  
Patina & Bright Zinc Caming

Privacy Rating - 8



Madison  
Wrought Iron

Privacy Rating - 9



Prairie Bevel  
Patina Caming

Privacy Rating - 6



Bristol  
Satin Nickel Caming

Privacy Rating - 6



Carrollton  
Patina Caming

Privacy Rating - 7



Master Nouveau  
Brass, Nickel & Patina Caming

Privacy Rating - 6



Majestic Elegance  
Brass, Nickel & Patina Caming

Privacy Rating - 6



Micro Granite  
Textured Glass

Privacy Rating - 9



Decorative glass is available for different door styles. Please see Milliken Millwork's full line of products for more door, sidelites and glass options at: [www.millikenmillwork.com](http://www.millikenmillwork.com)